



System Management Bus (SMBus) Specification

Version 3.2

12 Jan 2022

www.powerSIG.org

© 2022 System Management Interface Forum, Inc. – All Rights Reserved

System Management Bus (SMBus) Specification Version 3.2

This specification is provided “as is” with no warranties whatsoever, whether express, implied or statutory, including but not limited to any warranty of merchantability, non-infringement or fitness for any particular purpose, or any warranty otherwise arising out of any proposal, specification or sample.

In no event will any specification co-owner be liable to any other party for any loss of profits, loss of use, incidental, consequential, indirect or special damages arising out of this specification, whether or not such party had advance notice of the possibility of such damages. Further, no warranty or representation is made or implied relative to freedom from infringement of any third party patents when practicing the specification.

Other product and corporate names may be trademarks of other companies and are used only for explanation and to the owner’s benefit, without intent to infringe.

Revision No.	Date	Notes	Editor
1.0	15 Feb 1995	General Release	Robert Dunstan
1.1	11 Dec 1998	Version 1.1 Release	Robert Dunstan
2.0	3 Aug 2000	Version 2.0 Release	Robert Dunstan
3.0	20 Dec 2014	Version 3.0 Release	Robert V. White Embedded Power Labs
3.1	19 Mar 2018	Version 3.1 Release	Robert V. White Embedded Power Labs
3.2	12 Jan 2022	Version 3.2 Release	Robert V. White Embedded Power Labs

Questions and comments regarding this specification may be forwarded to: techquestions@smiforum.org	For additional information on Smart Battery System Specifications, visit the SBS Implementer’s Forum (SBS-IF) at: www.sbs-forum.org
--	---

System Management Bus (SMBus) Specification Version 3.2

Table of Contents

1.	Introduction	7
1.1	Overview	7
1.2	Audience	7
1.3	Scope	7
1.4	Organization of this document	7
2.	Related Documents And Reference Information	8
2.1	Scope	8
2.2	Applicable Documents	8
2.3	Reference Documents	8
2.4	Definitions Of Terms	9
2.5	Conventions	11
2.5.1	Numeric formats	11
2.5.2	SMBus addresses	11
2.5.3	Transaction protocol diagrams	11
3.	General Characteristics	13
4.	Layer 1 – The Physical Layer	15
4.1	Electrical Characteristics Of SMBus Devices – Two Discrete Worlds	15
4.2	SMBus Common AC specifications	16
4.2.1	General timing conditions	16
4.2.2	Device timeout definitions and conditions	17
4.2.3	Controller device clock extension definitions and conditions	21
4.2.4	Target device clock extension	21
4.2.5	SMBDAT low timeout	22
4.3	DC Specifications	22
4.3.1	Supply voltage requirements	22
4.3.2	SMBus branch circuit model	23
4.3.3	Low Power DC parameters	24
4.3.4	High Power DC specifications	24
4.3.5	Additional common Low and High Power specifications	26
5.	Layer 2 – The Data Link Layer	27
5.1	Bit Transfers	27
5.1.1	Data validity	27
5.1.2	START and STOP conditions	27
5.1.3	Bus idle condition	28
5.2	Data Transfers On SMBus	28
5.3	Clock Generation And Arbitration	29
5.3.1	Synchronization	29
5.3.2	Arbitration	30
5.3.3	Clock low extending	31
5.4	Data Transfer Formats	33
6.	Layer 3 – Network layer	33
6.1	Usage Model	33
6.1.1	Controller devices	33
6.1.2	Target devices	34
6.1.3	Host	34
6.2	Device Identification – Target Address	34

System Management Bus (SMBus) Specification Version 3.2

6.2.1	Uniqueness required	34
6.2.2	SMBus address types	34
6.3	Using A Device	36
6.4	Packet Error Checking.....	36
6.4.1	Packet error checking implementation	36
6.5	Bus Protocols.....	38
6.5.1	Quick Command.....	38
6.5.2	Send Byte	38
6.5.3	Receive Byte	39
6.5.4	Write Byte/Word	39
6.5.5	Read Byte/Word	40
6.5.6	Process Call	41
6.5.7	Block Write/Read.....	42
6.5.8	Block Write-Block Read Process Call	43
6.5.9	SMBus Host Notify protocol	44
6.5.10	Write 32 protocol	44
6.5.11	Read 32 protocol	45
6.5.12	Write 64 protocol	46
6.5.13	Read 64 protocol	47
6.6	SMBus Address Resolution Protocol	48
6.6.1	Unique Device Identifier (UDID).....	48
6.6.2	Power-on reset	52
6.6.3	ARP commands	53
Appendix A.	Optional SMBus signals	71
A.1	SMBSUS#.....	71
A.2	SMBALERT#	72
Appendix B.	Differences between SMBus and I ² C	74
B.1	V _{DD} And Threshold Voltage Differences.....	74
B.2	Minimum Bus Speed And Maximum Clock Stretching	74
B.3	Address Acknowledge	74
B.4	SMBus Protocols	75
B.5	REPEATED START Condition	75
B.6	SMBus Low Power Version	75
B.7	Tables Of Differences	75
Appendix C.	SMBus Device Address Assignments	80
Appendix D.	Change History.....	82
D.1	Revision 3.2	82
D.2	Changes In Revision 3.1	83
D.3	New In Revision 3.1: Default Target Address	83
D.4	Changes From Revision 2.0 To Revision 3.0.....	84
D.4.1	Maximum Bus Frequency	85
D.4.2	Electrical Drive Levels	85
D.4.3	Data Hold Time	85
D.4.4	T _{SPIKE} In Place Of V _{NOISE}	85
D.4.5	Zone Read And Write Protocols.....	86
D.4.6	255 Bytes in Process Call	86
D.4.7	32 And 64 Bit Protocols.....	86
D.4.8	Reformatting Of Text, Figures, And Tables	86

System Management Bus (SMBus) Specification Version 3.2

Table of Tables

Table 1: Transaction protocol diagram symbols and elements	11
Table 2: SMBus AC specifications	18
Table 3: Low Power SMBus DC specification.....	24
Table 4: High Power SMBus DC specification.....	25
Table 5: UDID bit fields descriptions.....	49
Table 6: 8-bit device capabilities field descriptions.....	50
Table 7: Version/Revision bit fields description	50
Table 8: Interface field bit fields description.....	51
Table 9: Internal state of ARP-capable devices on Power-On Reset.....	53
Table 10: ARP command number scheme	53
Table 11: SMBus device characterizations.....	54
Table 12: Device decodes of AV and AR flags.....	65
Table 13: SMBus Suspend parameters.....	71
Table 14: Selected parameter differences between Standard-Mode I ² C and 100 kHz Class SMBus	75
Table 15: DC parameter differences between Fast-mode I ² C and 400 kHz Class SMBus.....	76
Table 16: DC parameter differences between Fast-mode Plus I ² C and 1 MHz Class SMBus	77
Table 17: Reserved and pre-assigned SMBus addresses	80

Table of Figures

Figure 1: Generic transaction diagram.....	13
Figure 2: SMBus Topology.....	14
Figure 3: SMBus pull-up circuitry	15
Figure 4: Example input and output stages of SMBus devices	16
Figure 5: Timeout intervals.....	17
Figure 6: SMBus timing measurements.....	18
Figure 7: Clock extension measurement intervals	21
Figure 8: SMBus branch with multiple devices attached.....	23
Figure 9: SMBus circuit model	23
Figure 10: Data validity	27
Figure 11: START and STOP conditions	27
Figure 12: SMBus byte format	28
Figure 13: ACK signaling of SMBus.....	28
Figure 14: NACK signaling on SMBus.....	29
Figure 15: SMBus clock synchronization	30
Figure 16: SMBus arbitration	31
Figure 17: Periodic clock stretching by a target SMBus device.....	32
Figure 18: Random clock stretching.....	33
Figure 19: Data transfer over SMBus	33
Figure 20: Quick Command protocol	38
Figure 21: Send Byte protocol	39
Figure 22: Send Byte protocol with PEC.....	39
Figure 23: Receive Byte protocol	39
Figure 24: Receive Byte protocol with PEC.....	39
Figure 25: Write Byte protocol	39

System Management Bus (SMBus) Specification Version 3.2

Figure 26: Write Word protocol.....	40
Figure 27: Write Byte protocol with PEC	40
Figure 28: Write Word protocol with PEC	40
Figure 29: Read Byte protocol.....	40
Figure 30: Read Byte protocol with PEC	40
Figure 31: Read Word protocol	41
Figure 32: Read Word protocol with PEC.....	41
Figure 33: Process Call.....	41
Figure 34: Process Call with PEC.....	41
Figure 35: Block Write	42
Figure 36: Block Write with PEC.....	42
Figure 37: Block Read.....	42
Figure 38: Block Read with PEC	42
Figure 39: Block Write - Block Read Process Call.....	43
Figure 40: Block Write - Block Read Process Call with PEC	44
Figure 41: 7-bit Addressable Device to Host Communication	44
Figure 42: Write 32 Protocol	45
Figure 43: Write 32 Protocol With PEC.....	45
Figure 44: Read 32 Protocol	45
Figure 45: Read 32 Protocol With PEC	46
Figure 46: Write 64 Protocol	46
Figure 47: Write 64 Protocol With PEC.....	47
Figure 48: Read 64 Protocol	47
Figure 49: Read 64 Protocol With PEC	48
Figure 50: UDID	48
Figure 51: 8-bit device capabilities field	49
Figure 52: Version/Revision field	50
Figure 53: Interface field	51
Figure 54: Prepare to ARP command.....	54
Figure 55: Reset device command	55
Figure 56: Get UDID (general) command.....	56
Figure 57: Assign address command	57
Figure 58: Get UDID (directed) command.....	58
Figure 59: Reset device ARP (directed) command	58
Figure 60: Notify ARP Controller command	59
Figure 61: ARP Controller behavior flow diagram.....	62
Figure 62: ARP-capable device behavior	66
Figure 63: SMBus during suspend.....	71
Figure 64: Using SMBus to Resume from Suspend	72
Figure 65: A 7-bit-Addressable Device responds to an ARA	73
Figure 66: A 7-bit-Addressable Device responds to an ARA with PEC	73
Figure 67: Data Hold Time.....	85

1. Introduction

1.1 Overview

The System Management Bus (SMBus) is a two-wire interface through which various system component chips and devices can communicate with each other and with the rest of the system. It is based on the principles of operation of the I²C bus. Appendix B provides a description of some of the ways the SMBus characteristics are different from those of the I²C bus.

SMBus provides a control bus for system and power management related tasks. A system may use SMBus to pass messages to and from devices instead of using individual control lines. Removing the individual control lines reduces pin count. Accepting messages ensures future expandability.

With System Management Bus, a device can provide manufacturer information, tell the system what its model/part number is, save its state for a suspend event, report different types of errors, accept control parameters, and return its status.

1.2 Audience

The target audience for this document includes but is not limited to:

- System designers implementing the System Management Bus Specification in their systems
- Digital IC design engineers designing chips to connect to the System Management Bus
- Software engineers writing support code for System Management Bus chips

1.3 Scope

This document describes the electrical characteristics, network control conventions and communications protocols used by SMBus devices. These can be thought of as existing at the first three layers of the seven-layer OSI network model, that is, the physical, data link and network layers. Functions normally implemented at higher layers of the OSI model are beyond the scope of this document.

The original purpose of the SMBus was to define the communication link between an intelligent battery, a charger for the battery and a microcontroller that communicates with the rest of the system. However, SMBus can also be used to connect a wide variety of devices including power-related devices, system sensors, inventory EEPROMs, communications devices, and more.

This version of the specification is a superset of previous versions, 1.0, 1.1, and 2.0. The intent is that all devices compliant with these previous versions are compliant with this version. Those features new to SMBus with this version of the specification are optional and are appropriate to the new environments enabled by those features. However, if implemented, these new features must be implemented in a manner compliant with this specification.

1.4 Organization of this document

This document is organized to first give the reader an overview of the SMBus and then to delve deeper into its actual workings. The major technical discussion appears in three sections that treat the various aspects of the SMBus as they would appear in

System Management Bus (SMBus) Specification Version 3.2

the first three layers of the OSI reference network model: the physical layer, the data link layer and the network layer.

The section on the physical layer sets out SMBus electrical characteristics. The section on the data link layer specifies bit transfers, byte data transfers, arbitration, and clock signals. The section on the link layer deals with the general usage model, the concept of addresses in SMBus, the Address Resolution Protocol and the bus data transfer protocol. All aspects of the SMBus proper may be described within the scope of the first three OSI layers.

The SMBus is a multiple attachment bus with no routing capability. Most communication occurs between and involves only two nodes, a controller and a target. Exceptions to this rule occur during and apply to devices that implement the Address Resolution Protocol as well as the Alert Response Address.

Appendixes at the end of this document contain additional information and guides to implementation that the reader may find useful.

2. Related Documents And Reference Information

2.1 Scope

If the requirements of this specification and any of the reference documents are in conflict, this specification shall have precedence unless otherwise stated.

Referenced documents apply only to the extent that they are referenced.

The latest version and all amendments of the referenced documents at the time the device is released to manufacturing apply.

2.2 Applicable Documents

Applicable documents include information that is, by extension, part of this specification.

None in this revision.

2.3 Reference Documents

Reference documents have background or supplementary information to this specification. They do not include requirements or specifications that are considered part of this document.

- [R01] *The I²C-bus Specification And User Manual*, NXP Semiconductors, Revision 6, 4 April 2014
- [R02] *Advanced Configuration and Power Interface Specification*, Hewlett-Packard Corporation, Intel Corporation, Microsoft Corporation, Phoenix Technologies Ltd., and Toshiba Corporation, Revision 5.0a, 13 November 2013
- [R03] *Conventional PCI*, PCI Special Interest Group, Revision 3.0
- [R04] *PCI Express*, PCI Special Interest Group, Revision 3.0
- [R05] *SMBus Control Method Interface Specification*, System Management Interface Forum, Version 1.0, 10 December 1999
- [R06] *PMBus™ Power System Management Protocol Specification Part I – General Requirements, Transport And Electrical Interface*, System Management Interface Forum, Revision 1.3, March 2014

System Management Bus (SMBus) Specification Version 3.2

2.4 Definitions Of Terms

The following terms are defined with respect to this specification and may have other meanings in other contexts. Some of these terms are used throughout the specification while others have meaning only within limited portions.

Term	Definition
Address Resolution Protocol	A protocol by which SMBus devices with assignable addresses on the bus are enumerated and assigned non-conflicting target addresses.
Address Resolved flag (AR)	A flag bit or state internal to a device that indicates whether or not the device's target address has been resolved by the ARP Controller.
Address Valid flag (AV)	A flag bit or state internal to a device that indicates whether or not the device's target address is valid. This bit must be non-volatile for devices that support the Persistent Target Address.
Alert Response Address (ARA)	A broadcast address used by the system controller or Host as part of the Alert Response Protocol initiated when a device asserts the SMBALERT# signal.
ARP	Address Resolution Protocol
ARP Controller	The SMBus controller (hardware, software or a combination) responsible for executing the ARP and assigning addresses to ARP-capable target devices. The SMBus Host will usually be the ARP Controller but under some circumstances another SMBus controller may assume the role. There is only one active ARP Controller at any time.
Assigned Target Address	The address assigned to a target device by the ARP Controller. This address is then used for accesses to the device's core function. Legal values are in the range 0010 000b to 1111 110b with some exceptions (associated with reserved addresses and those consumed by Fixed Target Address devices).
Bus Controller	Any device that initiates SMBus transactions and drives the clock.
Bus Target	Target of a SMBus transaction which is driven by some controller.
Controller, Controller-receiver, Controller-transmitter	See Section 6.1.1.
Default Target Address	A manufacturer-assigned, read-only target address that is loaded from ROM after the device power on.
DTA	Default Target Address
Fixed Target Address	A target address that cannot be changed. Non-ARP-capable SMBus devices fall into this category. The ARP Controller must not assign a used (i.e. device is present on the bus) Fixed Target Address to an ARP-capable device.
FTA	Fixed Target Address
Host	See Section 6.1.3.
LSB	Least Significant Bit (See MSB)

System Management Bus (SMBus) Specification Version 3.2

Term	Definition
MSB	Most Significant Bit (See LSB)
PEC	Packet Error Code
Persistent Target Address	An assigned target address that is retained through loss of device power.
PTA	Persistent target address
REPEATED START	A REPEATED START is a START condition on the SMBus used to switch from write mode to read mode in a combined format protocol (e.g. Byte Read). The repeated START always follows an Acknowledge, and it always indicates that an address phase is beginning.
Reserved	Reserved fields and bits within any of the data structures in this document and in the SMBus ARP data structures in particular are expected to be unused and ignored by software. Reserved bits must be written as 0 and read as 0 unless otherwise specified. These bits and fields are reserved for future use and may not be used by OEMs or IHVs.
Self-powered device	A self-powered device is a device powered either by a battery or an external power source, but not by the system of which it is a part and not in any way by the SMBus.
SMBALERT#	An optional signal that a SMBus device can use to notify a controller that the SMBus device has information for the controller.
SMBus ARP Enumerator	A SMBus controller that uses a subset of the ARP for the purpose of discovering ARP-capable target devices and their assigned target addresses.
START	The condition a controller uses to signal the devices on the SMBus that a transaction is beginning. A START condition is generated by the controller by driving SMBDAT low while SMBCLK is high
STOP	The condition a controller uses to signal the devices on the SMBus that a transaction is ending. A STOP condition is generated by the controller by allowing SMBDAT to go high while SMBCLK is already high
Target, Target-receiver, Target-transmitter	See Section 6.1.2.
Used Address Pool	<p>The list of target addresses known by the ARP Controller that are either:</p> <ul style="list-style-type: none"> • Reserved • Used by non-ARP-capable devices (Fixed Target Addresses) • Already assigned to ARP-capable devices <p>The ARP Controller must not assign addresses from the first two categories to ARP-capable devices.</p>

System Management Bus (SMBus) Specification Version 3.2

2.5 Conventions

2.5.1 Numeric formats

All numbers are decimal unless specifically identified otherwise.

2.5.1.1 Decimal numbers

Numbers explicitly identified as decimal are identified with a suffix of “d”.

2.5.1.2 Binary numbers

Numbers in binary format are indicated by a suffix of “b”. Unless otherwise indicated, all binary numbers are unsigned.

Binary numbers with more than four bits are shown in groups of four bits.

All signed binary numbers are two’s complement.

2.5.1.3 Hexadecimal numbers

Numbers in hexadecimal format are indicated by a suffix of “h”.

Hexadecimal values with more than four digits are shown in groups of four digits.

2.5.1.4 Examples

255d ⇔ FFh ⇔ 1111 1111b

175d ⇔ AFh ⇔ 1010 1111b

16,777,215d ⇔ FF FFFFh ⇔ 1111 1111 1111 1111 1111 1111b

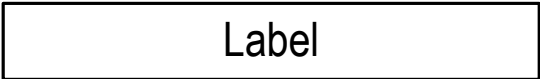
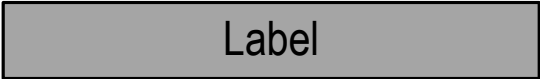
2.5.2 SMBus addresses

Throughout this document, SMBus addresses are given in binary format. SMBus addresses are 7 binary bits long and are conventionally expressed as 4 bits followed by 3 bits followed by the letter ‘b’, for example, 0001 110b. These addresses occupy the high seven bits of an eight-bit field on the bus. The low bit of this field, however, has other semantic meaning that is not part of a SMBus address.

2.5.3 Transaction protocol diagrams

SMBus transaction protocol diagrams illustrate the flow of data on the bus for each type of protocol, such as READ BYTE or WRITE WORD. The elements that are used to construct these diagrams are shown below in Table 1.

Table 1: Transaction protocol diagram symbols and elements

Symbol	Meaning
8 	An unshaded rectangle with a number over it represents one or more bits, as indicated by the number, being sent from the controller to the target. A label may describe the data and may include specific values.
8 	A shaded rectangle with a number over it represents one or more bits, as indicated by the number, being sent from the target to the controller. A label may describe the data and may include specific values.

System Management Bus (SMBus) Specification Version 3.2

	Meaning
7 Address	A seven bit target address being sent from the controller to one or more devices (such as with the General Call Address) on the bus.
7 Address	A seven bit device address being returned to the controller from a target device.
7 Device Address	A seven bit device address being sent to the Host as part of the SMBus Host Notify protocol
7 Device Address	A seven bit device address being returned to the controller in response to the controller reading from the Alert Response Address (ARA)
S	The START condition sent from a controller device.
Sr	A REPEATED START condition sent from a controller device.
P	A STOP condition sent by a controller device
1 Wr	The bit [0] of the address byte indicating the device is being addressed to write data into the device. Bit [0] will have a value of 0.
1 Rd	The bit [0] of the address byte indicating the device is being addressed to read data from the device. Bit [0] will have a value of 1.
1 R/W#	General representation of bit [0] of the address byte.
1 A	An Acknowledge (ACK) bit sent from the controller

System Management Bus (SMBus) Specification Version 3.2

	Meaning
<p style="text-align: center;">1</p> <div style="text-align: center; border: 1px solid black; width: 30px; height: 30px; margin: 0 auto; display: flex; align-items: center; justify-content: center;">N</div>	A Not Acknowledge (NACK) bit sent from the controller
<p style="text-align: center;">1</p> <div style="text-align: center; background-color: #cccccc; border: 1px solid black; width: 30px; height: 30px; margin: 0 auto; display: flex; align-items: center; justify-content: center;">A</div>	An Acknowledge (ACK) bit sent from a target device
<p style="text-align: center;">1</p> <div style="text-align: center; background-color: #cccccc; border: 1px solid black; width: 30px; height: 30px; margin: 0 auto; display: flex; align-items: center; justify-content: center;">N</div>	A Not Acknowledge (NACK) bit sent from a target device
<p style="text-align: center;">1</p> <div style="text-align: center; border: 1px solid black; width: 30px; height: 30px; margin: 0 auto; display: flex; align-items: center; justify-content: center;">X</div>	A “don’t care” bit that may have a value of 0 or 1 being sent from a device that is normally a target device as part of its address byte during a SMBus Host Notify protocol transaction.
<p style="text-align: center;">1</p> <div style="text-align: center; background-color: #cccccc; border: 1px solid black; width: 30px; height: 30px; margin: 0 auto; display: flex; align-items: center; justify-content: center;">X</div>	A “don’t care” bit that may have a value of 0 or 1 sent from the target device to the controller when responding to the Alert Response Address (ARA)

Figure 1 shows an example of a generic SMBus transaction data structure. Note the START and STOP conditions are transitions, not bits, and are shown without a bit count number above the symbol. When shown in a transaction diagram, the REPEATED START is also a transition, not a bit, and is shown without a bit count above the symbol.

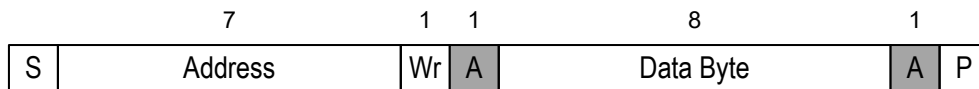


Figure 1: Generic transaction diagram

3. General Characteristics

SMBus is a two-wire bus. Multiple devices, both bus controllers and bus targets, may be connected to a SMBus segment. Generally, a bus controller device initiates a bus transfer between it and a single bus target and provides the clock signals. One exception to this rule, detailed later, is during initial bus setup when a single controller may initiate transactions with multiple targets simultaneously. Another exception is during a ZONE WRITE when a controller may be sending data to multiple targets simultaneously. A bus target device can receive data provided by the controller or it can provide data to the controller.

Only one device may control the bus at any time. Since more than one device may attempt to take control of the bus as a controller, SMBus provides an arbitration mechanism that relies on the wired-AND connection of all SMBus device interfaces to the SMBus.

System Management Bus (SMBus) Specification Version 3.2

This specification defines two classes of electrical characteristics, Low Power and High Power. The first class, originally defined in the SMBus 1.0 and 1.1 specifications, was designed primarily with Smart Batteries in mind, but could be used with other Low Power devices. Version 2.0 of the specification introduced an alternative higher power set of electrical characteristics. This class is appropriate for use when higher drive capability is required, for example with SMBus devices on PCI add-in cards and for connecting such cards across the PCI connector between each other and to SMBus devices on the system board.

This version, Version 3.0, of the SMBus specification introduces operation at higher bus speeds (400 kHz and 1 MHz) and adds new data protocols for reading or writing 32 bit and 64 bit values. This version also reduces the minimum nominal V_{DD} from 3 volts to 1.8 volts.

Devices may be powered by the bus V_{DD} or by another power source, V_{BUS} , (as with, for example, Smart Batteries) and will inter-operate as long as they adhere to the SMBus electrical specifications for their class. Figure 2 shows an example implementation of a 5 volt SMBus with devices powered by the bus V_{DD} inter-operating with self-powered devices.

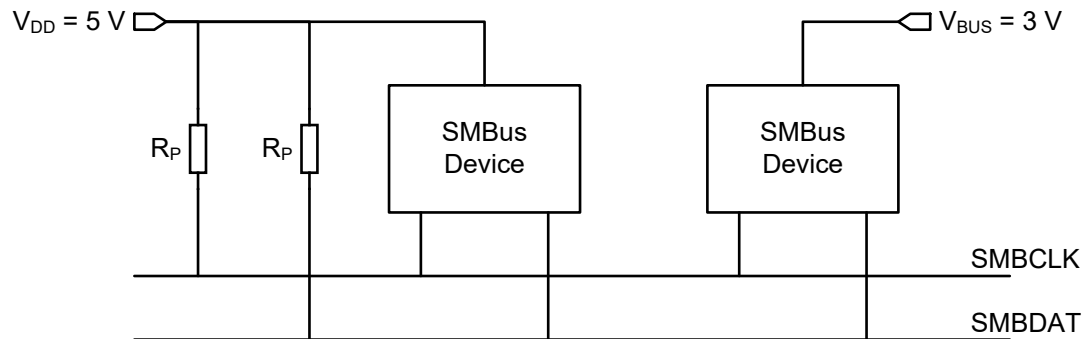


Figure 2: SMBus Topology

V_{DD} may be 1.8 to 5 volts, $\pm 10\%$, and there may be SMBus devices powered directly by the bus V_{DD} . Both SMBCLK and SMBDAT lines are bi-directional, connected to a positive supply voltage through a pull-up resistor or a current source or other similar circuit as shown in Figure 3. When the bus is free, both lines are high. The output stages of the devices connected to the bus must have an open drain or open collector in order to perform the wired-AND function as shown in Figure 4. Care should be taken in the design of both the input and output stages of SMBus devices, in order not to load the bus when their power plane is turned off, i.e. powered-down devices must provide no leakage path to ground.

A device that wants to place a 'zero' on the bus must drive the bus line to the defined logic low voltage level. In order to place a logic 'one' on the bus the device should release the bus line letting it be pulled high by the bus pull-up circuitry.

The bus lines may be pulled high by a pull-up resistor or by a current source. In cases that involve higher bus capacitance, a more sophisticated circuit may be used that can limit the pull-down sink current while also providing enough current during the low-to-high transition to maintain the rise time specifications of the SMBus.

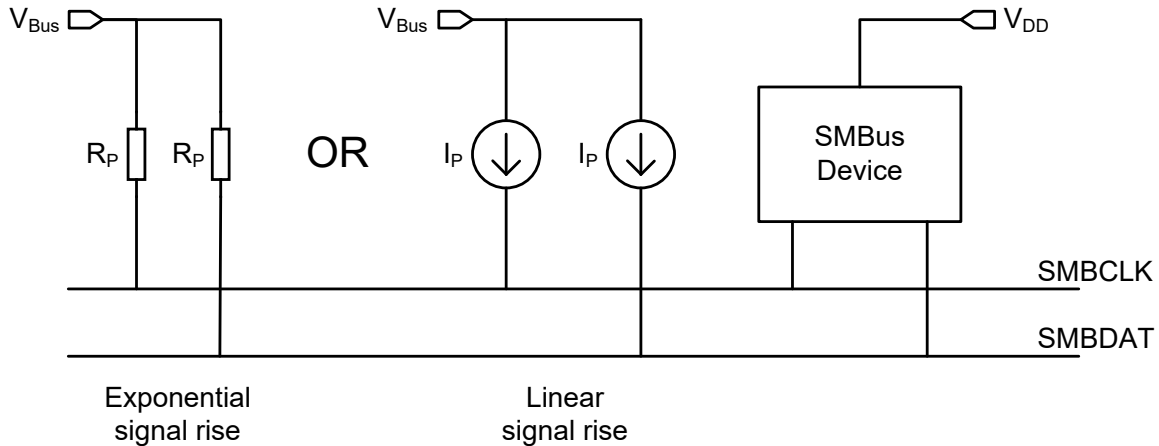


Figure 3: SMBus pull-up circuitry

4. Layer 1 – The Physical Layer

4.1 Electrical Characteristics Of SMBus Devices – Two Discrete Worlds

The SMBus is expected to operate in at least two different mutually exclusive environments that have different electrical requirements. In one case, SMBus must operate reliably in the traditional low-power environment of the battery devices that are at its roots. It must also operate reliably in the higher-noise environment of computers and network equipment with devices that may be on the same board or on a mezzanine card, perhaps connected through a PCI connector. This specification meets these needs by providing two classes of electrical characteristics as called out below. Most of these specifications deal with voltage levels, noise margins, etc. Of course, many specific items, including general ac specifications, are the same in both environments.

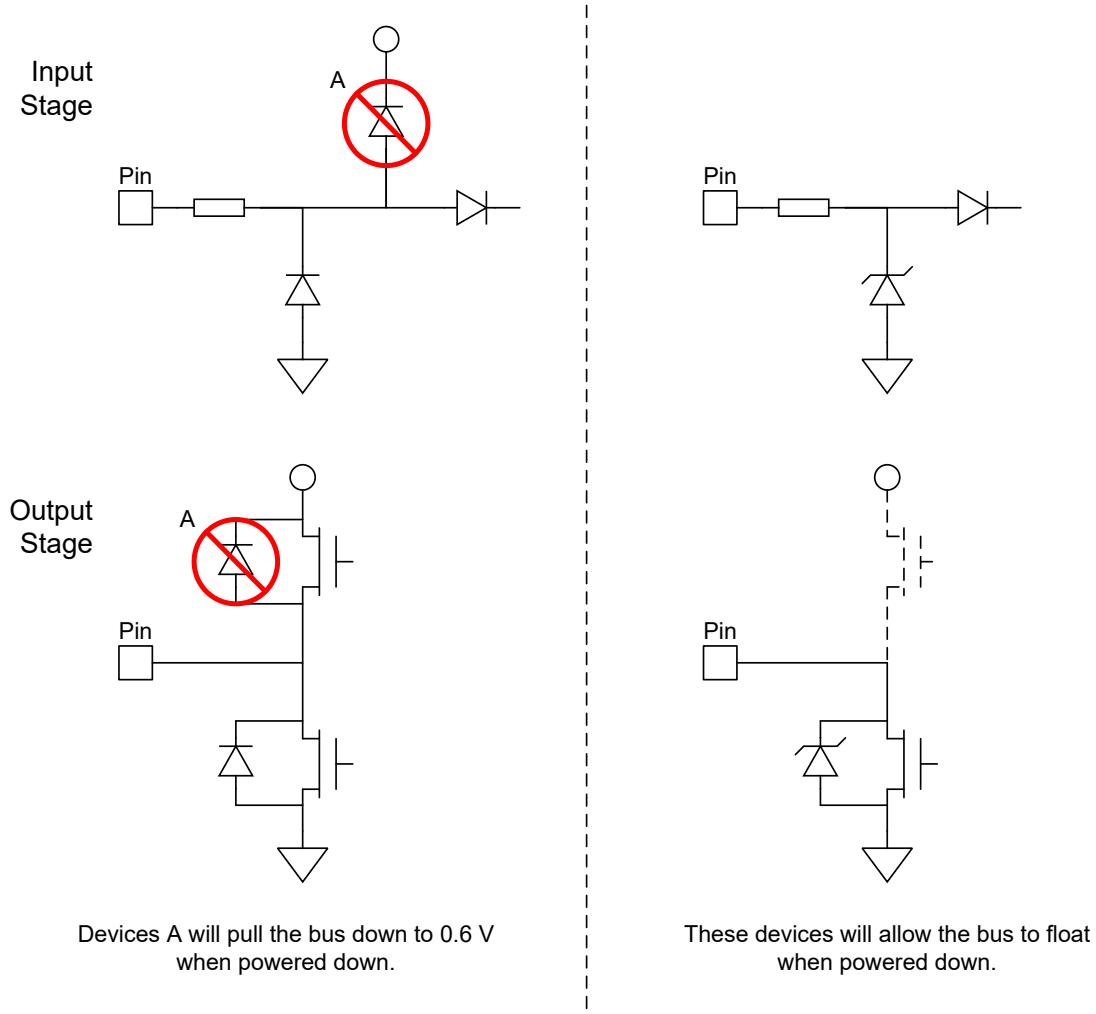


Figure 4: Example input and output stages of SMBus devices

A Low Power and a High Power bus may not be directly connected to each other. Low-power devices should not be expected to work on a High Power bus if the device's current sink capability is smaller than 4 mA. However, it is possible to combine a Low Power bus segment and a High Power bus segment by connecting the two bus segments through a suitable bridge device.

4.2 SMBus Common AC specifications

Both the High Power and Low Power SMBus electrical interface share a common set of ac specifications. Figure 6 illustrates the various SMBus timings and sets the context for the specifications to follow.

SMBus devices may support one of three different maximum bus speeds: 100 kHz, 400 kHz, and 1 MHz. The timing characteristics for each of these maximum bus speeds are given in Table 2.

4.2.1 General timing conditions

The SMBus is designed to provide a predictable communications link between a system and its devices. However some devices, such as a Smart Battery using a microcontroller to support bus transactions and to maintain battery data, may

System Management Bus (SMBus) Specification Version 3.2

require more time than might normally be expected. These specifications take such devices into account while maintaining relatively predictable communications. The following are general comments on the SMBus' timing:

- The bus is at 0 kHz when idle. The $f_{\text{SMB,MIN}}$ specification is intended to dissuade components from taking too long to complete a transaction.
- Every device must be able to recognize and react to a START condition at the fastest timings for its maximum rated bus speed as given in Table 2.

4.2.2 Device timeout definitions and conditions

The $t_{\text{TIMEOUT,MIN}}$ parameter allows a controller or target to conclude that a defective device is holding the clock low indefinitely or a controller is intentionally trying to drive devices off the bus. It is highly recommended that a target device release the bus (stop driving the bus and let SMBCLK and SMBDAT float high) when it detects any single clock held low longer than $t_{\text{TIMEOUT,MIN}}$. Devices that have detected this condition must reset their communication interface and be able to receive a new START condition in no later than $t_{\text{TIMEOUT,MAX}}$.

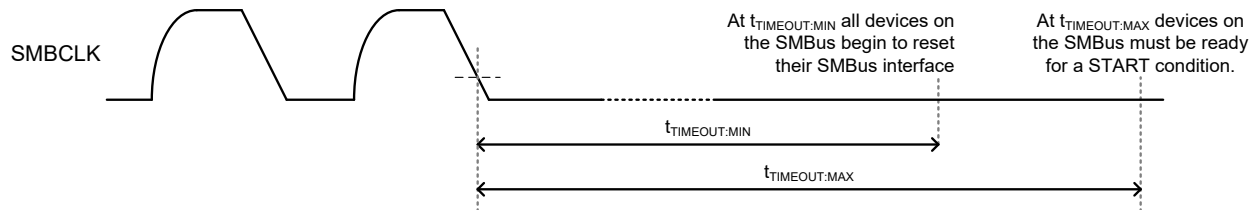


Figure 5: Timeout intervals

System Management Bus (SMBus) Specification Version 3.2

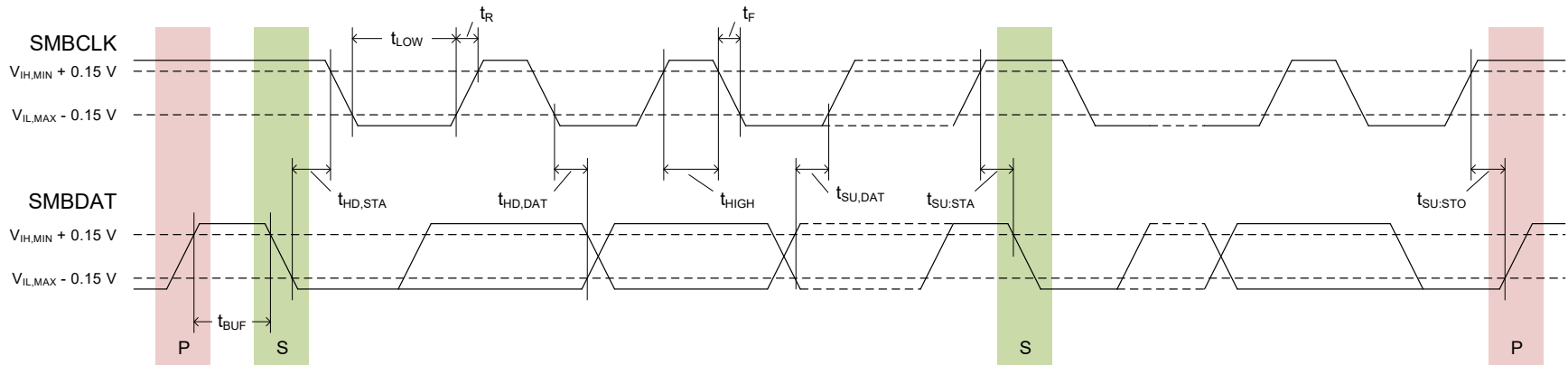


Figure 6: SMBus timing measurements

Table 2: SMBus AC specifications

Symbol	Parameters	100 kHz Class		400 kHz Class		1 MHz Class		Units	Comments
		Min	Max	Min	Max	Min	Max		
f_{SMB}	SMBus Operating Frequency	10	100	10	400	10	1000	kHz	See Note 1
t_{BUF}	Bus free time between STOP and START Condition	4.7	–	1.3	–	0.5	–	μs	
$t_{HD,STA}$	Hold time after (REPEATED) START Condition	4.0	–	0.6	–	0.26	–	μs	After this period, the first clock is generated
$t_{SU,STA}$	REPEATED START Condition setup time	4.7	–	0.6	–	0.26	–	μs	
$t_{SU,STO}$	STOP Condition setup time	4.0	–	0.6	–	0.26	–	μs	
$t_{HD,DAT}$	Data hold time	0	–	0	–	0	–	ns	See Note 2
$t_{SU,DAT}$	Data setup time	250	–	100	–	50	–	ns	
$t_{TIMEOUT}$	Detect clock low timeout	25	35	25	35	25	35	ms	See Note 3
t_{LOW}	Clock low period	4.7	–	1.3	–	0.5	–	μs	
t_{HIGH}	Clock high period	4.0	50	0.6	50	0.26	50	μs	See Note 4

System Management Bus (SMBus) Specification Version 3.2

Symbol	Parameters	100 kHz Class		400 kHz Class		1 MHz Class		Units	Comments
		Min	Max	Min	Max	Min	Max		
$t_{LOW:TEXT}$	Cumulative clock low extend time (target device)	–	25	–	25	–	25	ms	See Note 5
$t_{LOW:CEXT}$	Cumulative clock low extend time (controller device)	–	10	–	10	–	10	ms	See Note 6
t_F	Clock/Data Fall Time	–	300	–	300	–	120	ns	See Note 7
t_R	Clock/Data Rise Time	–	1000	–	300	–	120	ns	See Note 7
t_{SPIKE}	Noise spike suppression time	–	–	0	50	0	50	ns	See Note 8
t_{POR}	Time in which a device must be operational after power-on reset		500		500		500	ms	See Section 4.3.5.2

Note 1: The minimum frequency for synchronizing device clocks is defined in Section 5.3.3. A controller shall not drive the clock at a frequency below the minimum f_{SMB} . Further, the operating clock frequency shall not be reduced below the minimum value of f_{SMB} due to periodic clock extending by target devices as defined in Section 5.3.3. This limit does not apply to the bus idle condition, and this limit is independent from the $t_{LOW:TEXT}$ and $t_{LOW:CEXT}$ limits.

For example, if the SMBCLK is high for $t_{HIGH,MAX}$, the clock must not be periodically stretched longer than $1/f_{SMB,MIN} - t_{HIGH,MAX}$. This requirement does not pertain to a device that extends the SMBCLK low for data processing of a received byte, data buffering and so forth for longer than 100 μ s in a non-periodic way.

Note 2: A device must internally provide sufficient hold time for the SMBDAT signal (with respect to the $V_{IH,MIN}$ of the SMBCLK signal) to bridge the undefined region of the falling edge of SMBCLK.

Note 3: Devices participating in a transfer can abort the transfer in progress and release the bus when any single clock low interval exceeds the value of $t_{TIMEOUT,MIN}$. After the controller in a transaction detects this condition, it must generate a stop condition within or after the current data byte in the transfer process. Devices that have detected this condition must reset their communication and be able to receive a new START condition no later than $t_{TIMEOUT,MAX}$. Typical device examples include the Host controller, an embedded controller, and most devices that can control the SMBus. Some simple devices do not contain a clock low drive circuit; this simple kind of device typically may reset its communications port after a start or a stop condition.

A timeout condition can only be ensured if the device that is forcing the timeout holds the SMBCLK low for $t_{TIMEOUT,MAX}$ or longer.

Note 4: $t_{HIGH,MAX}$ provides a simple guaranteed method for controllers to detect bus idle conditions. A controller can assume that the bus is free if it detects that the clock and data signals have been high for greater than $t_{HIGH,MAX}$.

Note 5: $t_{LOW:TEXT}$ is the cumulative time a given target device is allowed to extend the clock cycles in one message from the initial START to the STOP. It is possible that another target device or the controller will also extend the clock causing the combined

System Management Bus (SMBus) Specification Version 3.2

clock low extend time to be greater than $t_{\text{LOW:TEXT}}$. Therefore, this parameter is measured with the target device as the sole target of a full-speed controller.

Note 6: $t_{\text{LOW:CEXT}}$ is the cumulative time a controller device is allowed to extend its clock cycles within each byte of a message as defined from START-to-ACK, ACK-to-ACK, or ACK-to-STOP. It is possible that a target device or another controller will also extend the clock causing the combined clock low time to be greater than $t_{\text{LOW:CEXT}}$ on a given byte. This parameter is measured with a full speed target device as the sole target of the controller.

Note 7: The rise and fall time measurement limits are defined as follows:

Rise Time Limits: $(V_{\text{IL,MAX}} - 0.15 \text{ V})$ to $(V_{\text{IH,MIN}} + 0.15 \text{ V})$

Fall Time Limits: $(V_{\text{IH,MIN}} + 0.15 \text{ V})$ to $(V_{\text{IL,MAX}} - 0.15 \text{ V})$

Note 8: Devices must provide a means to reject noise spikes of a duration up to the maximum specified value.

System Management Bus (SMBus) Specification Version 3.2

4.2.3 Controller device clock extension definitions and conditions

Figure 7 illustrates the definition of the clock extension intervals, $t_{\text{LOW:CEXT}}$ and $t_{\text{LOW:TEXT}}$.

The interval $t_{\text{LOW:CEXT}}$ is defined as the cumulative time a controller device is allowed to extend its clock cycles within one byte in a message as measured from:

- START to ACK
- ACK to ACK
- ACK to STOP.

A controller may not violate $t_{\text{LOW:CEXT}}$ except when caused by the combination of its clock extension with the clock extension from a target device or another controller.

A controller is allowed to abort the transaction in progress to any target that violates the $t_{\text{LOW:TEXT}}$ or $t_{\text{TIMEOUT,MIN}}$ specifications. This can be accomplished by the controller issuing a STOP condition at the conclusion of the byte transfer in progress.

A controller should take care when evaluating $t_{\text{LOW:TEXT}}$ violation during arbitration since the clock may be held low by multiple target devices simultaneously. The arbitration interval may be extended for several bytes in the case of devices that respond to commands to the SMBus ARP address. If timeouts are handled at the driver level, the software may need to allow timeouts to be configured or disabled by applications that use the driver in order to support older devices that do not fully meet the SMBus timeout specifications. Devices that implement “shared” target addresses may also violate this specification due to combined clock stretching by the different devices sharing the address. The interval $t_{\text{TIMEOUT,MIN}}$, however, does not increase due to combined clock stretching. Therefore, this is a safer timeout parameter for a controller to use when it knows it is accessing SMBus 2.0 or later devices.

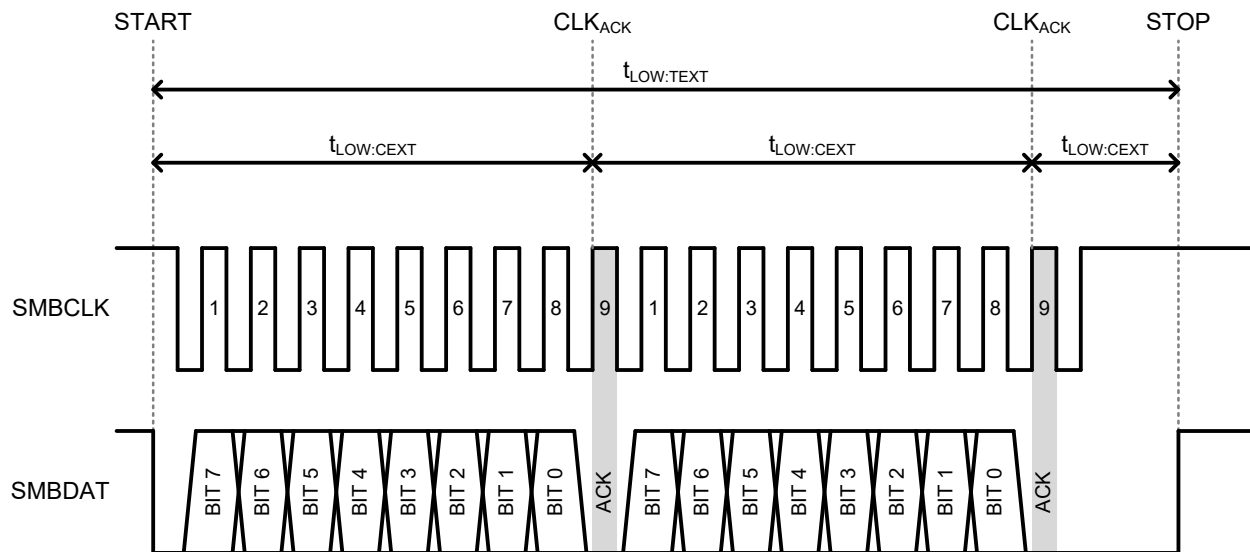


Figure 7: Clock extension measurement intervals

4.2.4 Target device clock extension

Target devices that violate $t_{\text{LOW:TEXT}}$ are not conformant with this specification. A controller is allowed to abort the transaction in progress to any target that violates the $t_{\text{LOW:TEXT}}$ or $t_{\text{TIMEOUT,MIN}}$ specifications.

System Management Bus (SMBus) Specification Version 3.2

4.2.5 SMBDAT low timeout

It is possible that a malfunctioning device holds the SMBDAT line low indefinitely. This would prevent the controller from issuing a STOP condition and ending a transaction. At this time there is no specification on the maximum time that a device can hold SMBDAT low after the controller raises SMBCLK after the last bit of a transaction. Such a specification is under consideration for future revisions of the SMBus specification.

In the meantime, the recommendation is that if SMBDAT is still low $t_{\text{TIMEOUT,MAX}}$ after SMBCLK has gone high at the end of a transaction the controller should hold SMBCLK low for at least $t_{\text{TIMEOUT,MAX}}$ in an attempt to reset the SMBus interface of all of the devices on the bus.

4.3 DC Specifications

The SMBus offers two classes of electrical interface specifications. The Low Power specification is for systems where conservation of energy is more important than bus speed, such as in battery powered systems. The High Power specification is used where higher bus speeds are needed, such as in computing equipment.

4.3.1 Supply voltage requirements

Both the Low Power and High Power classes specify that the nominal supply voltage of devices attached to the bus may range from 1.8 V (1.62 V minimum) to 5.0 V (5.5 V maximum).

This does not mean that a SMBus device must operate with any supply in the range of 1.62 V to 5.5 V. A device manufacturer may choose any operating voltage or operating voltage within the specified limits. The operating voltage range must be given in the device data sheet.

There is no requirement that all devices on a SMBus be powered from the same supply voltage or supply voltages of the same value. If devices with different supply voltages are used, as shown in Figure 8, the SMBus signals (SMBCLK, SMBDAT, and SMBALERT#, if present) must be pulled up to the highest supply voltage, or a voltage equal to the highest supply voltage, of any device attached to the bus.

This means that the I/O circuits for the SMBus signals (SMBCLK, SMBDAT, and SMBALERT#, if present) must withstand, without damage or degradation, the voltage on the signal pin being pulled up to 5.5 V.

System Management Bus (SMBus) Specification Version 3.2

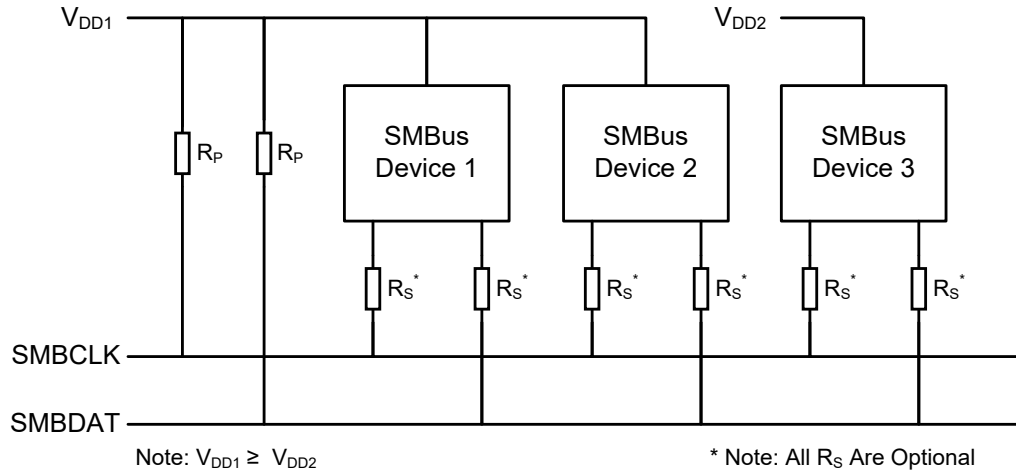


Figure 8: SMBus branch with multiple devices attached

4.3.2 SMBus branch circuit model

Figure 9 shows the electrical model of the SMBus. A series protection resistor can be used for ESD protection of components that can be hot-plugged to the system, such as a Smart Battery. The Equivalent Series Resistor (ESR) of the device and interconnect must not exceed 1.1 k Ω in order to maintain the $V_{OL,MAX}$ of the SMBus Low Power specification. This circuit model is equally valid for High Power components discussed in Section 4.3.4. Due to significantly different bus loading, individual component values will change.

The value of the pull-up resistors (R_P) will vary depending on the system's V_{DD} and the bus' actual capacitance. Current sources (I_P) offer better performance but with increased cost.

The optional diode shown in the diagram above is for ESD protection. It may be necessary in systems where a removable SMBus device such as a Smart Battery is used. However, circuits as actually implemented must comply with the previously stated unpowered leakage current specification.

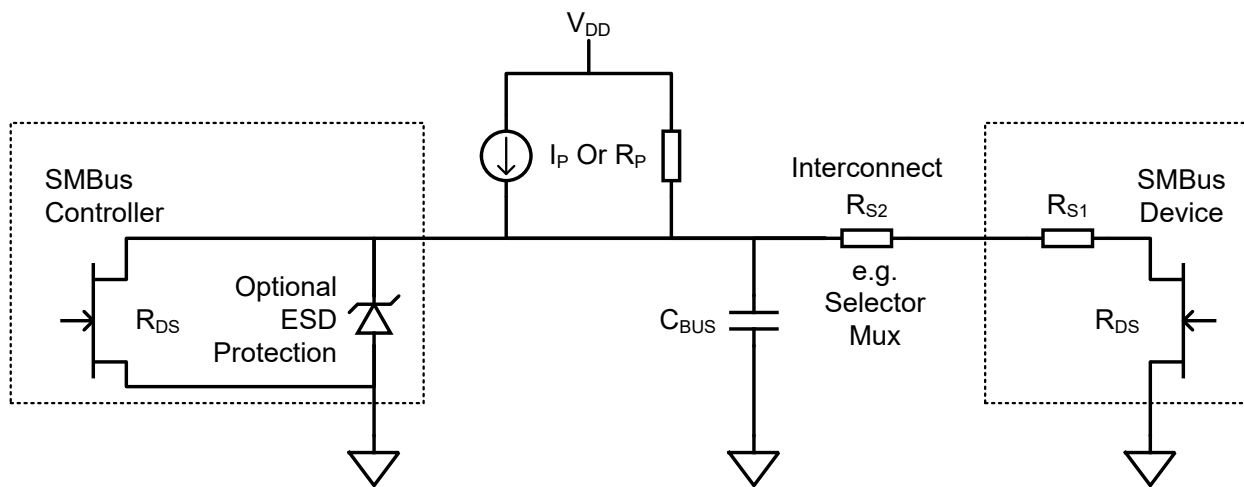


Figure 9: SMBus circuit model

System Management Bus (SMBus) Specification Version 3.2

4.3.3 Low Power DC parameters

Table 3: Low Power SMBus DC specification

Symbol	Parameter	Limits		Units	Comments
		Min	Max		
V _{DD}	Nominal bus voltage	1.8	5.0	V	
	Operating bus voltage	1.62	5.5	V	Nominal ±10%
V _{IH}	HIGH level input voltage for SMBCLK and SMBDAT	1.35	V _{DD}	V	
V _{IL}	LOW level input voltage for SMBCLK and SMBDAT	–	0.8	V	
V _{OL}	Low level output voltage for SMBCLK and SMBDAT	–	0.4	V	I _{OL} = -350 µA
I _{LEAK_PIN}	Input leakage current per device pin	–5	5	µA	Note 1
I _{PULLUP}	Current through pull-up resistor or from pull-up current source	100	350	µA	Note 2

Note 1: Devices must meet this specification whether powered or unpowered. However, a microcontroller acting as a SMBus controller may exceed I_{LEAK_PIN} by no more than 10 µA.

Note 2: The I_{PULLUP,MAX} specification is determined primarily by the need to accommodate a maximum of 1.1 kΩ equivalent series resistor of removable SMBus devices, such as the Smart Battery, while maintaining the V_{OL,MAX} of the bus.

Because of the relatively low pull-up current, the system designer must ensure that the loading on the bus remains within acceptable limits. Additionally, to prevent bus loading, any devices that remain connected to the active bus while unpowered (that is, their V_{DD} lowered to zero), must also meet the leakage current specification.

It is the responsibility of the system designer to ensure that all SMBus components comply with the SMBus timing requirements and are able to operate within the voltage requirements of the specific system.

Components attached to SMBus may operate at different voltages. Therefore the SMBus cannot assume that all devices will share a common V_{DD}, hence fixed voltage logic levels.

4.3.4 High Power DC specifications

The electrical specifications for High Power SMBus are given in Table 4. These higher power specifications provide the robustness necessary, for example, to allow SMBus to cross the PCI connector, thus allowing SMBus devices on PCI add-in cards to communicate with other devices on both the system board and other PCI add-in cards in the same system. These higher power electrical specifications are an alternative to the lower power specifications stated above and may be used in environments where necessary. Some parameters are explained further in the sections below.

System Management Bus (SMBus) Specification Version 3.2

Table 4: High Power SMBus DC specification

Symbol	Parameters	100 kHz Class		400 kHz Class		1 MHz Class		Units	Comments
		Min	Max	Min	Max	Min	Max		
V _{DD}	Nominal Bus Voltage	1.8	5	1.8	5	1.8	5	V	
	Operating Bus Voltage	1.62	5.5	1.62	5.5	1.62	5.5	V	Nominal ± 10%
V _{IL}	Low-level Input Voltage	–	0.8	–	0.8	–	0.8	V	
V _{IH}	High-level Input Voltage	1.35	V _{DD}	1.35	V _{DD}	1.35	V _{DD}	V	
V _{HYS}	Hysteresis voltage of Schmitt trigger inputs	80	–	80	–	80	–	mV	
V _{OL}	Low-level Output Voltage (See Section 4.3.4.2)	–	0.4	–	–	–	–	V	I _{OL} = 4 mA
		–	–	–	0.4	–	–	V	I _{OL} = 6 mA
		–	–	–	–	–	0.4	V	I _{OL} = 20 mA
I _{LEAK-BUS}	Input Leakage Per Bus Segment	–200	200	–200	200	–200	200	μA	
I _{LEAK-PIN}	Input Leakage Per Device Pin	–10	10	–10	10	–10	10	μA	
C _{BUS}	Capacitive Load Per Bus Segment	–	–	–	400	–	400	pF	
C _{PIN}	Capacitance For SMBDAT Or SMBCLK Pin	–	–	–	10	–	10	pF	Recommended

System Management Bus (SMBus) Specification Version 3.2

4.3.4.1 Capacitive load of High Power SMBus lines

Capacitive load for each bus line includes all pin, wire and connector capacitances. The maximum capacitive load affects the selection of the R_P pull-up resistor or the current source in order to meet the rise time specifications of SMBus.

Pin capacitance (C_{PIN}) is defined as the total capacitive load of one SMBus device as seen in a typical manufacturer's data sheet. The value is a recommended guideline so that two such devices may, for example, be populated on an add-in card.

4.3.4.2 Minimum current sinking requirements for SMBus devices

SMBus devices used in Low Power segments have practically no minimum current sinking requirements due to the low pull-up current specified for Low Power segments.

Devices in High Power segments are required to sink a minimum current while maintaining the $V_{OL,MAX}$ of 0.4 volts. The minimum current depends on the maximum bus clock speed and is specified to assure that the rise time specification can be met with a resistive pull-up at the minimum V_{DD} , maximum bus segment capacitance, and maximum bus segment leakage current. The requirement for sink current also determines the minimum value of the pull-up resistor R_P that can be used in SMBus systems.

4.3.5 Additional common Low and High Power specifications

4.3.5.1 SMBus 'back powering' considerations

Unpowered devices connected to either a Low Power or High Power SMBus segment must provide, either within the device or through the interface circuitry, protection against back powering the SMBus. Unpowered Low Power devices connected to High Power segments must meet leakage specifications in Section 4.3.3. Unpowered High Power devices must meet the leakage specifications in Section 4.3.4.

4.3.5.2 Power-on reset

SMBus devices detect a power-on event in one of three ways:

- By detecting that power is being applied to the device,
- By an external reset signal that is being asserted or
- For self-powered or always-powered devices, by detecting that the SMBus is active (clock and data lines have gone high after being low for more than 2.5 seconds).

A SMBus device must respond to a power-on event by bringing the device into an operational state within T_{POR} , defined in Table 2, after the device has been supplied power that is within the device's normal operating range. Self-powered or always-powered devices, such as Smart Batteries, are not required to do a complete power-on reset but must be in an operational state within 500 milliseconds after the SMBus becomes active.

5. Layer 2 – The Data Link Layer

5.1 Bit Transfers

SMBus uses fixed voltage levels to define the logic “ZERO” and logic “ONE” on the bus respectively.

5.1.1 Data validity

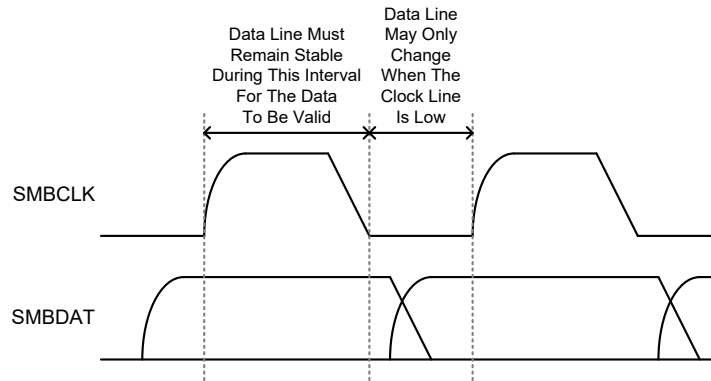


Figure 10: Data validity

The data on SMBDAT must be stable during the high period of the clock. Data can change state only when SMBCLK is low. Figure 10 illustrates the relationships. See Figure 6 and Table 2 for actual specifications.

5.1.2 START and STOP conditions

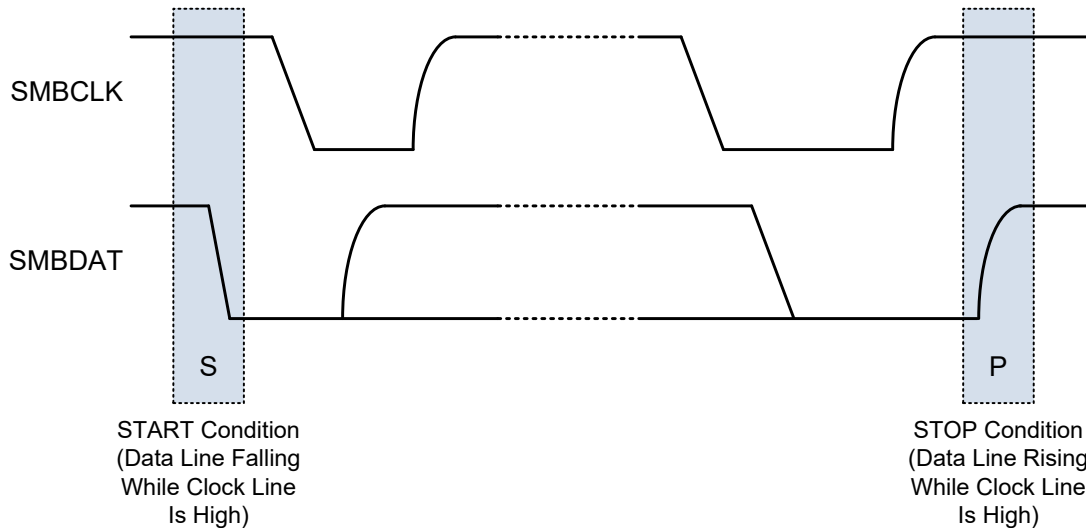


Figure 11: START and STOP conditions

Two unique bus situations define a message START and STOP condition.

1. A HIGH to LOW transition of the SMBDAT line while SMBCLK is HIGH indicates a message START condition.
2. A LOW to HIGH transition of the SMBDAT line while SMBCLK is HIGH defines a message STOP condition. START and STOP conditions are always generated by the bus controller. After a START condition the bus is considered to be busy.

System Management Bus (SMBus) Specification Version 3.2

The bus becomes idle again after certain time following a STOP condition or after both the SMBCLK and SMBDAT lines remain high for more than $t_{HIGH,MAX}$.

5.1.3 Bus idle condition

Bus idle is the condition during which the SMBCLK and SMBDAT lines are both high, without any state transitions, for a time period specified as the minimum of the following:

- t_{BUF} from the last detected STOP condition or
- $t_{HIGH,MAX}$

where t_{BUF} and $t_{HIGH,MAX}$ are defined in Table 2. The latter timing parameter covers the condition where a controller has been dynamically added to the bus and may not have detected a state transition on the SMBCLK or SMBDAT lines. In this case, the controller must wait long enough to ensure that a transfer is not currently in progress.

5.2 Data Transfers On SMBus

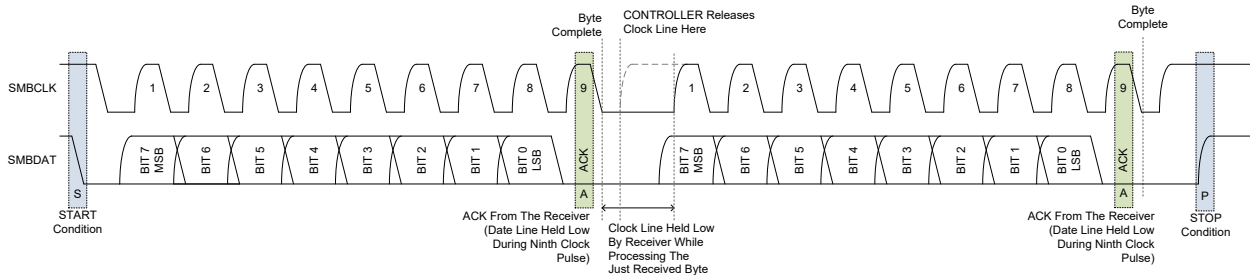


Figure 12: SMBus byte format

Every byte consists of 8 bits. Each byte transferred on the bus must be followed by an acknowledge bit. Bytes are transferred with the most significant bit (MSB) first.

The diagram below, Figure 13 illustrates the positioning of acknowledge (ACK) and Figure 14 illustrates not acknowledge (NACK) pulses relative to other data.

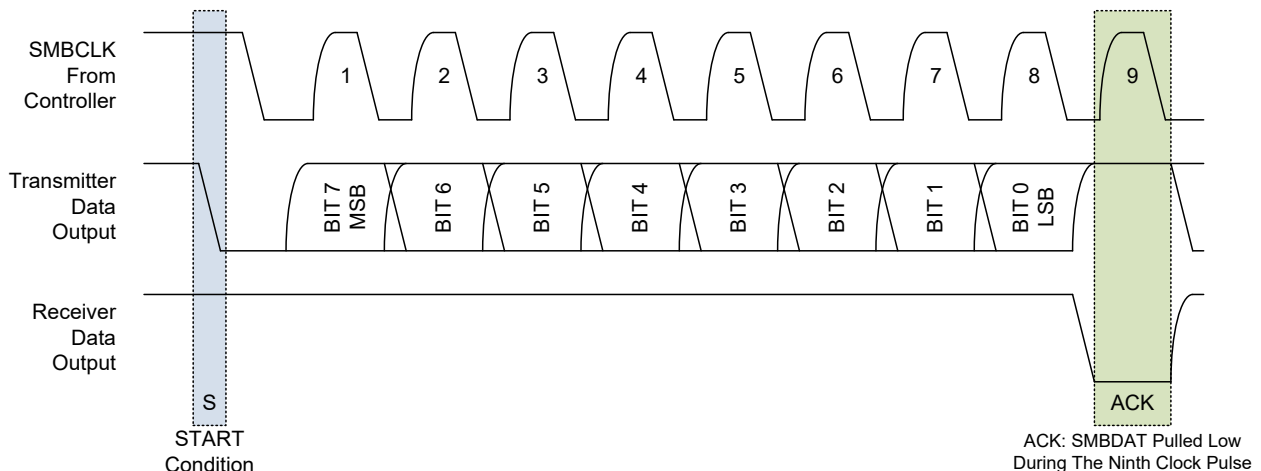


Figure 13: ACK signaling of SMBus

System Management Bus (SMBus) Specification Version 3.2

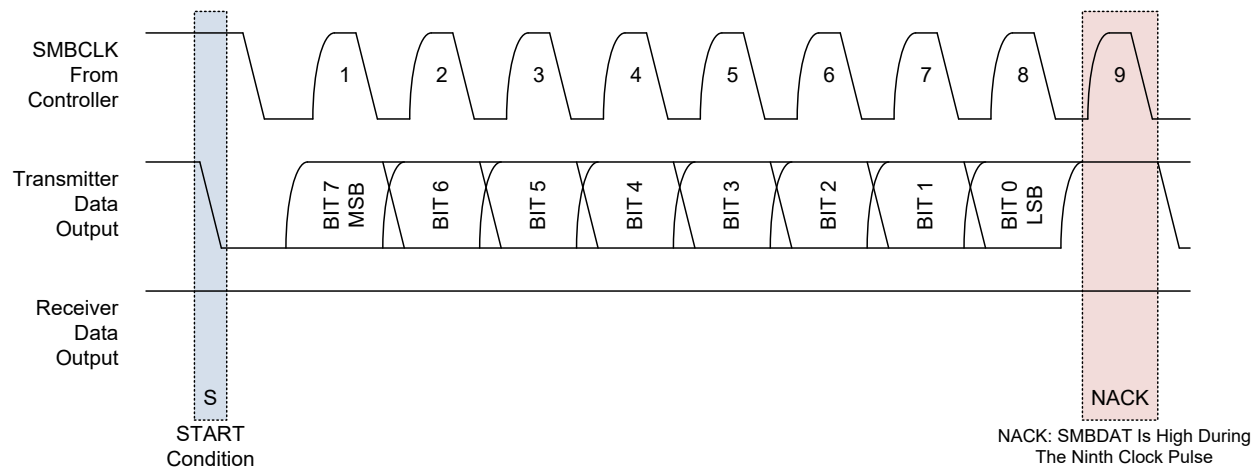


Figure 14: NACK signaling on SMBus

The acknowledge-related clock pulse is generated by the controller. The transmitter, controller or target, releases the SMBDAT line (HIGH) during the acknowledge clock cycle. In order to acknowledge a byte, the receiver must pull the SMBDAT line LOW during the HIGH period of the clock pulse according to the SMBus timing specifications. A receiver that wishes to NACK a byte must let the SMBDAT line remain HIGH during the acknowledge clock pulse.

A SMBus device must always acknowledge (ACK) its own address. SMBus uses this signaling to detect the presence of detachable devices on the bus.

A SMBus target device may decide to NACK a byte other than the address byte in the following situations:

- The target device is busy performing a real time task, or data requested are not available. The controller upon detection of the NACK condition must generate a STOP condition to abort the transfer. Note that as an alternative, the target device can extend the clock LOW period within the limits of this specification in order to complete its tasks and continue the transfer.
- The target device detects an invalid command or invalid data. In this case the target device must NACK the received byte. The controller upon detection of this condition must generate a STOP condition and retry the transaction.
- If a controller-receiver is involved in the transaction it must signal the end of data to the target-transmitter by generating an NACK on the last byte that was clocked out by the target. The target-transmitter must release the data line to allow the controller to generate a STOP condition.

The latter mechanism is one way for a device to detect whether a target transmitter implements Packet Error Checking. See Section 6.4 for more information on Packet Error Checking.

5.3 Clock Generation And Arbitration

5.3.1 Synchronization

A situation may occur in which more than one controller is trying to place clock signals on the bus at the same time. The resulting bus signal will be the wired AND of all the clock signals provided by the controllers.

System Management Bus (SMBus) Specification Version 3.2

It is important for the bus integrity that there is a clear definition of the clock, bit by bit for all controllers involved during an arbitration process.

A high-to-low transition on the SMBCLK line will cause all devices involved to start counting off their LOW period and start driving SMBCLK low if the device is a controller. As soon as a device finishes counting its LOW period it will release the SMBCLK line. Nevertheless, the actual signal on the SMBCLK may not transition to the HIGH state if another controller with longer LOW period keeps the SMBCLK line LOW. In this situation the controller that released the SMBCLK line will enter the SMBCLK HIGH wait period. When all devices have counted off their LOW period, the SMBCLK line will be released and go HIGH. All devices concerned at this point will start counting their HIGH periods. The first device that completes its HIGH period count will pull the SMBCLK line LOW and the cycle will start again.

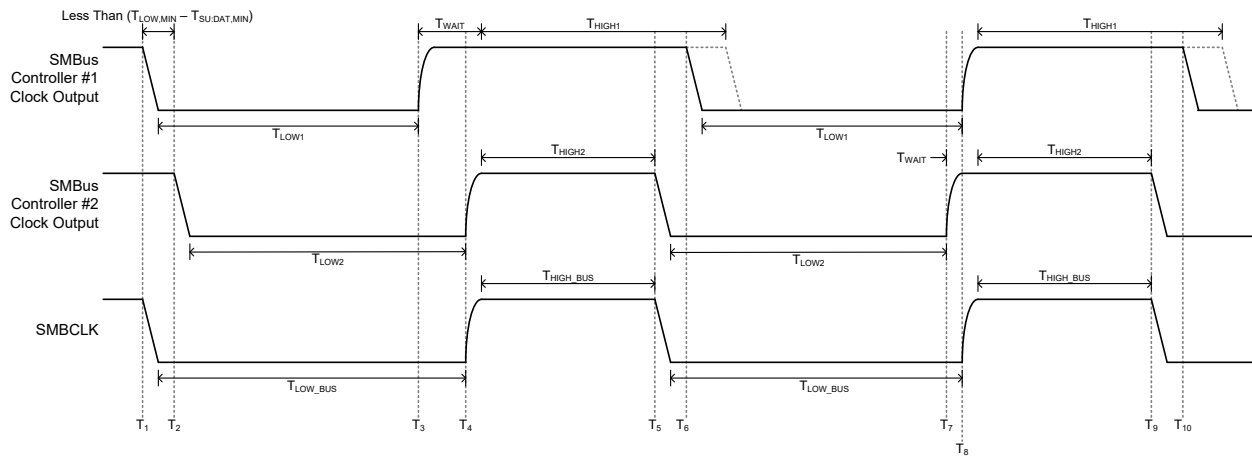


Figure 15: SMBus clock synchronization

In Figure 15, the interval between the first high-to-low transition of CLK1 and CLK2 must be less than $(t_{LOW,MIN} - t_{SU,DAT})$. This way, a synchronized clock is provided for all devices, where the SMBCLK LOW period is determined by the slowest device and the SMBCLK HIGH period is determined by the fastest device.

5.3.2 Arbitration

A controller may start a transfer only if the bus is idle. One or more devices may generate a START condition within the minimum hold time ($T_{HOLD,STA}$) resulting in a defined START condition on the bus. Figure 16 conceptually illustrates two controllers driving a START condition nearly simultaneously such that neither device realizes that another device has also put a START condition on the bus.

Since the devices that generated the START condition may not be aware that other controllers are contending for the bus, arbitration takes place on the SMBDAT line while the SMBCLK is HIGH. A controller that transmits a HIGH level, while another controller (or controllers) is transmitting a LOW level on the SMBDAT line loses control of the bus in the arbitration cycle.

The controller that lost the arbitration may continue to provide clock pulses until the completion of the byte on which it lost the arbitration. Arbitration in the case of two controllers trying to access the same device may continue past the address byte. In this case arbitration will continue with the remaining transfer data. In the event that two controllers are arbitrating and the first controller wants to put a repeated START on the

System Management Bus (SMBus) Specification Version 3.2

bus while the second controller wants to put a ZERO data bit on the bus, the first controller must recognize that it cannot cause the start and lose arbitration. If the first controller wants to put a repeated START on the bus while the second controller wants to put a ONE data bit on the bus, the second controller will see the repeated start and lose arbitration. If both controllers put a repeated START on the bus in the same bit position, arbitration should continue at each data bit.

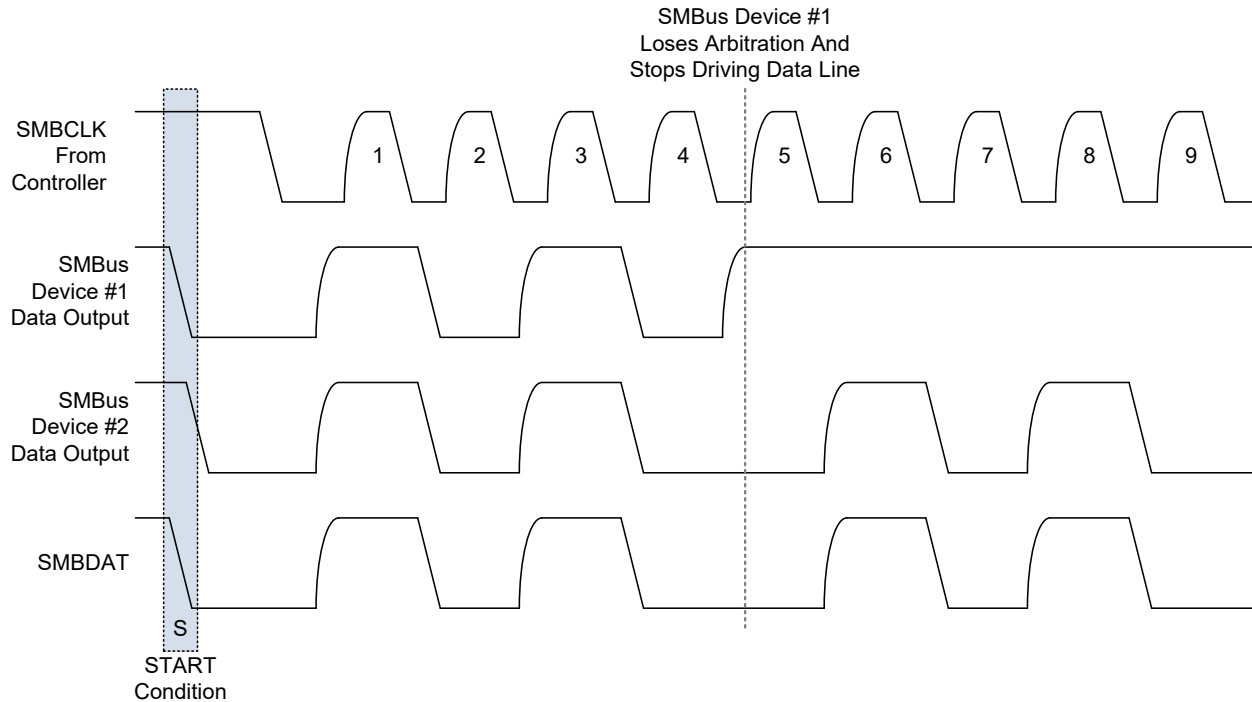


Figure 16: SMBus arbitration

This mechanism requires that SMBus controller devices participating in an arbitration cycle monitor the actual state of the SMBDAT line during arbitration.

If a controller also incorporates a target function and loses control of the bus in the arbitration cycle during the address stage, it must check the actual address placed on the bus in order to determine whether another controller is trying to access it. In this case the controller that lost the arbitration must switch immediately to its target receiver mode in order to receive the rest of the message.

During each bus transaction controllers are still required to be able to recognize a repeated START condition on the bus. A device that detects a repeated START condition that it didn't generate must quit the transfer.

Once a controller has won arbitration, arbitration is disallowed until the bus is again idle.

5.3.3 Clock low extending

SMBus provides a clock synchronization mechanism to allow devices of different speeds to co-exist on the bus. In addition to the bus arbitration procedure the clock synchronization mechanism can be used during a bit or a byte transfer in order to allow slower target devices to cope with faster controllers.

System Management Bus (SMBus) Specification Version 3.2

At the bit level, a device may slow down the bus by periodically extending the clock low interval.

Devices are allowed to stretch the clock during the transfer of one message up to the maximum limits described in the AC specifications of this document. Nevertheless, devices designed to stretch every clock cycle periodically must maintain the $f_{\text{SMB,MIN}}$ frequency of 10 kHz ($1/f_{\text{SMB,MIN}} = 100 \mu\text{s}$) in order to preserve the SMBus bandwidth.

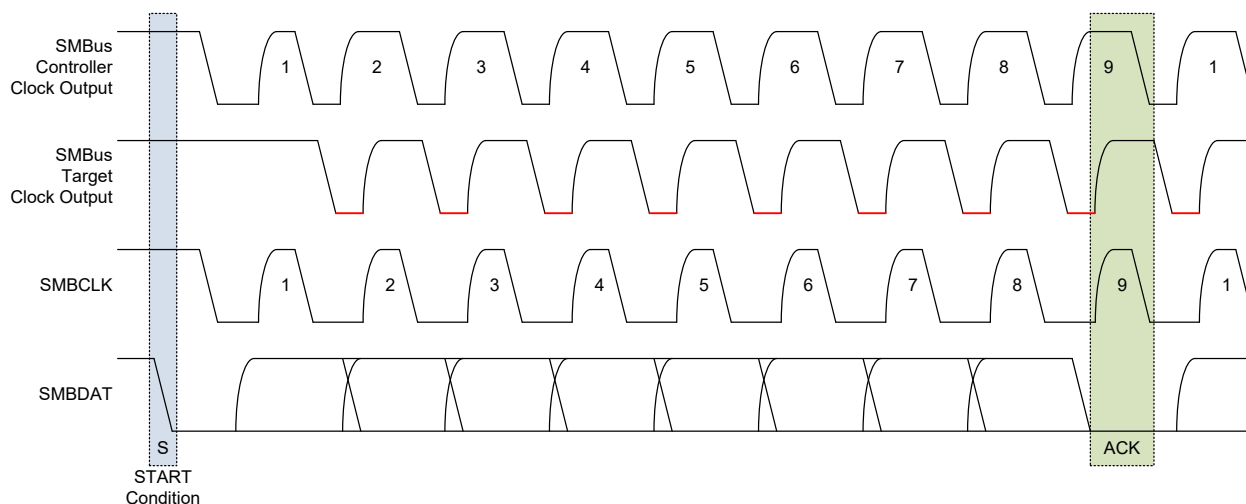


Figure 17: Periodic clock stretching by a target SMBus device

Clock LOW extension, or stretching, if necessary, must start after the SMBCLK high-to-low transition within a $t_{\text{LOW:MIN}} - t_{\text{SU:DAT}}$ interval. Devices designed to stretch the clock on every bit transfer must maintain the minimum bus frequency $f_{\text{SMB,MIN}}$ of 10 kHz. A target device may opt to stretch the clock line during a specific bit transfer in order to process a real time task or check the validity of a byte. In this case the target device must adhere to the t_{TIMEOUT} and $t_{\text{LOW:TEXT}}$ specifications. Clock LOW extension may occur during any bit transfer including the clock provided prior to the ACK clock pulse.

A target device may select to stretch the clock LOW period between byte transfers on the bus, in order to process received data or prepare data for transmission. In this case the target device will hold the clock line LOW after the reception and acknowledgement of a byte. Again the target device is responsible for not violating the $t_{\text{LOW:TEXT}}$ specification of SMBus.

During a bus transaction the controller also can select to extend the clock LOW period between bytes or at any point in the byte transfer, including the clock LOW period after the byte transfer and before the acknowledgement clock. The controller may need to extend the clock LOW period selectively in order to process data or serve a real time task. In doing so, the controller must not exceed the $t_{\text{LOW:CEXT}}$ specification.

Both controller and target devices must adhere to the SMBus t_{TIMEOUT} specification in order to maintain bus bandwidth and recovery from fatal bus conditions.

System Management Bus (SMBus) Specification Version 3.2

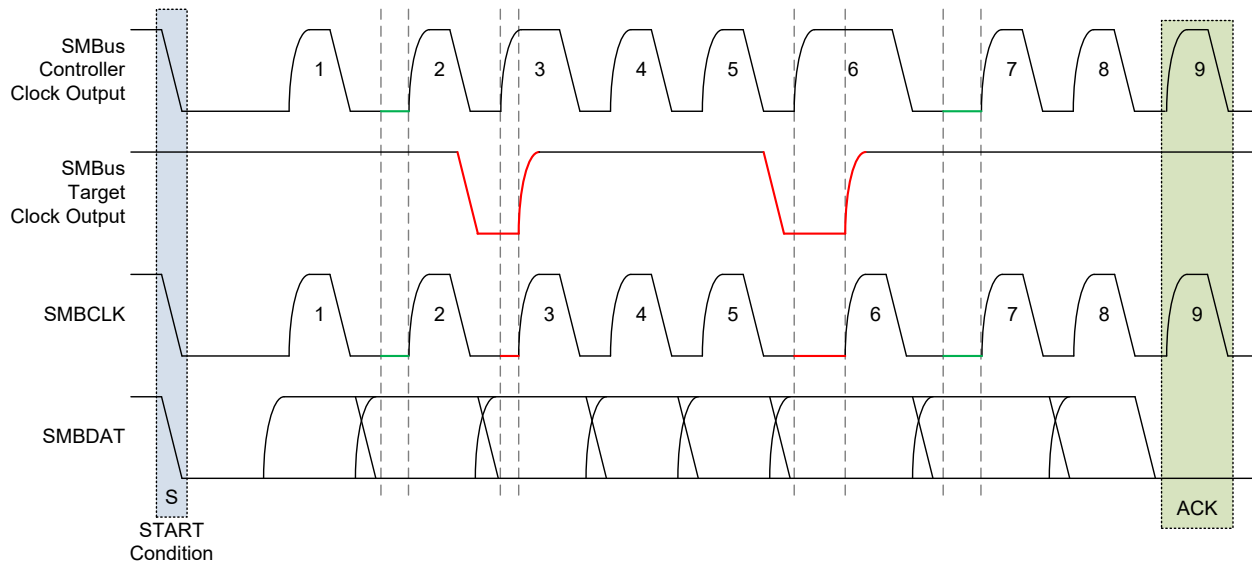


Figure 18: Random clock stretching

5.4 Data Transfer Formats

SMBus data transfers follow the format shown in Figure 19.

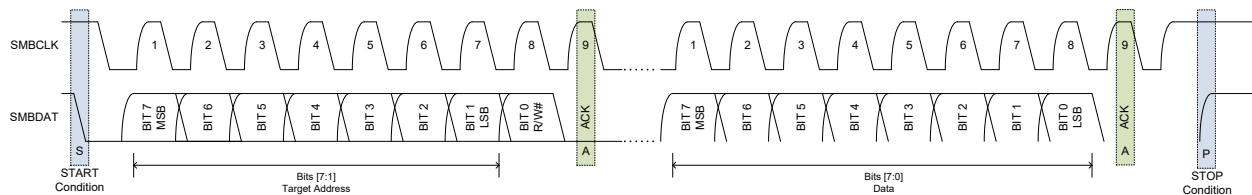


Figure 19: Data transfer over SMBus

After the START condition (“S”), the controller places the 7-bit address of the target device it wants to address on the bus. The address is 7 bits long followed by an eighth bit indicating the direction of the data transfer (R/W#); a ZERO indicates a transmission (WRITE) while a ONE indicates a request for data (READ). A data transfer is always terminated by a STOP (P) condition generated by the controller.

Specific SMBus protocols require the controller to generate a repeated START condition followed by the target device address without first generating a STOP condition.

6. Layer 3 – Network layer

6.1 Usage Model

Three different types of devices are referred to in this specification: controllers, targets, and Hosts.

6.1.1 Controller devices

A controller device issues commands, generates the clocks, and terminates the transfer. Depending on the transaction type, a controller in a transaction may transmit data to a target device (controller-transmitter) or it may receive data from a target device (controller-receiver).

System Management Bus (SMBus) Specification Version 3.2

A device may be designed to be a controller only or it may be a controller-target, in which it can act either as a controller device or as a target device.

There may be more than one controller on a SMBus.

6.1.2 Target devices

A target device responds to its own address and receives commands. Depending on the transaction type, a target may either receive data from a controller device (target-receiver) or may send data to a controller device (target-transmitter).

A device may be designed to be a target only. A target device may also be designed to become a controller in certain circumstances, such as when using the SMBus Host Notify protocol (Section 6.5.9).

The number of targets in a system is theoretically limited only by the number of available addresses. In practice, the number of targets is limited by the maximum bus capacitance and rise time specifications.

6.1.3 Host

A Host is a specialized controller that provides the main interface to the system's CPU or system management processor. A Host must be a controller-target and must support the SMBus Host Notify protocol (Section 6.5.9).

A system does not need to have a Host. One example of a hostless system is a simple battery charging station. The station might sit plugged into a wall waiting to charge a smart battery.

There may be at most one Host in a system.

6.2 Device Identification – Target Address

6.2.1 Uniqueness required

Any device that exists on the System Management Bus as a target has a unique address called the Target Address.

6.2.2 SMBus address types

Several SMBus devices can be used simultaneously in an actual system. In case of device address contention the designer may use either programmable features implemented in SMBus devices to resolve such contention or/and multiple SMBus branches within the same system to spread devices that use the same address.

There are several types of addresses currently in use in SMBus systems. Table 17 in Appendix C provides a complete list of available, reserved, special purpose, and pre-assigned SMBus addresses.

6.2.2.1 Reserved addresses

SMBus, Access.bus and I²C reserve several addresses for specific bus functions as defined in Table 17. These addresses must not be used by or assigned to any SMBus target device unless otherwise detailed by this specification.

All other addresses are available for address assignment for dynamic address devices and/or for miscellaneous devices. Miscellaneous device addresses are discussed in Section 6.2.2.4.

System Management Bus (SMBus) Specification Version 3.2

6.2.2.2 Purpose-assigned addresses

These addresses are assigned by the SMBus Working Group to specific types of devices. Each device type that obtains an assigned address has to have a SMBus specification associated with it. Some systems using SMBus assume that if a device exists at a purpose-assigned address then the device complies with the associated specifications for that address. For example, SMBus application to Smart Battery implementations assumes that Smart Battery devices and controllers are at their purpose-assigned addresses. Thus, devices that do not meet the purpose-assigned address specifications for Smart Battery devices cannot be used in Smart Battery applications.

Other SMBus implementations do not rely solely on the device address to identify a device's functionality. In these applications, devices may have addresses that overlap with the purpose-assigned addresses.

The device manufacturer is forewarned that this may preclude use of that device in other applications. In general, purpose-assigned addresses should be avoided except for devices that are intended to meet the specification for the corresponding address(es). The device manufacturer should consult the SMBus WG to get the latest information on purpose-assigned addresses as a guide to whether their address assignment is disallowed in certain SMBus applications.

6.2.2.3 Prototype addresses

The Prototype addresses (1001 0XXb) are reserved for device prototyping and experimenting in applications that utilize purpose-assigned addresses. They are not intended for production parts and should never be assigned to any device.

6.2.2.4 Miscellaneous device addresses

Manufacturers have produced and may continue producing SMBus compatible devices for specific system purposes, for which they do not need to implement the complete SMBus specification, or for which they do not require explicit support from the operating system. Such devices, for example, may be port expanders, D/A circuits, etc.

6.2.2.5 Dynamically assigned addresses

Version 2.0 of the SMBus specification introduced the concept of dynamically assigned addresses using the Address Resolution Protocol (ARP). This is detailed in Section 6.6.

6.2.2.6 SMBus Alert Response Address

The SMBus Alert Response Address (0001 100b) can be a substitute for device controller capability. See Appendix A for details.

6.2.2.7 SMBus Device Default Address

The SMBus Device Default Address (1100 001b) is reserved for use by the SMBus Address Resolution Protocol, which allows addresses to be assigned dynamically. See Section 6.5.10 for details

6.2.2.8 SMBus Host Address

The Host has the lowest legitimate address (0001 000b) so that messages going to the Host have the highest priority with respect to bus arbitration.

System Management Bus (SMBus) Specification Version 3.2

6.2.2.9 10-bit Target Addresses

All 10-bit target addresses are reserved for future use and are outside the scope of this specification.

6.3 Using A Device

A typical SMBus device will have a set of commands by which data can be read and written. All commands are 8 bits (1 byte) long. Command arguments and return values can vary in length. Accessing a command that does not exist or is not supported may cause an error condition. In accordance with this specification, the Most Significant Bit is transferred first.

There are fifteen possible command protocols for any given device. A target device may use any or all of the fifteen protocols to communicate. The protocols are Quick Command, Send Byte, Receive Byte, Write Byte, Write Word, Read Byte, Read Word, Process Call, Block Read, Block Write and Block Write-Block Read Process Call, Write 32, Read 32, Write 64, and Read 64.

6.4 Packet Error Checking

The Packet Error Checking mechanism improves reliability and communication robustness. Implementation of Packet Error Checking by SMBus devices is optional for SMBus devices but is required for devices participating in and only during the ARP process. SMBus devices that implement Packet Error Checking must be capable to communicate with the controller and other devices that do not implement the Packet Error Checking mechanism.

Packet Error Checking, whenever applicable, is implemented by appending a Packet Error Code (PEC) at the end of each message transfer. Each protocol (except for Quick Command and the SMBus Host Notify protocol described Section 6.5.9) has two variants: one with the Packet Error Code (PEC) byte and one without. The PEC is a CRC-8 error-checking byte, calculated on all the message bytes (including addresses and read/write bits). The PEC is appended to the message by the device that supplied the last data byte.

6.4.1 Packet error checking implementation

The SMBus must accommodate any mixture of devices that support Packet Error Checking and devices that do not. A device that acts as a target and supports the PEC must always be prepared to perform the target transfer with or without a PEC, verify the correctness of the PEC if present, and only process the message if the PEC is correct. Implementations are encouraged to issue a NACK if the PEC is present but not correct.

6.4.1.1 ACK/NACK and Packet Error Checking

The ACK/NACK bit in a SMBus byte is as susceptible to corruption as any other bit in a SMBus packet. Hence, an ACK at the end of a PEC is not a guarantee that the PEC is correct. A controller-transmitter receiving an ACK at the end of a write should not necessarily assume that the write was successfully carried out at the target-receiver of the write, although it is highly likely that it was.

A NACK received after a PEC by a controller-transmitter indicates that the link layer of the target-receiver became aware of an error with the transmission in time to supply a NACK at the end of the PEC byte. This may be due to an incorrect PEC

System Management Bus (SMBus) Specification Version 3.2

or any other error. Errors discovered above the data link layer may also be indicated with a NACK if the device is fast enough to discover and indicate the error when the NACK is due.

An ACK received after a PEC by a controller-transmitter means that no error could be determined by the link layer in the target-receiver in time to supply a NACK. This might be because the receiver is not able to check the validity of the PEC in real time.

If a controller transmitter wants to be sure that a write-operation is performed correctly at the target device, it must use some higher-layer mechanism to verify this. This might take the form of a read-with-PEC of the data; receipt of a correct PEC would reliably indicate that that the original write occurred without error.

When a controller-receiver reads data from a target-transmitter, the ACK/NACK supplied by the controller-receiver at the end of the transaction has little meaning other than to mark the end of the last byte. The target-transmitter is supplying the data, and if the PEC supplied by the target-transmitter is correct, the controller-receiver may assume that the data was received as the target transmitted it. If not, it is up to the controller-receiver to take any appropriate remedial action.

6.4.1.2 Controller implementation

A controller may use PEC on any transaction. It is required that the controller have either a priori knowledge of whether or not the target device supports PEC or a way to determine whether the target device supports PEC. The use of PEC is governed by upper layer protocols (e.g. device drivers), specifications (e.g. requirements of the SMBus ARP protocol) or detection algorithms for a given class of devices (e.g. smart batteries).

6.4.1.3 Target implementation

A target device that implements Packet Error Checking must be prepared to receive and transmit data with or without a PEC. During a target receive transfer, after the device has identified the protocol and command, it must accept and check the additional PEC for validity.

During a target transmit transfer, the target transmitter must respond to additional clocks after the last byte transfer and furnish a PEC to the controller receiver requesting it.

Each bus transaction requires a Packet Error Code (PEC) calculation by both the transmitter and receiver within each packet. The PEC uses an 8-bit cyclic redundancy check (CRC-8) of each read or write bus transaction to calculate a Packet Error Code (PEC). The PEC may be calculated in any way that conforms to a CRC-8 represented by the polynomial, $C(x) = x^3 + x^2 + x^1 + 1$, and must be calculated in the order of the bits as received.

Calculating the PEC for transmission or reception is implemented in a method chosen by the device manufacturer. It is possible to perform the check with a low-cost hardware or a firmware algorithm that could process the message bit-by-bit or with a byte-wise look-up table. The SMBus web page provides some example CRC-8 methods.

The PEC is appended to the message as dictated by the protocols in Section 6.5. The PEC calculation includes all bytes in the transmission, including address, command and data. The PEC calculation does not include ACK or NACK

System Management Bus (SMBus) Specification Version 3.2

bits or START, STOP or REPEATED START conditions. This means that the PEC is computed over the entire message from the first START condition.

Whether a device implements packet error checking may be determined by the specification revision code that is present in the Specification Info() command for a Smart Battery, Smart Battery Charger or Smart Battery Selector. See these individual specifications for exact revision coding identities. It may also be discovered in the UDID, defined in Section 6.6.1, for other devices.

6.5 Bus Protocols

Following is a description of the various SMBus protocols with and without a Packet Error Code. Compliant devices need not support all the protocols defined in this section. The results returned by such a device to a protocol it does not support are undefined.

Table 1 shows the symbols used to create the protocol diagrams in this section. Not all protocol elements will be present in every command. For instance, not all packets are required to include the Packet Error Code.

A value shown within a field in the following diagrams is a mandatory value for that field.

The data formats implemented by SMBus are:

- Controller-transmitter transmits to target-receiver: The transfer direction in this case is not changed.
- Controller reads target immediately after the first byte: At the moment of the first acknowledgment (provided by the target-receiver) the controller-transmitter becomes a controller-receiver and the target-receiver becomes a target-transmitter.
- Combined format: During a change of direction within a transfer, the controller generates a REPEATED START condition and the target address but with the R/W# set to 1. In this case the controller receiver terminates the transfer by generating a NACK on the last byte of the transfer and a STOP condition.

Examples of these formats will be seen in the SMBus protocols below.

6.5.1 Quick Command

In the Quick Command the R/W# bit of the target address denotes the command. The R/W# bit may be used to simply turn a device function on or off, or enable/disable a low power standby mode. There is no data sent or received.

The Quick Command implementation is good for very small devices that have limited support for the SMBus specification. It also limits data on the bus for simple devices.

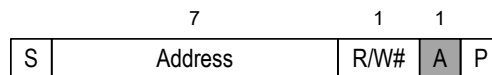


Figure 20: Quick Command protocol

6.5.2 Send Byte

A simple device may recognize its own target address and accept up to 256 possible encoded commands in the form of a byte that follows the target address.

System Management Bus (SMBus) Specification Version 3.2

All or parts of the Send Byte may contribute to the command. For example, the highest 7 bits of the command code might specify an access to a feature, while the least significant bit would tell the device to turn the feature on or off. Or, a device may set the “volume” of its output based on the value it received from the Send Byte protocol.

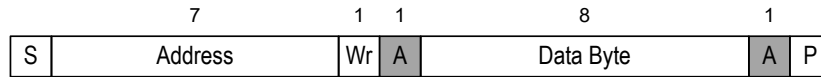


Figure 21: Send Byte protocol

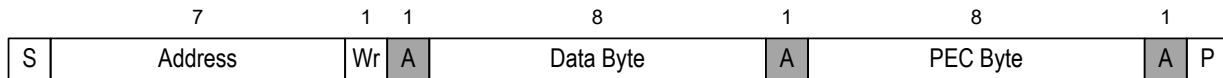


Figure 22: Send Byte protocol with PEC

6.5.3 Receive Byte

The Receive Byte is similar to a Send Byte, the only difference being the direction of data transfer. A simple device may have information that the controller needs. It can do so with the Receive Byte protocol. The same device may accept both Send Byte and Receive Byte protocols. A NACK (a ‘1’ in the ACK bit position) signifies the end of a read transfer.

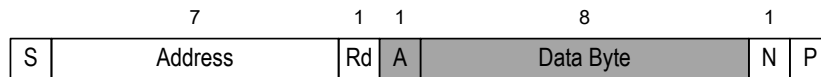


Figure 23: Receive Byte protocol

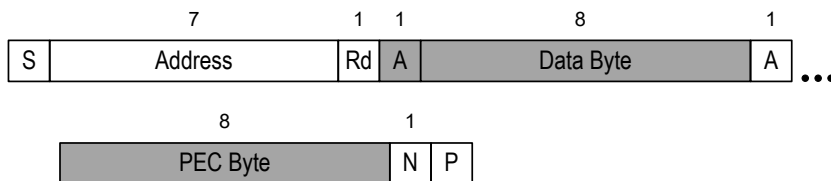


Figure 24: Receive Byte protocol with PEC

6.5.4 Write Byte/Word

The first byte of a Write Byte/Word access is the command code. The next one or two bytes, respectively, are the data to be written. In this example the controller sends the target device address followed by the write bit. The device acknowledges and the controller delivers the command code. The target again acknowledges before the controller sends the data byte or word (low byte first). The target acknowledges each byte, and the entire transaction is finished with a STOP condition.

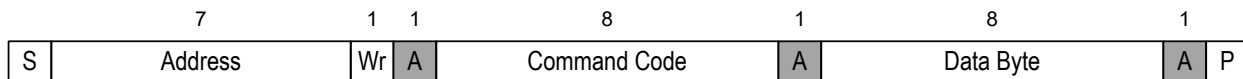


Figure 25: Write Byte protocol

System Management Bus (SMBus) Specification Version 3.2

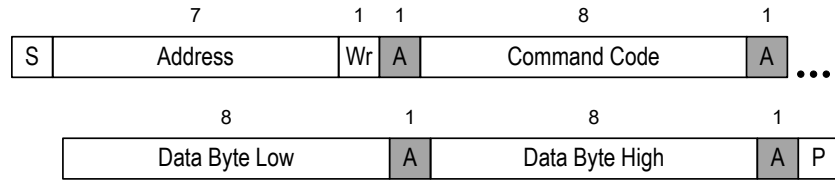


Figure 26: Write Word protocol

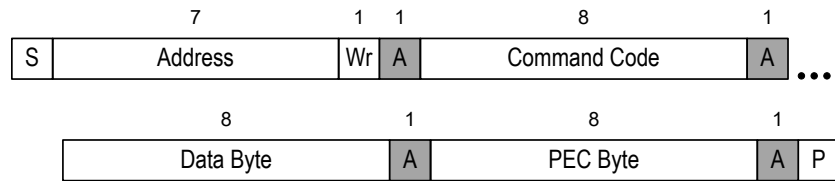


Figure 27: Write Byte protocol with PEC

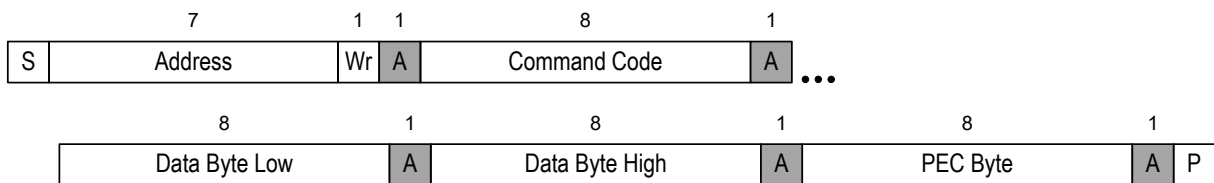


Figure 28: Write Word protocol with PEC

6.5.5 Read Byte/Word

Reading data is slightly more complicated than writing data. First the controller must write a command to the target device. Then it must follow that command with a repeated START condition to denote a read from that device's address. The target then returns one or two bytes of data.

Note that there is no STOP condition before the repeated START condition, and that a NACK signifies the end of the read transfer.

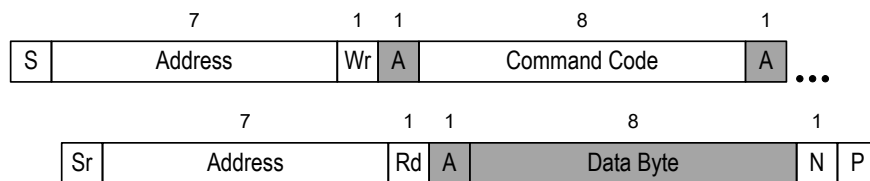


Figure 29: Read Byte protocol

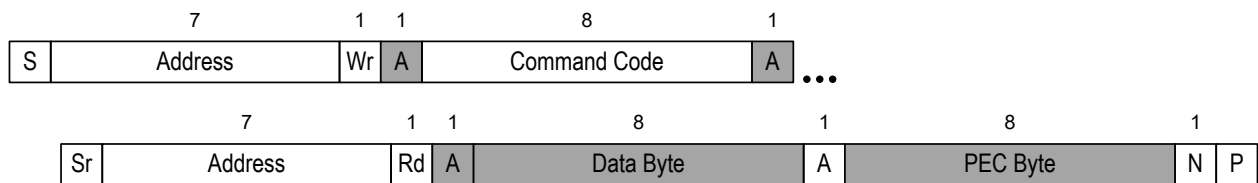


Figure 30: Read Byte protocol with PEC

System Management Bus (SMBus) Specification Version 3.2

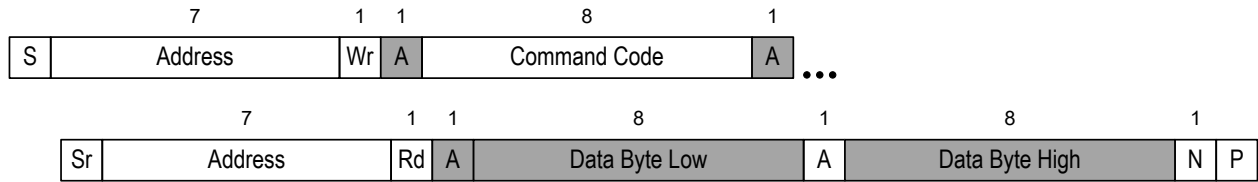


Figure 31: Read Word protocol

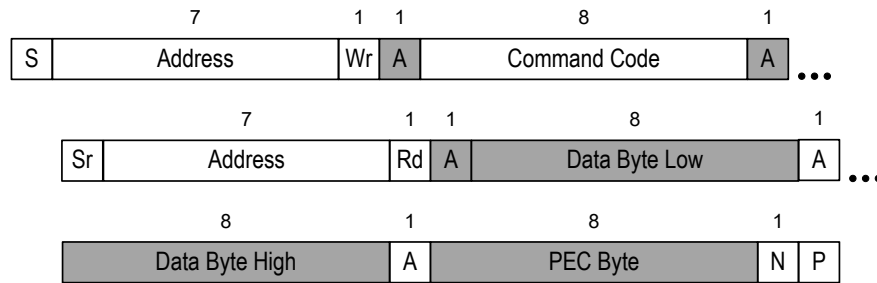


Figure 32: Read Word protocol with PEC

6.5.6 Process Call

The Process Call is so named because a command sends data and waits for the target to return a value dependent on that data. The protocol is simply a Write Word followed by a Read Word without the Read-Word command field and the Write-Word STOP bit.

Note that there is no STOP condition before the repeated START condition, and that a NACK signifies the end of the read transfer.

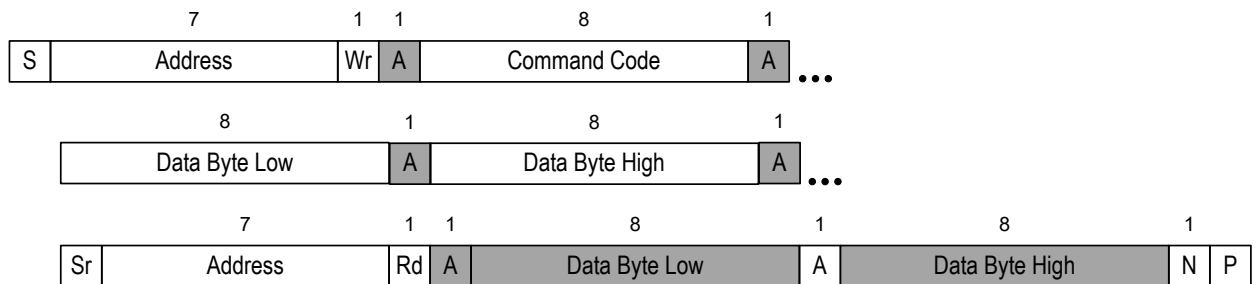


Figure 33: Process Call

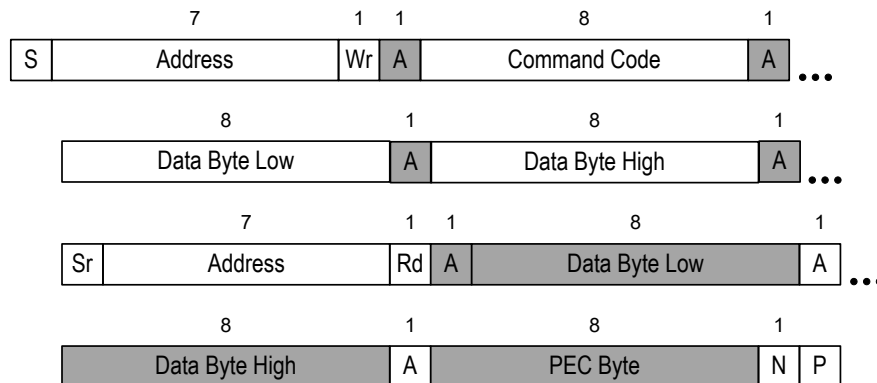


Figure 34: Process Call with PEC

System Management Bus (SMBus) Specification Version 3.2

6.5.7 Block Write/Read

The Block Write begins with a target address and a write condition. After the command code the controller issues a byte count which describes how many more bytes will follow in the message. If a target has 20 bytes to send, the byte count field will have the value 20 (14h), followed by the 20 bytes of data. The byte count does not include the PEC byte. The byte count may be 0. A Block Read or Block Write is allowed to transfer a maximum of 255 data bytes.

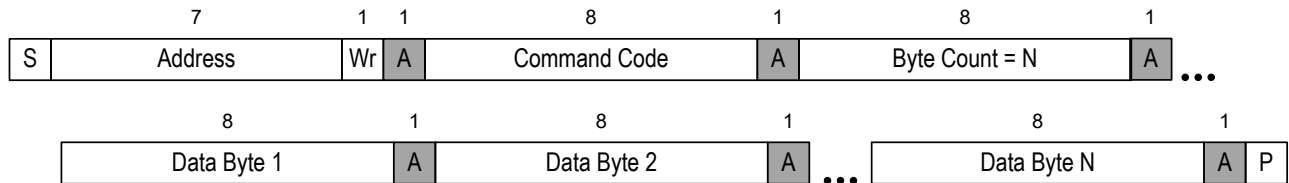


Figure 35: Block Write

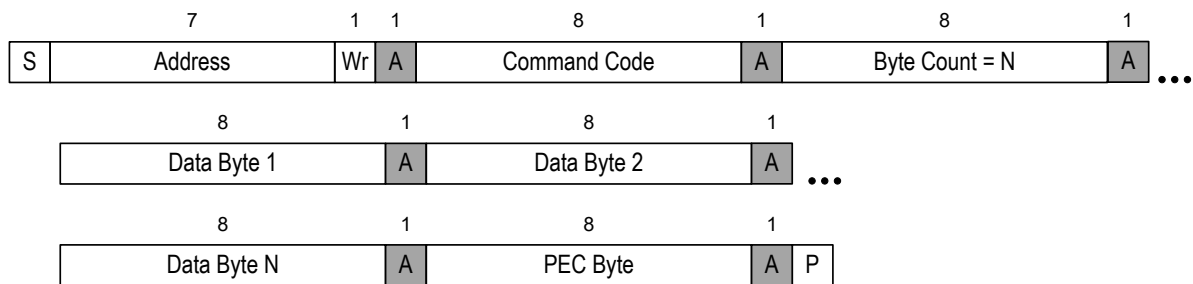


Figure 36: Block Write with PEC

A Block Read differs from a Block Write in that the repeated START condition exists to satisfy the requirement for a change in the transfer direction. A NACK immediately preceding the STOP condition signifies the end of the read transfer.

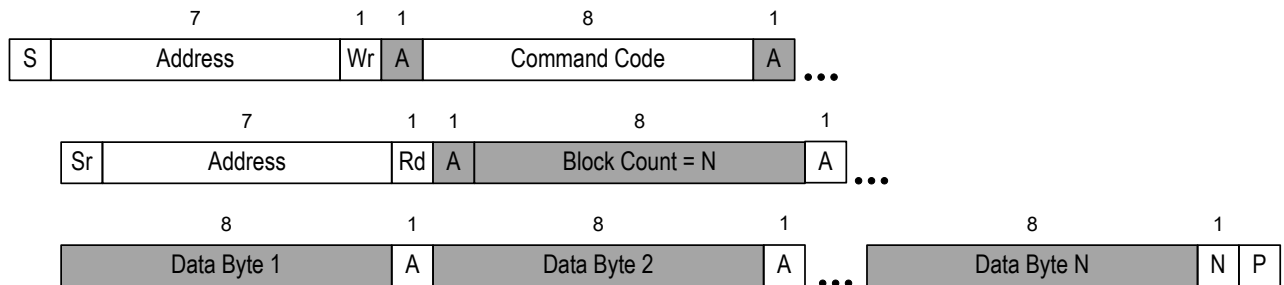


Figure 37: Block Read

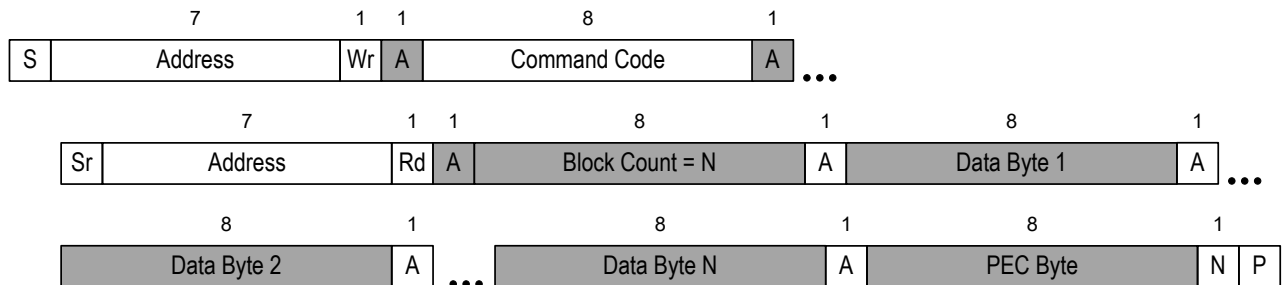


Figure 38: Block Read with PEC

System Management Bus (SMBus) Specification Version 3.2

6.5.8 Block Write-Block Read Process Call

The Block Write-Block Read Process Call is a two-part message. The call begins with a target address and a write condition. After the command code the controller issues a write byte count (M) that describes how many more bytes will be written in the first part of the message. If a controller has 6 bytes to send, the byte count field will have the value 6 (0000 0110b), followed by the 6 bytes of data. The write byte count (M) may be zero.

The second part of the message is a block of read data beginning with a repeated start condition followed by the target address and a Read bit. The next byte is the read byte count (N), which may differ from the write byte count (M). The read byte count (N) may be zero.

The combined data payload must not exceed 255 bytes. The byte length restrictions of this process call are summarized as follows:

- $M \geq 0$ byte
- $N \geq 0$ byte
- $M + N \leq 255$ bytes

The read byte count does not include the PEC byte. The PEC is computed on the total message beginning with the first target address and using the normal PEC computational rules. It is highly recommended that a PEC byte be used with the Block Write-Block Read Process Call.

Note that there is no STOP condition before the repeated START condition, and that a NACK signifies the end of the read transfer.

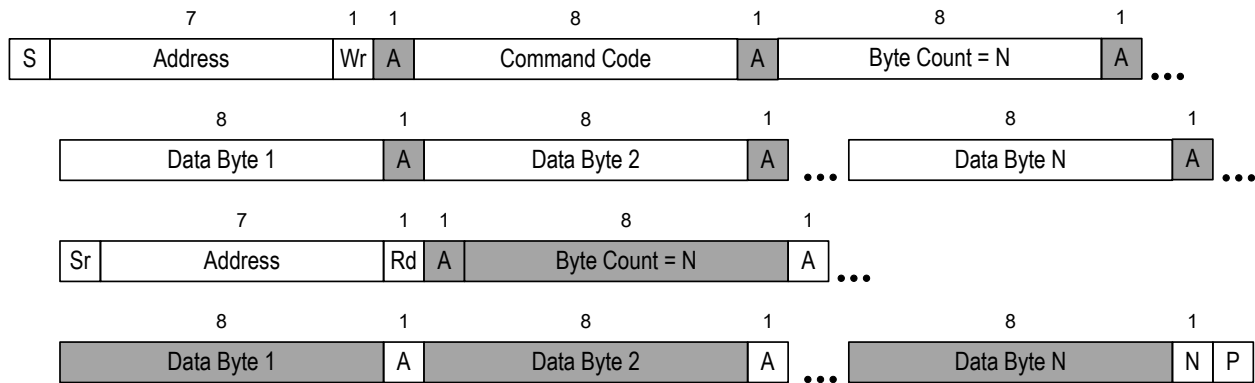


Figure 39: Block Write - Block Read Process Call

System Management Bus (SMBus) Specification Version 3.2

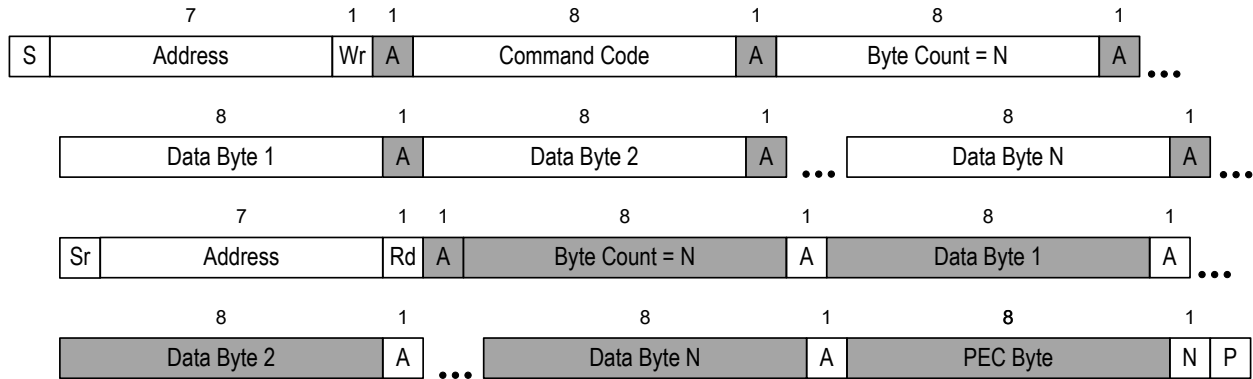


Figure 40: Block Write - Block Read Process Call with PEC

6.5.9 SMBus Host Notify protocol

To prevent messages coming to a SMBus Host from unknown devices in unknown formats only one method of communication is allowed, a modified form of the Write Word protocol. The standard Write Word protocol is modified by replacing the command code with the alerting device’s address. This protocol MUST be used when a SMBus device, which is normally a target, becomes a controller for this transaction in order to communicate with the SMBus Host (which acts as a target for this transaction).

Communication from a SMBus device to the SMBus Host begins with the SMBus Host address (0001 000b). The message’s Command Code is the initiating SMBus device’s address. From this, the SMBus Host knows the origin of the following 16 bits of device status. The contents of the status are device specific.

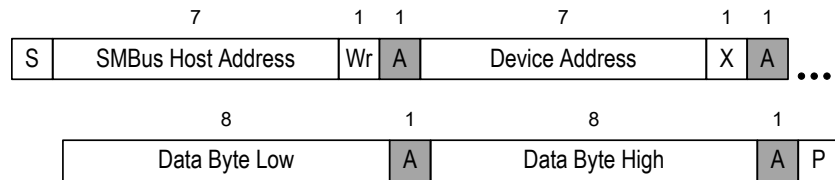


Figure 41: 7-bit Addressable Device to Host Communication

SMBus Hosts, as defined in Section 6.1.3, must support the SMBus Host Notify protocol. Hosts may implement the optional SMBALERT# line if devices in the system use it.

6.5.10 Write 32 protocol

The Write 32 protocol is used with commands that require sending to a target device up to 32 bits (4 bytes) of data.

This protocol can be used to send less than 32 bits but the packet must be padded to fill 32 bits. Data or meaningful bits are packed into the lower order bits and unused higher order bits are filled with zeros. For example, a 20 bit value is transmitted in bits [19:0] with the most significant bit in bit [19]. Bits [31:20] are all zeros.

System Management Bus (SMBus) Specification Version 3.2

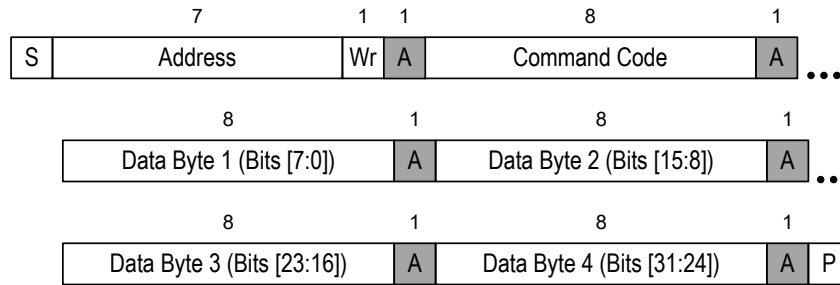


Figure 42: Write 32 Protocol

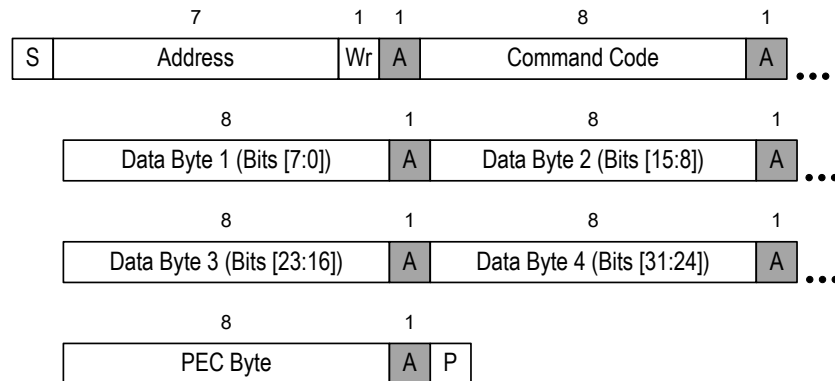


Figure 43: Write 32 Protocol With PEC

6.5.11 Read 32 protocol

The Read 32 protocol is used with commands that require reading up to 32 bits (4 bytes) of data from a target device.

This protocol can be used to read less than 32 bits but the packet must be padded to fill 32 bits. Data or meaningful bits are packed into the lower order bits and unused higher order bits are filled with zeros. For example, a 20 bit value is transmitted in bits [19:0] with the most significant bit in bit [19]. Bits [31:20] are all zeros.

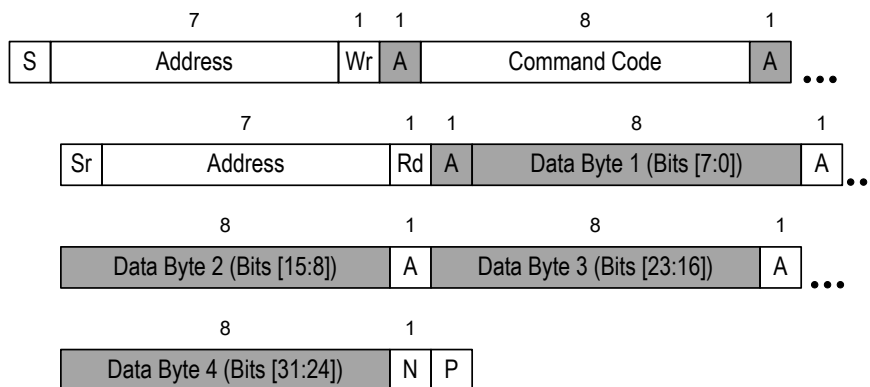


Figure 44: Read 32 Protocol

System Management Bus (SMBus) Specification Version 3.2

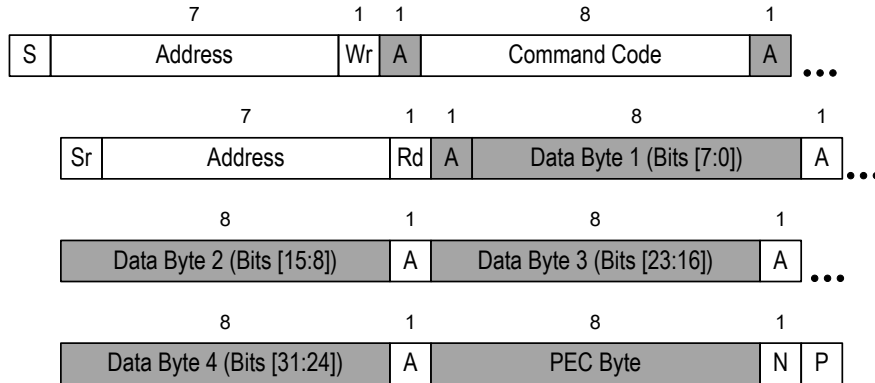


Figure 45: Read 32 Protocol With PEC

6.5.12 Write 64 protocol

The Write 64 protocol is used with commands that require sending to a target device up to 64 bits (8 bytes) of data.

This protocol can be used to send less than 64 bits but the packet must be padded to fill 64 bits. Data or meaningful bits are packed into the lower order bits and unused higher order bits are filled with zeros. For example, a 40 bit value is transmitted in bits [39:0] with the most significant bit in bit [39]. Bits [63:40] are all zeros.

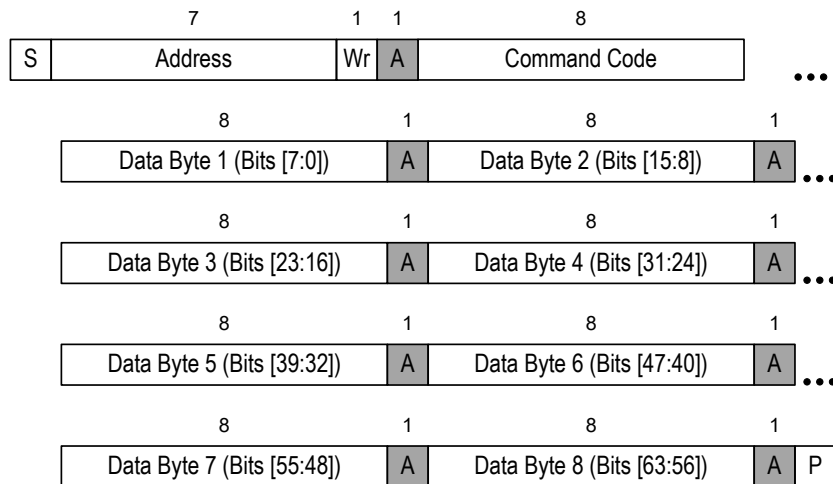


Figure 46: Write 64 Protocol

System Management Bus (SMBus) Specification Version 3.2

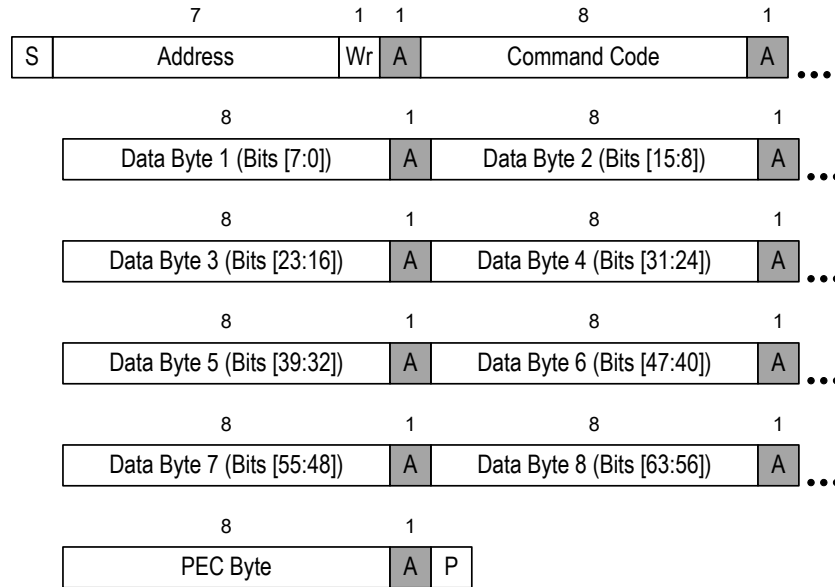


Figure 47: Write 64 Protocol With PEC

6.5.13 Read 64 protocol

The Read 64 protocol is used with commands that require reading up to 64 bits (8 bytes) of data from a target device.

This protocol can be used to send less than 64 bits but the packet must be padded to fill 64 bits. Data or meaningful bits are packed into the lower order bits and unused higher order bits are filled with zeros. For example, a 40 bit value is transmitted in bits [39:0] with the most significant bit in bit [39]. Bits [63:40] are all zeros.

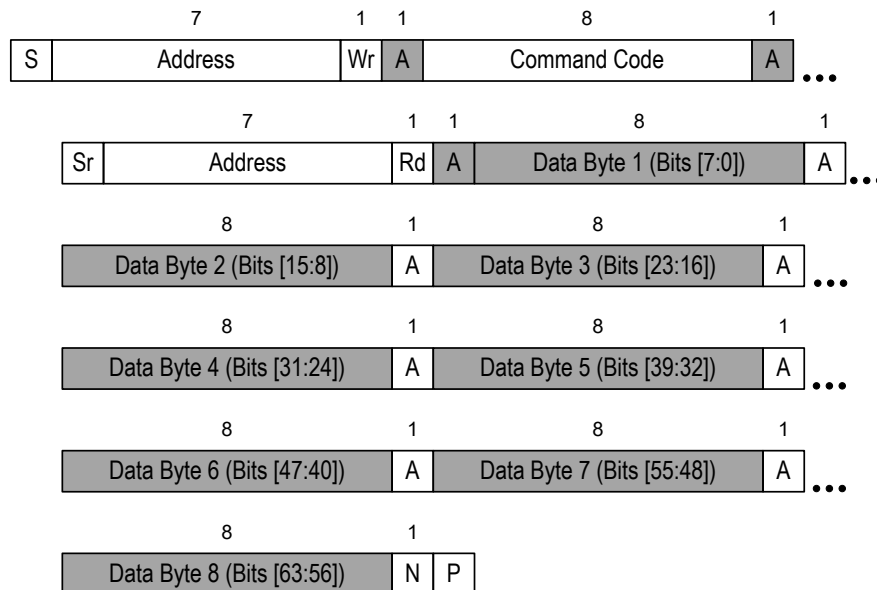


Figure 48: Read 64 Protocol

System Management Bus (SMBus) Specification Version 3.2

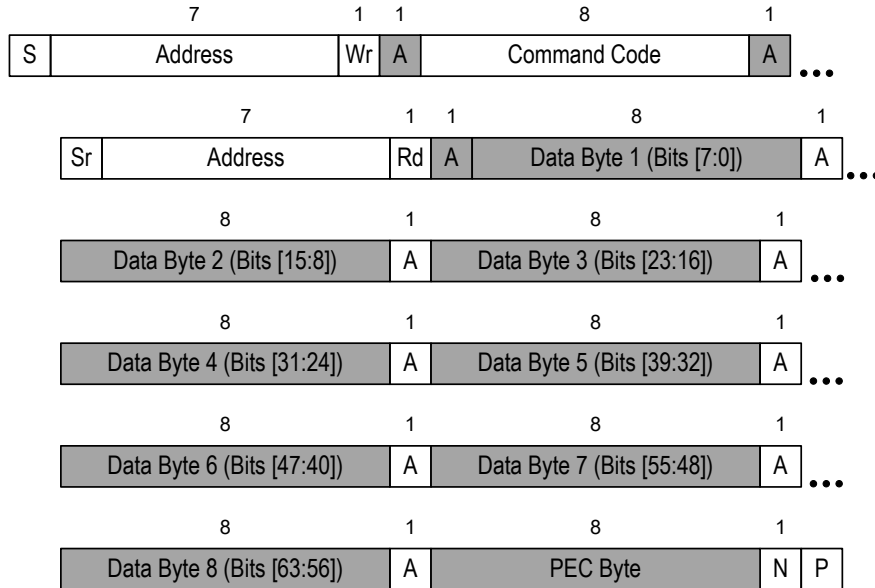


Figure 49: Read 64 Protocol With PEC

6.6 SMBus Address Resolution Protocol

SMBus target address conflicts can be resolved by dynamically assigning a new unique address to each target device. The Address Resolution Protocol (ARP) possesses the following attributes:

Address assignment utilizes the standard SMBus physical layer arbitration mechanism.

Assigned addresses remain constant while device power is applied; address retention through device power loss is also allowed.

No additional SMBus packet overhead is incurred after address assignment. (i.e. subsequent accesses to assigned target addresses have the same overhead as accesses to fixed address devices).

Any SMBus controller can enumerate the bus.

6.6.1 Unique Device Identifier (UDID)

In order to provide a mechanism to isolate each device for the purpose of address assignment each device must implement a unique device identifier (UDID). This 128-bit number is comprised of the following fields:

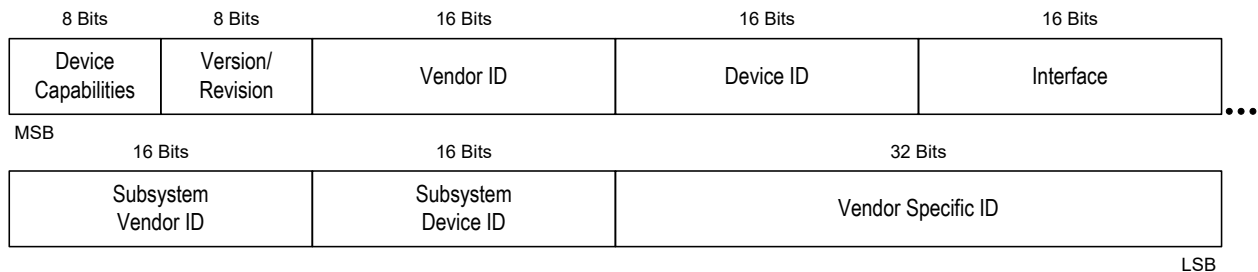


Figure 50: UDID

System Management Bus (SMBus) Specification Version 3.2

Table 5. UDID bit fields descriptions

Bits	Field	Description
[127:120]	Device Capabilities	Describes the device's capabilities. See detail below.
[119:112]	Version / Revision	UDID version number, and silicon revision identification. See detail below.
[111:96]	Vendor ID	The device manufacturer's ID as assigned by the SBS Implementers' Forum or the PCI SIG.
[95:80]	Device ID	The device ID as assigned by the device manufacturer (identified by the Vendor ID field).
[79:64]	Interface	Identifies the protocol layer interfaces supported over the SMBus connection by the device. For example, ASF and IPMI.
[63:48]	Subsystem Vendor ID	This field may hold a value derived from any of several sources: <ul style="list-style-type: none"> The device manufacturer's ID as assigned by the SBS Implementers' Forum or the PCI SIG. The device OEM's ID as assigned by the SBS Implementers' Forum or the PCI SIG. A value that, in combination with the Subsystem Device ID, can be used to identify an organization or industry group that has defined a particular common device interface specification.
[47:32]	Subsystem Device ID	The subsystem ID identifies a specific interface, implementation, or device. The Subsystem ID is defined by the party identified by the Subsystem Vendor ID field.
[31:0]	Vendor-specific ID	A unique number per device. See detail below.

6.6.1.1 Device capabilities field

The Device Capabilities field serves multiple purposes:

1. Reports generic SMBus capabilities.
2. Guarantees order of ARP resolution. Because a 'zero' bit wins arbitration over a '1' bit, and the Address Type bits are the first two bits presented when a device presents its UDID, all fixed address devices on the bus are detected during ARP first, followed by devices with dynamic and persistent addresses, and so on. The bits in the brackets below show the highest two bits, the address type field, within the Device Capabilities field:
 - [00] Fixed Address devices are identified first.
 - [01] Dynamic and Persistent Address devices are identified next.
 - [10] Dynamic and Volatile Address devices are identified next.
 - [11] Random Number devices are identified last.

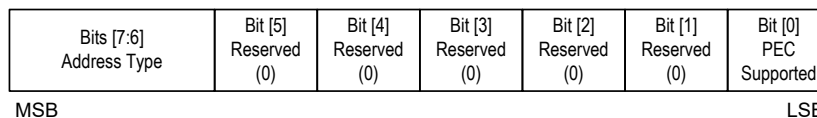


Figure 51: 8-bit device capabilities field

System Management Bus (SMBus) Specification Version 3.2

Table 6: 8-bit device capabilities field descriptions

Bit(s)	Field	Description
[7:6]	Address Type	These two bits describe the type of address contained in the device: 00b Fixed Address device 01b Dynamic and persistent address device 10b Dynamic and volatile address device 11b Random number device
[5:1]	Reserved	Reserved bits are for future extendibility and must be returned as 0b and ignored when read.
[0]	PEC Supported	This bit is set if the device supports Packet Error Code on all commands supported at the device's SMBus address associated with this UDID. If this bit is not set, the ability of the device to support PEC is unknown.

6.6.1.2 Version/Revision field

The version/revision field serves multiple purposes:

1. Identifies a UDID version to allow for future extendibility.
2. Identifies the silicon revision level.

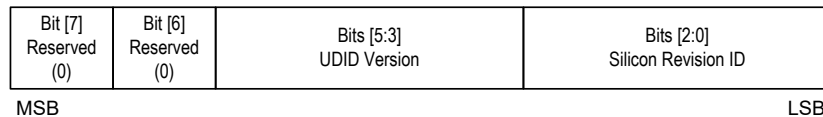


Figure 52: Version/Revision field

Table 7: Version/Revision bit fields description

Bit(s)	Field	Description
[7:6]	Reserved	Reserved bits are for future extendibility and must be a 0b.
[5:3]	UDID Version	These bits define the UDID version as defined here: 000b Reserved 001b UDID version 1 (defined for SMBus 2.0 release) 010b – 111b Reserved for future use It is expected that the version will increment as the bit definitions or protocols in this section change
[2:0]	Silicon Revision ID	These bits are used to designate the silicon revision level. The vendor determines this value. The vendor is encouraged to increment this value when silicon changes are made that will/might affect the software interface (e.g. new features, changed interface, etc.). In the event that all 8 encoded values are exhausted, the vendor is encouraged to use a different Device ID for the next revision.

6.6.1.3 Interface

The Interface field defines the SMBus version and the Interface Protocols supported.

System Management Bus (SMBus) Specification Version 3.2

The most significant bits of the Interface field are used to identify the protocols supported by the device. The least significant nibble is used to identify the SMBus version.

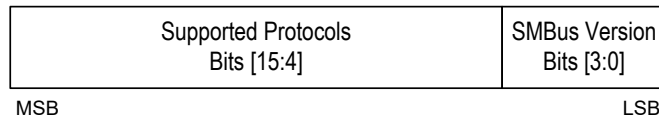


Figure 53: Interface field

Table 8: Interface field bit fields description

Bit(s)	Field	Description																
[15:8]	Reserved	Reserved for future definition under the SMBus specifications																
[7]	ZONE	Device supports ZONE WRITE and ZONE READ protocols																
[6]	IPMI	Device supports additional interface access and capabilities per IPMI specifications																
[5]	ASF	Device supports additional interface access and capabilities per ASF specifications																
[4]	OEM	<p>Device supports vendor-specific access and capabilities per the Subsystem Vendor ID and Subsystem Device ID fields returned by discoverable SMBus devices.</p> <p>The Subsystem Vendor ID identifies the vendor or defining body that has specified the behavior of the device. The Subsystem Device ID is used in conjunction with the System Vendor ID to specify a particular level of functional equivalence for the device.</p>																
[3:0]	SMBus Version	<p>These bits define the SMBus version as defined here:</p> <table style="width: 100%; border: none;"> <tr><td style="padding-left: 20px;">0000b</td><td>SMBus 1.0 – do not use in ARPable devices</td></tr> <tr><td style="padding-left: 20px;">0001b</td><td>SMBus 1.1– do not use in ARPable devices</td></tr> <tr><td style="padding-left: 20px;">0010b</td><td>Reserved</td></tr> <tr><td style="padding-left: 20px;">0011b</td><td>Reserved</td></tr> <tr><td style="padding-left: 20px;">0100b</td><td>SMBus Version 2.0</td></tr> <tr><td style="padding-left: 20px;">0101b</td><td>SMBus Version 3.0</td></tr> <tr><td style="padding-left: 20px;">0110b</td><td>SMBus Version 3.1</td></tr> <tr><td style="padding-left: 20px;">0111b</td><td>SMBus Version 3.2</td></tr> </table> <p>All other values reserved</p>	0000b	SMBus 1.0 – do not use in ARPable devices	0001b	SMBus 1.1– do not use in ARPable devices	0010b	Reserved	0011b	Reserved	0100b	SMBus Version 2.0	0101b	SMBus Version 3.0	0110b	SMBus Version 3.1	0111b	SMBus Version 3.2
0000b	SMBus 1.0 – do not use in ARPable devices																	
0001b	SMBus 1.1– do not use in ARPable devices																	
0010b	Reserved																	
0011b	Reserved																	
0100b	SMBus Version 2.0																	
0101b	SMBus Version 3.0																	
0110b	SMBus Version 3.1																	
0111b	SMBus Version 3.2																	

Note: The values 0000b and 0001b in the SMBus Version field (bits [3:0]) support use of the UDID definition in other specifications.

6.6.1.4 SubSystem IDs

The SubSystem Vendor ID can be specified as 0000h if the SubSystem fields are unsupported. If the SubSystem Vendor ID is 0000h, the SubSystem Device ID must also be 0000h. These fields may not be supported for inexpensive or generic type sensors that do not require subsystem identification/differentiation. If these fields are supported, it is required that the values be stored in some form of non-volatile storage.

System Management Bus (SMBus) Specification Version 3.2

6.6.1.5 Vendor-specific ID

This field is used to provide a unique ID for functionally equivalent devices. This is for devices that would otherwise return identical UDIDs for the purpose of address assignment. This field is defined by the device manufacturer (as specified by the Vendor ID field) who may employ a central numbering scheme or a random number scheme for dynamic address devices. The data in this field is irrelevant for devices that do not support dynamic addressing.

The rules of this field are stated here for clarity:

1. Devices that support an assigned device address must support a unique ID in this field.
2. If a pre-assigned unique ID is used, at least 16-bits must be unique. However, a 32-bit pre-assigned unique ID is recommended.
3. If a random number is implemented in this field, Random Number Requirements must be met.
4. Devices that support a fixed device address must still implement this field but not uniquely.

Uniqueness is important to guarantee that two like devices are identified discretely. It is the responsibility of the device/system manufacturer to determine the possibility of like devices, and the mechanism for providing uniqueness via the UDID and target address fields.

6.6.1.6 Random number requirements

If a random number is utilized the following requirements must be met:

1. It must be at least 16 bits in length.
2. The device is not allowed to support a persistent target address.
3. The device is not allowed to support fixed addresses. (If the device has a fixed address mode, the Vendor Specific ID should be a constant, and therefore not random – this is required to guarantee that the SMBus ARP resolution order is maintained)
4. The random number must be retained while the device has power, with the exceptions described in items 5 and 6.
5. The random number must be regenerated when the device receives the Reset Device command.
6. The random number must be regenerated when the device senses a bus collision during a read operation directed to its Assigned Target Address. When this happens, the device must issue a SMBus Host Notify protocol if the device supports it.

6.6.2 Power-on reset

Power-on reset is described in section 4.3.5.2. In the case of ARP-capable devices, 'operational state' implies the ability to respond to ARP commands as required in this section.

Each target device must fit into only one of these categories and must obey the power on reset state:

System Management Bus (SMBus) Specification Version 3.2

Table 9: Internal state of ARP-capable devices on Power-On Reset

Device Type	AR Flag	AV Flag	SMB Address	UDID
PTA (Persistent Target Address)	CLEAR	Read from NVR	Read from NVR; undefined if AV Flag is CLEAR	NO CHANGE
Non-PTA / Non-Random Number	CLEAR	CLEAR	undefined	NO CHANGE
Non-PTA / Random Number	CLEAR	CLEAR	undefined	Generate Random Number
DTA (Default Target Address)	CLEAR	SET	Default, read from ROM	NO CHANGE

6.6.3 ARP commands

The ARP Controller can issue general commands and directed commands. A general command is targeted at all devices and is required for the address resolution process. A directed command is targeted at a single device. All packets originated by the ARP Controller use Packet Error Checking (See Section 6.4) and begin with the basic format:

<SMBus Device Default Address> <command>

Table 10: ARP command number scheme

<SMBus Device Default Address><command>	<p>1100 001b (the R/W# bit completes the byte)</p> <p><u>General</u> (00h through 1Fh)</p> <p>00h = Reserved 01h = Prepare to ARP 02h = Reset Device (general) 03h = Get UDID (general) 04h = Assign Address 05h = Reserved</p> <ul style="list-style-type: none"> • • • <p>1Fh = Reserved</p> <p><u>Directed</u></p> <ul style="list-style-type: none"> • Odd numbered commands denote Get UDID from a specific target and are of the form yyyy yyy1b where yyyy yyyb is the 7-bit address of the targeted device. For example, a command of 21h is a directed Get UDID to target address 0010 000b. • Even numbered commands denote Reset Device to a specific target and are of the form yyyy yyy0b where yyyy yyyb is the 7-bit address of the targeted device. For example, a command of 5Ch is a directed Reset Device to target address 0101 110b. • Values of FEh and FFh are reserved
---	---

An ARP Enumerator is allowed to issue the “Prepare to ARP”, “Get UDID” (general and directed), and “Assign Address” commands; it is not allowed to issue the

System Management Bus (SMBus) Specification Version 3.2

Reset Device commands. It must execute the “Assign Address” command for each device in the general “Get UDID” command using the same address that is returned by the “Get UDID” command. A SMBus Enumerator is not allowed to re-assign addresses and it is not allowed to assign an address to a device with an invalid/uninitialized address.

Devices can optionally support the “Notify ARP Controller” command that is used to notify the ARP Controller that the device requires address resolution. If the ARP Controller supports this command, it must respond as a target to this command and provide a software indication that the ARP needs to be executed.

6.6.3.1 Device categorization

SMBus devices are categorized as given in Table 11.

Table 11: SMBus device characterizations

Field	Description
ARP-capable	Device supports all ARP commands with the exception of the optional Host Notify command. Target address is assignable. Device supports both Reset commands.
Fixed and Discoverable	Device supports the Prepare to ARP, directed Get UDID, general Get UDID and Assign Address commands. Target address is fixed; device will accept the Assign Address command but will not allow address reassignment. Device supports both Reset commands.
Fixed, not Discoverable	Device supports the directed Get UDID command. Target address is fixed.
Non-ARP-capable	Device does not support any ARP commands. Target address is fixed.

6.6.3.2 Prepare to ARP

Action: always ACK/PROCESS

AR Flag: CLEAR

AV Flag: NO CHANGE

This command informs all devices that the ARP Controller is starting the ARP process. All ARP-capable devices must acknowledge all bytes in this SMBus packet and clear their Address Resolved (AR) flag. They must also cancel any pending “Notify ARP Controller” commands. If the ARP Controller detects that any of the bytes have not been acknowledged then it can assume that there are no ARP-capable devices present on the bus. Retries are recommended in case bus noise causes an erroneous NACK.

This command utilizes the standard SMBus Send Byte Protocol with PEC as illustrated below.

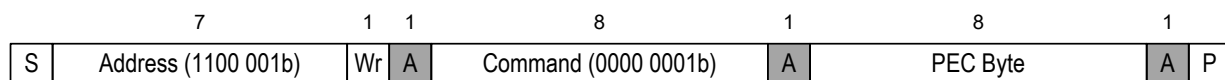


Figure 54: Prepare to ARP command

System Management Bus (SMBus) Specification Version 3.2

6.6.3.3 Reset device (general)

Action: always ACK/PROCESS

AR Flag: CLEAR

AV Flag: if (non-PTA) then CLEAR; if (DTA) then SET; else NO CHANGE

This command forces all non-PTA, ARP-capable devices to return to their initial state. That is, they must clear their AR (Address Resolved) and AV (Address Valid) flags; those devices that support the Persistent Target Address must clear their AR flag. The DTA devices must assume their Default Target Addresses and clear their AR flag. An ARP-capable device that implements a random number as part of its UDID must regenerate its random number upon receipt of this command. All ARP-capable devices must acknowledge all bytes in this SMBus packet. If the ARP Controller detects that any of the bytes have not been acknowledged then it can assume that there are no ARP-capable devices present on the bus.

This reset is just for the ARP functions, and is not intended as a general device reset.

This command utilizes the standard SMBus Send Byte Protocol with PEC as illustrated below.

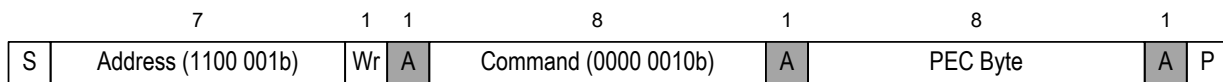


Figure 55: Reset device command

6.6.3.4 Get UDID (general)

Action: if (AR = 0) then ACK/PROCESS; else NACK/REJECT.

AR Flag: NO CHANGE

AV Flag: NO CHANGE

This command requests ARP-capable and/or Discoverable devices to return their target address along with their UDID. If the ARP Controller detects that any of the first three bytes have not been acknowledged then it can assume that there are no ARP-capable or Discoverable devices present on the bus or all ARP-capable devices have valid assigned target addresses.

This command utilizes the standard SMBus Block Read Protocol with PEC as illustrated below.

NOTES

- Bit 0 (LSB) in the Data17 field must be returned as 1b.
- If a device has its AV flag clear then it must return 1111 111b for the remaining bits in the Data17 field.

System Management Bus (SMBus) Specification Version 3.2

8. The target device only ACKs the PEC byte if it matches the value calculated on data it received, if not it must NACK the PEC byte AND ignore the “Assign Address” command. This behavior allows the ARP Controller to determine that the target device successfully accepted the address without any further bus activity.

This command utilizes the standard SMBus Block Write Protocol with PEC as illustrated below.

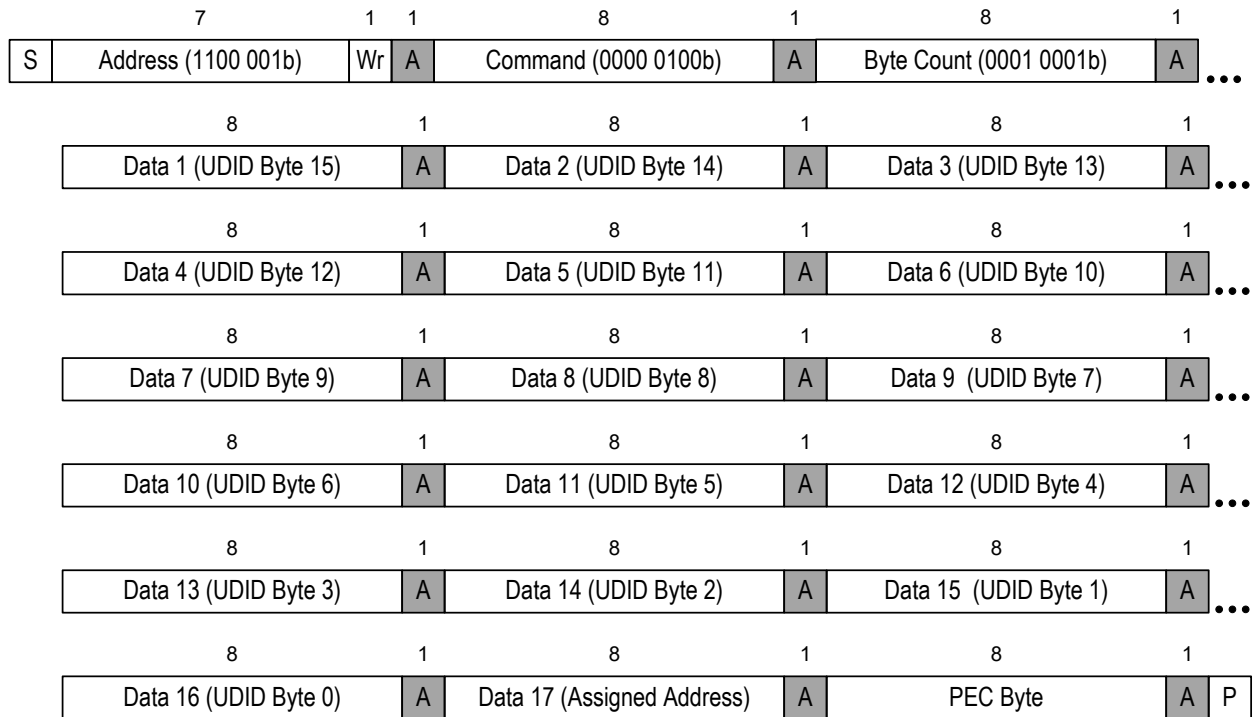


Figure 57: Assign address command

6.6.3.6 Get UDID (directed)

Action: if (AV = 1) then ACK/PROCESS; else NACK/REJECT.

AR Flag: NO CHANGE

AV Flag: NO CHANGE

This command requests a specific ARP-capable device to return its Unique Identifier. If the ARP Controller detects that any of the first three bytes have not been acknowledged then it can assume that no ARP-capable device is present at the targeted device address.

This command utilizes the standard SMBus Block Read Protocol with PEC as illustrated below.

NOTES

Bit 0 (LSB) in the Data17 field must be returned as 1b.

System Management Bus (SMBus) Specification Version 3.2

6.6.3.8 Notify ARP Controller

A device may use this command to notify the ARP Controller that the device requires address resolution. The device may execute this command under the following circumstances:

- Device power up
- When the device senses a bus collision during a read operation directed to its Assigned Target Address.

This command utilizes the standard SMBus Host Notify protocol to communicate with the Host (at the SMBus Host Address as defined in Table 17 in Appendix C) as illustrated below).

Note: The value of 0000h in the data field means that the device wishes to be ARPed. All other values are reserved for future use.

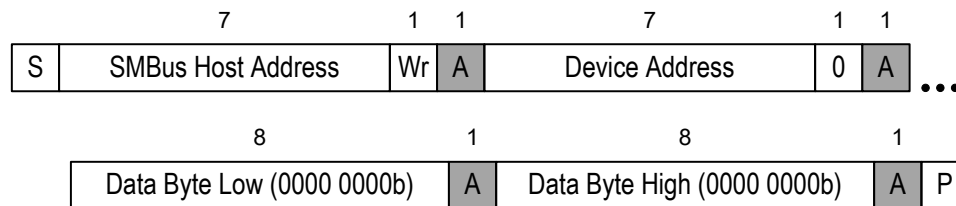


Figure 60: Notify ARP Controller command

6.6.3.9 Implementation notes

A SMBus ARP Controller in a Hot Plug System will typically not require the Host Notify command as it gets asynchronous indication of a device added or removed via other means, though there's no restriction in this specification against using this notification in those types of applications.

A mobile system that has addition and removal of devices on the SMBus can benefit from this command if the SMBus ARP Controller and the removable devices support this command. (Note, there could be one device in the system that performs the notify on behalf of other devices. System software must always run the FULL ARP process.)

6.6.3.10 ARP execution

The ARP Controller must always execute the ARP when it enters the working state and anytime it receives a SMBus status change indication (device added or removed – e.g. hot plug). The process begins with the ARP Controller issuing the “Prepare To ARP” command. In all cases the ARP Controller must be able to resolve addresses when it receives the “Notify ARP Controller” command.

If the possibility exists that SMBus devices may join the system without a corresponding system reset (for example in hot-plug-capable systems), the ARP Controller may optionally choose to issue the Get UDID (General) command at least once every 10 seconds in order to discover newly added devices that require address resolution but that don't support the “Notify ARP Controller” command. No device whose AR flag is clear will respond to this command. However, a newly added device will enter the system with a power-on reset, which will reset its AR flag. It will respond to a Get UDID (General) command with its UDID. The ARP Controller may choose to assign such a newly added device a non-conflicting address or it may choose to re-ARP the entire bus.

System Management Bus (SMBus) Specification Version 3.2

The ARP Controller or any other SMBus controller can perform device “discovery” or “enumeration” by executing a subset of the ARP. This is accomplished by issuing the “Prepare To ARP” command followed by repeatedly issuing the general “Get UDID” and “Assign Address” commands until no device acknowledges. Until the ARP process is complete the ARP Controller must not wait more than two seconds before issuing a general “Get UDID” command after issuing the previous general “Get UDID” command. This restriction is important to allow another SMBus controller to determine when it is safe to do an enumeration of the bus.

6.6.3.11 ARP Controller behavior

Referring to the flow diagram in Figure 61 the ARP Controller operates as follows:

1. Upon starting, the ARP Controller will initialize its Used Address Pool. Initially this will consist of the target addresses of fixed SMBus devices known to the ARP Controller and reserved addresses (as defined in Appendix C).
2. Send the “Prepare To ARP” command.
3. Check for an acknowledgement for all bytes in the previous packet. If any bytes were not acknowledged then the ARP Controller can assume that no ARP-capable devices are present and may therefore consider the ARP process complete and proceed to step 4. If all bytes were acknowledged then go to step 6.
4. The ARP Controller found no response to the “Prepare To ARP” command so it can assume that no ARP-capable devices are present in the system at this time. The ARP Controller may periodically re-issue the “Prepare To ARP” command to discover any ARP-capable devices added. Proceed to step 5.
5. Wait for a SMBus packet. If a packet is received proceed to step 15.
6. Send the “Get UDID” command.
7. Check for an acknowledgement for the first three bytes and verify that the byte count value received is 11h. If not, then the ARP Controller can assume that an ARP-capable device(s) is no longer present and may therefore consider the ARP process complete and Proceed to step 4. Otherwise proceed to step 8.
8. Check the value of the Device Target Address received. If FFh then proceed to step 11 since this device does not possess a valid target address. Otherwise proceed to step 9.
9. Determine if this device has a fixed target address. If bits 127 and 126 of the UDID are 00b then it has a fixed address, so proceed to step 12. Otherwise proceed to step 10.
10. The device possesses a valid target address. However, the ARP Controller must check this address against the Used Address Pool to insure that no other device has already been assigned the same address. If the received Device Target Address is found in the Used Address Pool then proceed to step 11. If not, then the device can keep its current target address but needs acknowledgement from the ARP Controller so proceed to step 12.
11. Select a target address that is not in the Used Address Pool and proceed to step 12.

System Management Bus (SMBus) Specification Version 3.2

12. Send the “Assign Address” command with the UDID returned by the device in the “Get UDID” command packet.
13. Check for acknowledgement of all bytes in the “Assign Address” command packet. If any byte was not acknowledged then the ARP Controller assumes the device is no longer present; proceed to step 6 to determine if there are more devices requiring address resolution. If all bytes were acknowledged then the ARP Controller assumes that the device has accepted the address assignment; proceed to step 14.
14. The device now has a valid target address. The ARP Controller must add this address to the Used Address Pool. Proceed to step 6 to determine if there are more devices requiring address resolution.
15. The ARP Controller checks to see if the received packet was the “Notify ARP Controller” command. If so, then it must execute the ARP to resolve the address for the newly added device(s); proceed to step 6. If not, then proceed to step 16.
16. The ARP Controller received a non-ARP related packet. Process it accordingly and proceed to step 5.

The ARP Controller behavior flow diagram covers the case when the ARP Controller has come out of a reset state. The ARP supports “hot-plug” devices so the ARP Controller must be prepared to execute the ARP at any time; step 15 covers the case when a device issues the “Notify ARP Controller” command. Since that command is optional the ARP Controller cannot rely on a notification from the device upon its appearance on the SMBus. As such the ARP Controller should periodically issue the “Prepare To ARP” command if the SMBus implementation supports “run-time” device addition. Doing so will also allow the ARP Controller to determine if any ARP-capable devices have been removed from the SMBus. In this case the ARP Controller can remove addresses from the Used Address Pool if it doesn’t detect a response from a device previously assigned an address.

System Management Bus (SMBus) Specification Version 3.2

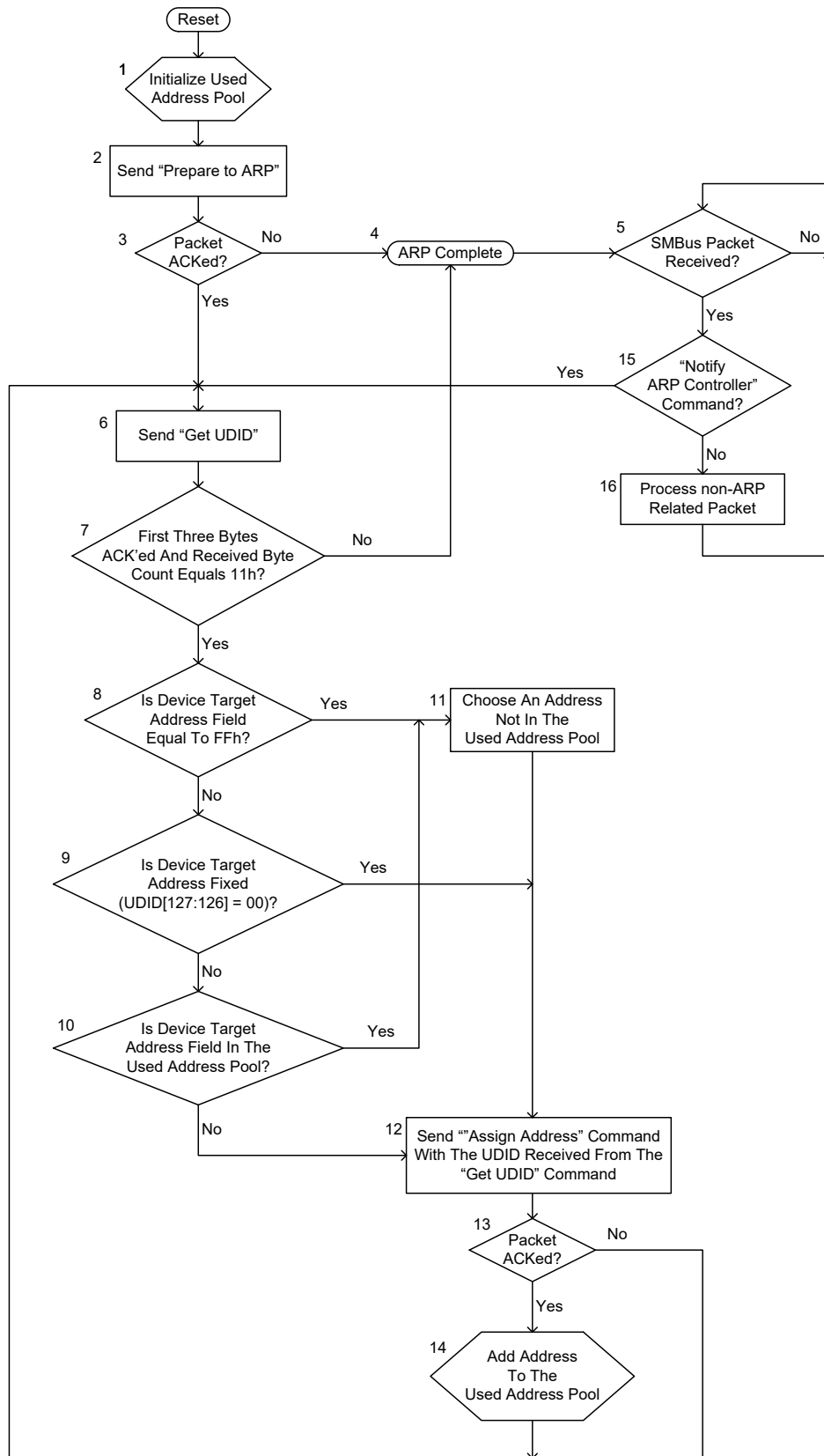


Figure 61: ARP Controller behavior flow diagram

System Management Bus (SMBus) Specification Version 3.2

The flow diagram also does not cover consideration for bus timeout mechanisms or retries. These should be implemented in order to comply with the bus timing specifications.

6.6.3.12 ARP-capable device behavior

Referring to the flow diagram in Figure 62 an ARP-capable device operates as follows:

1. After exiting the power on reset state, a device that supports the Persistent Target Address (PTA) or Default Target Address (DTA) will go to step 2 to see if it is valid. Otherwise, it will proceed to step 5.
2. A device must check its Address Valid flag which is a non-volatile. If that flag is set then it has a valid target address and proceeds to step 4. If the Address Valid flag is cleared then it must proceed to step 3.
3. Although the device supports the PTA the value is currently invalid. The device must clear the Address Resolved flag indicating that it has not had its target address assigned. Proceed to step 6.
4. The device has a valid target address in NVR or ROM so it assumes that target address for now. However, this address has not been resolved by the ARP Controller so the device must clear its Address Resolved flag. Proceed to step 6.
5. The device does not support the PTA so it must clear its Address Valid and Address Resolved flags. Proceed to step 6.
6. If supported, the device will send the “Notify ARP Controller” command. This will inform the ARP Controller that a new device is present. Proceed to step 7.
7. The device waits for a SMBus packet.
8. Upon receipt of a SMBus packet the device must first check the received target address against the SMBus Device Default Address. If there is a match then it proceeds to step 12, otherwise it proceeds to step 9.
9. The received address is not the SMBus Device Default Address so the packet is potentially addressed to the device’s core function. The device must check its Address Valid bit to determine whether or not to respond. If the Address valid bit is set then it proceeds to step 10, otherwise it must return to step 7 and wait for another SMBus packet.
10. Since the device has a valid target address it must compare the received target address to its target address. If there is a match then it proceeds to step 11, otherwise it must return to step 7 and wait for another SMBus packet.
11. The device has received a packet addressed to its core function so it acknowledges the packet and processes it accordingly. Proceed to step 7 and wait for another SMBus packet.
12. The device detected a packet addressed to the SMBus Device Default Address. It must check the command field to determine if this is the “Prepare To ARP” command. If so, then it proceeds to step 13, otherwise it proceeds to step 14.
13. Upon receipt of the “Prepare To ARP” command the device must acknowledge the packet and make sure its Address Resolved flag is clear in order to participate in the ARP process. Proceed to step 7 and wait for another SMBus packet.

System Management Bus (SMBus) Specification Version 3.2

14. The device checks the command field to see if the “Reset Device” command was issued. If so, then it proceeds to step 15, otherwise it proceeds to step 16.
15. Upon receipt of the “Reset Device” command the device must acknowledge the packet and make sure its Address Valid and Address Resolved flags are set or cleared as shown in Table 9. This will allow the ARP Controller to re-assign all device addresses without cycling power. Proceed to step 7 and wait for another SMBus packet.
16. The device checks the command field to see if the “Assign Address” command was issued. If so, then it proceeds to step 17, otherwise it proceeds to step 19.
17. Upon receipt of the “Assign Address” command the device must compare its UDID to the one it is receiving. If any byte does not match then it must not acknowledge that byte or subsequent ones. If all bytes in the UDID compare then the device proceeds to step 18, otherwise it must return to step 7 and wait for another SMBus packet.
18. Since the UDID matched, the device must assume the received target address and update its PTA, if supported. DTA devices store address in volatile storage that is reset to Default Target Address after device power-on reset. The device must set its Address Valid and Address Resolved flags that means it will no longer respond to the “Get UDID” command unless it receives the “Prepare To ARP” or “Reset Device” commands or is power cycled. Proceed to step 7 and wait for another SMBus packet.
19. The device checks the command field to see if the “Get UDID” command was issued. If so, then it proceeds to step 21, otherwise it proceeds to step 20.
20. The device may be receiving a directed command. Directed commands must only be acknowledged by targets with a valid address. If the address is not valid then ignore the packet and return to step 7 and wait for another SMBus packet. If the address is valid then proceed to step 26.
21. Upon receipt of the “Get UDID” command the device must check its Address Resolved flag to determine whether or not it should participate in the ARP process. If set then its address has already been resolved by the ARP Controller so the device proceeds to step 7 to wait for another SMBus packet. If the AR flag is cleared then the device proceeds to step 22.
22. The device returns its UDID and monitors the SMBus data line for collisions. If a collision is detected at any time the device must stop transmitting and proceed to step 7 and wait for another SMBus packet. If no collisions were detected then proceed to step 23.
23. The device must now check its Address Valid flag to determine what value to return for the Device Target Address field. If the AV flag is set then it proceeds to step 24, otherwise it proceeds to step 25.
24. The current target address is valid so the device returns this for the Device Target Address field (with bit 0 set) and monitors the SMBus data line for collisions (i.e. another device driving a “0” when this device is “driving” a “1.” Proceed to step 7 and wait for another SMBus packet.
25. The current target address is invalid so the device returns a value of FFh and monitors the SMBus data line for collisions. If the ARP Controller receives the FFh value it will know that the device requires address assignment. Proceed to step 7 and wait for another SMBus packet.

System Management Bus (SMBus) Specification Version 3.2

26. Is this a directed “Reset Device” command? If so then proceed to step 15. Otherwise proceed to step 27.
27. Is this the “Directed Get UDID” command? If so, then proceed to step 29. Return the UDID information. If not, then proceed to step 28.
28. The device has not received a valid command so it must handle the illegal command in accordance with SMBus rules for error handling. Proceed to 7 and wait for another SMBus packet.
29. Return the UDID information and current target address, then proceed to 7 and wait for another SMBus packet.

The flow diagram does not cover consideration for bus timeout mechanisms. These should be implemented in order to comply with the bus timing specifications. If the device supports the “Notify ARP Controller” command it may wish to consider implementing a timeout mechanism. This mechanism could cause the device to re-issue the “Notify ARP Controller” command if the ARP Controller doesn’t respond within a particular time period.

The device decodes the two internal flags as described in the following table:

Table 12: Device decodes of AV and AR flags

Address Resolved (AR Flag)	Address Valid (AV Flag)	Meaning
Cleared	Cleared	The device does not have a valid target address and will participate in the ARP process. This is the POR state for a device that doesn’t support the PTA or if it does it has not previously been assigned a target address.
Set	Cleared	Illegal state!
Cleared	Set	The device has a valid target address but must still participate in the ARP process.
Set	Set	The device has a valid target address that has been resolved by the ARP Controller. The device will not respond to the “General Get UDID” command. However, it could subsequently receive an “Assign Address” command and would change its target address accordingly.

System Management Bus (SMBus) Specification Version 3.2

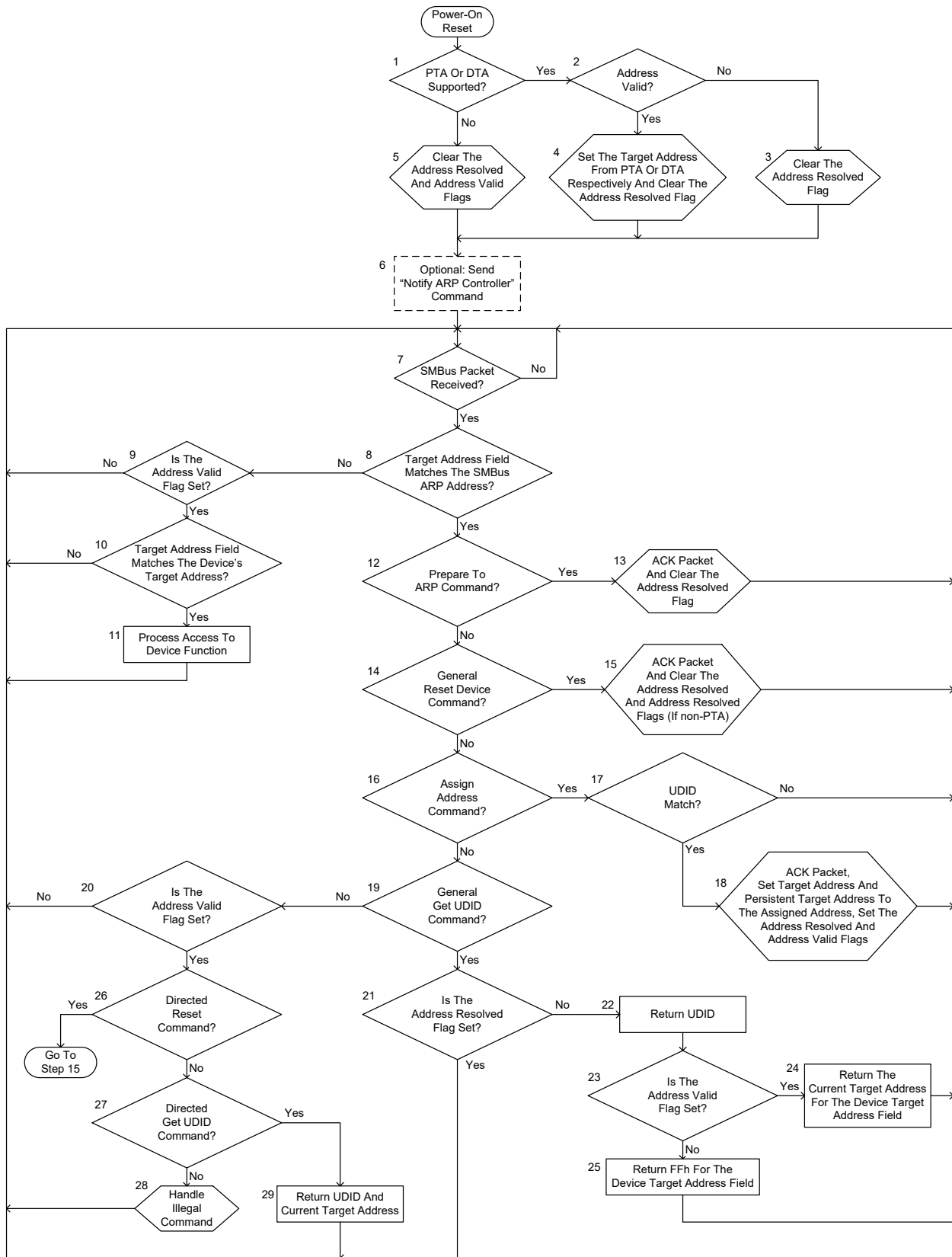


Figure 62: ARP-capable device behavior

System Management Bus (SMBus) Specification Version 3.2

6.6.3.13 Enumeration rules

Any device may enumerate the bus provided that the device is intelligent and capable of doing so. Additionally, the enumerating device must provide “snooping” capabilities to guarantee that multiple devices aren’t enumerating/ARPing at the same time. An enumerator must adhere to the following rules:

1. If an enumerator sees a “Prepare to ARP” or “Get UDID” command it must immediately stop enumerating.
2. An enumerator must monitor the bus for ARP commands for at least 2 seconds before beginning the enumeration process with the “Prepare to ARP” command.
3. If an enumerator sees an unassigned address then it must issue a Host Notify command and stop enumerating.

6.6.3.14 Example scenarios

The ARP can be illustrated by the following examples. Note that the UDID values are simple examples for illustrative purposes. They do not necessarily represent legal values.

Example 1

In this scenario assume the following:

- The ARP Controller has already exited its reset state and has run the ARP. The Used Address Pool does NOT contain the values 1001 000b, 1001 001b, ... , 1001 111b.
- New Device A has a UDID of 8123 4567 89AB CDEF 0000 0000 0000 0000h, does support the Persistent Target Address and was previously assigned the target address 1001 001. Its Address Valid flag is set but its Address Resolved flag is cleared.
- New Device B has a UDID of F123 4567 89AB CDE0 0000 0000 0000 0000h and does not support the Persistent Target Address. Its Address Valid and Address Resolved flags are cleared.
- New Device C has a UDID of F123 4567 89AB CDE1 0000 0000 0000 0000h and does not support the Persistent Target Address. Its Address Valid and Address Resolved flags are cleared.
- All devices exit their power on reset state at the same time.

The ARP will proceed as follows:

1. When the devices exit their power on reset state they will optionally attempt to issue the “Notify ARP Controller” command. Assume for this example that all three devices do so.
2. All devices will transmit all bytes of the “Notify ARP Controller” command without collision.
3. The ARP Controller having received the “Notify ARP Controller” command will issue the “Get UDID” command.
4. After detecting the repeat Start condition and receiving the SMBus Device Default Address with the R/W# bit set the devices will transmit the byte count for this command without collision. The devices will then begin to transmit their UDIDs as follows:

System Management Bus (SMBus) Specification Version 3.2

Device A: 1000...	1	0	
Device B: 1111...	1	1	
Device C: 1111...	1	1	
Seen on the bus:	1	0	Device A wins the bus arbitration

Device A wins the bus arbitration since it is transmitting a “0” as the 2nd MSB in the most significant byte of the UDID whereas Devices B & C are transmitting “1.” As such Devices B & C will cease transmission of this packet. Device A will complete its transmission.

1. The ARP Controller will send the “Assign Address” command using Device A’s target address and UDID. Device A will then set its Address Resolved flag (the Address Valid flag was already set). Device A will no longer respond to the “Get UDID” command until it receives the “Prepare To ARP” or “Reset Device” commands or is power cycled.
2. The ARP Controller will add target address 1001 001 to the Used Address Pool since Device A acknowledged the packet.
3. The ARP Controller will issue the “Get UDID” command again.
4. Devices B & C having lost the previous arbitration will respond and will transmit the byte count for this command without collision.
5. The devices will begin to transmit their UDIDs. Since the UDIDs are equal through the first seven most significant bytes there will be no bus collisions. The eighth UDID byte will be transmitted as follows:

Device B: 1110 0000	1	1	1	0	0	0	0	0	
Device C: 1110 0001	1	1	1	0	0	0	0	1	
Seen on the bus:	1	1	1	0	0	0	0	0	Device B wins the bus arbitration

Device B wins the bus arbitration since it is transmitting a “0” as the last bit in the eighth byte of the UDID whereas Device C is transmitting “1.” As such Device C will cease transmission of this packet. Device B will complete its transmission by sending the remaining eight bytes of the UDID and an FFh for the Device Target Address field since its Address Valid bit is cleared.

1. Device B will await an assigned address since its Address Valid flag is cleared.
2. The ARP Controller recognizes that the returned target address field was FFh. It captures the returned UDID and selects an address (e.g. 1001 000b) not in the Used Address Pool and issues the “Assign Address” command.
3. All devices will monitor the “Assign Address” command looking for a UDID match. Since Device B will match its UDID it will acknowledge the packet and adopt the target address assigned by the ARP Controller. Device B will also set its internal Address Resolved and Address Valid flags and will no longer respond to the “Get UDID” command until it receives the “Prepare To ARP” or “Reset Device” commands or is power cycled.
4. The ARP Controller will add target address 1001 000b to the Used Address Pool since Device B acknowledged the packet.
5. The ARP Controller will issue the “Get UDID” command again.

System Management Bus (SMBus) Specification Version 3.2

6. Device C having lost the previous arbitration will respond and will transmit the byte count for this command without collision. Since it is now the only device responding all remaining bytes will be transmitted without collision.
7. Device C will await an assigned address since its Address Valid flag is cleared.
8. The ARP Controller recognizes that the returned target address field was FFh. It captures the returned UDID and selects an address (e.g. 1001 010b) not in the Used Address Pool and issues the “Assign Address” command.
9. All devices will monitor the “Assign Address” command looking for a UDID match. Since Device C will match its UDID it will acknowledge the packet and adopt the target address assigned by the ARP Controller. Device C will also set its internal Address Resolved and Address Valid flags and will no longer respond to the “Get UDID” command until it receives the “Prepare To ARP” or “Reset Device” commands or is power cycled.
10. The ARP Controller will add target address 1001 010b to the Used Address Pool since Device C acknowledged the packet.
11. The ARP Controller will issue the “Get UDID” command again.
12. Since all three devices have their internal Address Resolved flag set they will not respond.
13. The ARP Controller will detect that no device has acknowledged the packet and will terminate the ARP.

Example 2

In this scenario assume the following:

- The system is in the S5 state.
- The system does not contain any devices with target address values 1001 000b, 1001 001b, ... , 1001 111b.
- Device A has a UDID of 0123 4567 89AB CDEF 0000 0000 0000 0000h, does support the Persistent Target Address and was previously assigned the target address 1001 001b. Device A was present in the system before it entered the S5 state. Its Address Valid flag is set but its Address Resolved flag is cleared.
- New Device B has a UDID of FEDC BA98 7654 3210 0000 0000 0000 0000h, does support the Persistent Target Address and was previously assigned the target address 1001 001b when present in another system. Device B was added to the system while it was in the S5 state. Its Address Valid flag is set but its Address Resolved flag is cleared.
- Both devices exit their power on reset state at the same time.

The ARP will proceed as follows:

1. The system transitions to the S0 state (assume the user pressed the power button).
2. The ARP Controller will exit the reset state and will initialize its Used Address Pool.
3. When the devices exit their power on reset state they may attempt to issue the “Notify ARP Controller” command; assume that they do for this example. The ARP Controller will attempt to issue the “Prepare To ARP” command.

System Management Bus (SMBus) Specification Version 3.2

4. If the ARP Controller receives the “Notify ARP Controller” command before it can issue the “Prepare To ARP” command it will simply ignore it.
5. The ARP Controller will issue the “Get UDID” command since presumably the “Prepare To ARP” command was acknowledged.
6. After detecting the repeat Start condition and receiving the SMBus Device Default Address with the R/W# bit set the devices will transmit the byte count for this command without collision.
7. The devices will begin to transmit the most significant byte of their UDID as follows:

Device A: 0000 0001	0
Device B: 1111 1110	1
Seen on the bus:	0 Device A wins the bus arbitration

Device A wins the bus arbitration since it is transmitting a “0” as the MSB in the most significant byte of the UDID whereas Device B is transmitting “1.” As such Device B will cease transmission of this packet. Device A will complete its transmission.

8. The ARP Controller will send the “Assign Address” command using Device A’s target address and UDID. Device A will then set its Address Resolved flag (the Address Valid flag was already set). Device A will no longer respond to the “Get UDID” command until it receives the “Prepare To ARP” or “Reset Device” commands or is power cycled.
9. The ARP Controller will add target address 1001 001b to the Used Address Pool since Device A acknowledged the packet.
10. The ARP Controller will issue the “Get UDID” command again.
11. Device B having lost the previous arbitration will respond and will transmit the byte count for this command without collision. Since it is now the only device responding all remaining bytes will be transmitted without collision.
12. The ARP Controller recognizes that the returned target address was already in the Used Address Pool. It captures the returned UDID and selects an address (e.g. 1001 000b) not in the Used Address Pool and issues the “Assign Address” command.
13. All devices will monitor the “Assign Address” command looking for a UDID match. Since Device B will match its UDID it will acknowledge the packet and adopt the new target address assigned by the ARP Controller. Device B will keep its internal Address Valid flag set and will set its Address Resolved flag so that it will no longer respond to the “Get UDID” command until it receives the “Prepare To ARP” or “Reset Device” commands or is power cycled.
14. The ARP Controller will add target address 1001 000b to the Used Address Pool since Device B acknowledged the packet.
15. The ARP Controller will issue the “Get UDID” command again.
16. Since both devices have their internal Address Resolved flag set they will not respond.
17. The ARP Controller will detect that no device has acknowledged the packet and will terminate the ARP.

Appendix A. Optional SMBus signals

A.1 SMBSUS#

An optional third signal, SMBSUS#, goes low when the system enters the Suspend Mode. Suspend Mode refers to a low power mode where most devices are stalled or powered down. Upon resume, the SMBSUS# returns high. The system then returns all devices to their operational state.

The SMBSUS# signal is included for clarity and completeness since many of the functions served by the System Management Bus relate to suspend and resume of the system.

The system can use the SMBCLK and SMBDAT lines to program device behavior. During normal operating mode the system may issue configuration commands to different devices. Those commands may tell the device how it is supposed to behave whenever the SMBSUS# line goes active. For example, the system might tell a power plane switcher to turn off power to the hard drive but keep the keyboard controller on when the system goes into suspend mode.

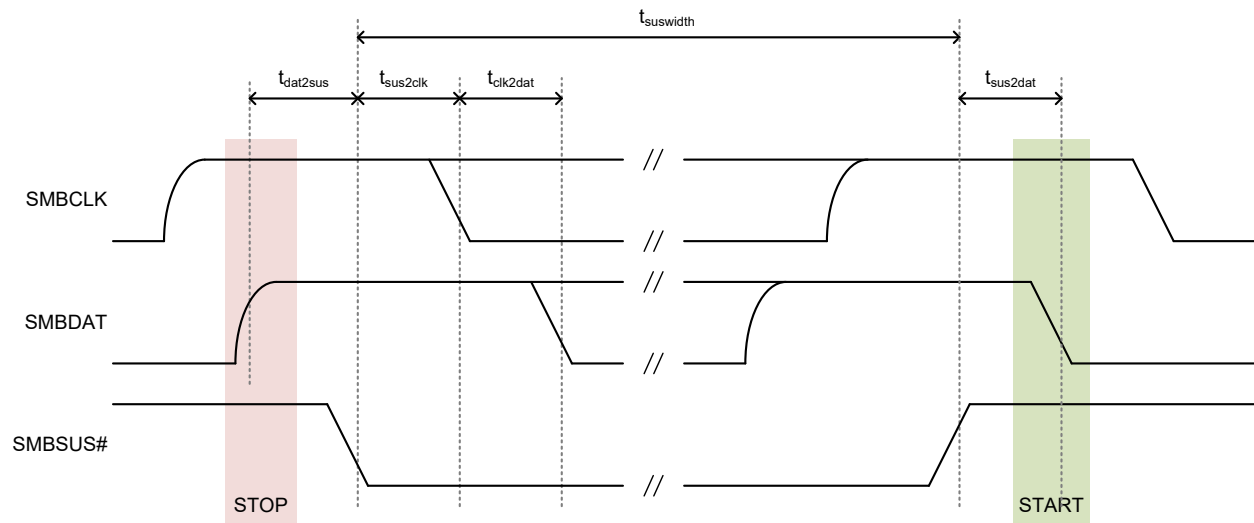


Figure 63: SMBus during suspend

Table 13: SMBus Suspend parameters

Timing	Min	Typical
$t_{DAT2SUS}$	0 ns	tens of ms
$t_{SUS2CLK}$	0 ns	tens of ns
$t_{CLK2DAT}$	0 ns	0ns
$t_{SUSWIDTH}$		minutes, hours, weeks
$t_{SUS2DAT}$	0 ns	hundreds of ms

SMBSUS# is not a wired-OR signal. It is an output from the device that controls system management functions, and an input to everything else.

During suspend there is no activity on the System Management Bus unless the SMBus is used to resume from suspend mode. Activity resumes after coming out of suspend.

System Management Bus (SMBus) Specification Version 3.2

Any time after a STOP condition the SMBSUS# signal may go active low signifying the system is going into Suspend Mode. This can happen immediately (min = 0 ns), but will probably take much longer. In fact, the final SMBus message might terminate minutes or hours before SMBSUS# goes low. Suspend Mode could last a couple of seconds, minutes, hours, or weeks. Before the System Management Bus can send another message the system must come out of Suspend Mode, a process known as Resume. The resume process probably has to supply voltage to the System Management Bus anyway, although the SMBus may be awake during suspend. The resume process can take a long time, perhaps hundreds of milliseconds. Careful power-down sequencing of the SMBCLK and SMBDAT pull-ups will prevent devices from falsely seeing a START condition on the bus.

If power is supplied to the System Management Bus during suspend, a device may use it to awaken the system. The controller or another device will watch for a START condition on the bus. That device initiates the resume sequence. Communication on the bus resumes when the system is out of the suspend state.

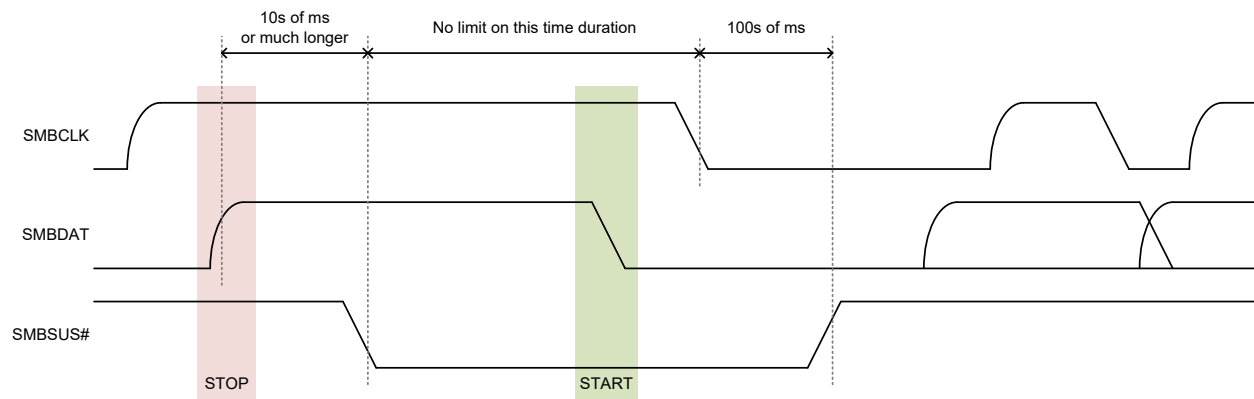


Figure 64: Using SMBus to Resume from Suspend

Since the SMBSUS# is an optional signal, some system devices may not know if the system is in suspend mode or not. Such a device may assume that if both SMBCLK and SMBDAT lines are high that the bus is alive and active. The possibility exists that this device may try to send a critical message to another device that accepts the SMBSUS# signal and is therefore asleep. Therefore it is important that a system is able to resume on a START condition if a non-suspendable controller resides on the System Management Bus and that controller can send critical messages to suspended devices.

A.2 SMBALERT#

Another optional signal is an interrupt line for devices that want to trade their ability to control the bus for a pin. SMBALERT# is a wired-AND signal just as the SMBCLK and SMBDAT signals are. SMBALERT# is used in conjunction with the SMBus Alert Response Address (ARA).

A target-only device can signal a controller through SMBALERT# that it wants to talk. The controller processes the interrupt and simultaneously accesses all SMBALERT# devices through the Alert Response Address. Only the device(s) which pulled SMBALERT# low will acknowledge the Alert Response Address. The controller performs a modified Receive Byte operation. The 7 bit device address provided by the target transmit device is placed in the 7 most significant bits of the byte. The eighth bit can be a zero or one.

System Management Bus (SMBus) Specification Version 3.2

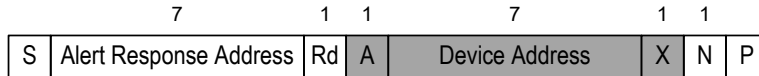


Figure 65: A 7-bit-Addressable Device responds to an ARA

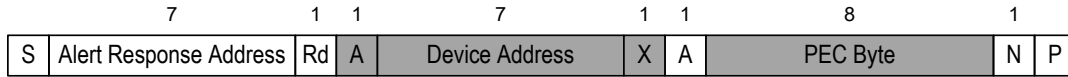


Figure 66: A 7-bit-Addressable Device responds to an ARA with PEC

If more than one device pulls SMBALERT# low, the highest priority (lowest address) device will win communication rights via standard arbitration during the target address transfer.

After receiving a NACK that signifies the end of a read transfer from the controller in response to its address, that device must stop pulling down on the SMBALERT# signal. If the controller still sees SMBALERT# low when the message transfer is complete, it knows to read the ARA again.

A controller which does not implement the SMBALERT# signal may periodically access the ARA.

Appendix B. Differences between SMBus and I²C

The SMBus and I²C bus are very similar and are generally interoperable. However, there are several differences with which a system engineer should be familiar. This section describes several of differences and includes tables that provide a summary of the key differences.

B.1 V_{DD} And Threshold Voltage Differences

The I²C specification [R01] gives minimum or maximum values for the supply voltage, V_{DD} , of devices attached to an I²C bus. In one section it even discusses devices with supply voltages of 12 V. In contrast, SMBus V3.0 restricts the nominal supply voltages of devices attached to a SMBus to a minimum of 1.8 V and a maximum of 5 V (Section 4.3.4).

The I²C and SMBus specifications also specify the logic input threshold voltages, V_{IL} and V_{IH} , differently. The I²C specification requires that V_{IL} be 30% of V_{DD} and that V_{IH} be 70% of V_{DD} . The SMBus V3.0 specification has fixed thresholds. V_{IL} is set to 0.8 V and V_{IH} is set to 1.35 V (Section 4.3.4).

There are also differences in the low output voltage and current specifications. These differences are summarized in the tables below. The biggest difference is for the specifications for operation at 400 kHz. For operation at 400 kHz a pull-up current of at least 6 mA is needed to guarantee the rise time will meet specification in the worst case (lowest V_{DD} , highest bus capacitance, highest leakage current). The I²C specification allows the clock and data outputs to rise to 0.6 V while sinking 6 mA. This reduces the noise significantly and even to a negative value. With a V_{DD} of 1.8 V and V_{IL} equal to 30% of V_{DD} the maximum V_{IL} will be 0.54 V, which is less than the 0.6 V output low voltage.

To assure operation at 400 kHz without degrading the noise margin, the SMBus specification requires that the output low voltage be 400 mV or less when sinking 6 mA.

In general, even with the different specifications for the input logic voltage thresholds, I²C and SMBus devices will be interoperable over the supply voltages permitted by the SMBus specification.

B.2 Minimum Bus Speed And Maximum Clock Stretching

The I²C bus specification does not give a minimum clock frequency. The controller may hold the clock line low forever and that would be a valid condition on an I²C bus. In addition, the I²C specification permits a target device to hold the clock line low for an unlimited amount of time.

The SMBus specification does require a minimum operating frequency of 10 kHz (Table 2).

In addition to the minimum bus operating frequency, the SMBus specification also places limits on the maximum amount of time a controller may extend the clock low time within each byte of a message ($t_{LOW:CEXT}$). There is also a limit on the total time a target device may extend the clock low time within each message ($t_{LOW:TEXT}$).

A further SMBus restriction on the bus operation is a timeout, $t_{TIMEOUT}$, after which the bus is presumed hung and all devices attached to the bus must reset their I/O interface and make ready to receive a START condition (Section 4.2.5).

B.3 Address Acknowledge

The I²C specifications do not require that a device always acknowledge its own address. This can confuse a system controller. If a device does not acknowledge its own address how does the system controller know if it is because the device is busy, has failed, or has been removed?

System Management Bus (SMBus) Specification Version 3.2

To prevent this confusion, the SMBus specifications require that a SMBus device always acknowledge its own address. If a device that did acknowledge its address fails to do so the system controller then knows that the device has either failed or has been removed.

B.4 SMBus Protocols

The I²C specification specifies only how to move bytes from one device to another. The structure of messages and packets is left entirely to the device manufacturers.

The SMBus specification defines command oriented protocols that must be used when one SMBus device is communicating with another. Examples of these protocols are WRITE WORD (Section 6.5.4) or BLOCK READ (Section 6.5.7). Not all I²C devices will support all of the SMBus transaction protocols.

B.5 REPEATED START Condition

As part of the SMBus protocols for reading data from a device the controller generally uses a REPEATED START condition. See, for example, the READ WORD protocol in Section 6.5.5. REPEATED START conditions may not be understood by some I²C devices. An attempt to use a SMBus protocol with a repeated START condition to read data from an I²C device may yield unexpected results.

B.6 SMBus Low Power Version

For applications where power usage must be minimized, such as in battery operated systems, the SMBus specification has a Low Power class (Section 4.3.3). I²C does not have a similar specification.

B.7 Tables Of Differences

The following tables summarize key differences in the I²C and High Power SMBus specifications. These tables are offered as a convenient reference but do not include every parameter that might be of interest. System engineers intending to operate I²C and SMBus devices on the same physical bus are encouraged to compare the SMBus and I²C specifications in detail.

Table 14: Selected parameter differences between Standard-Mode I²C and 100 kHz Class SMBus

Symbol	Parameter	Std I ² C mode device		100 kHz Class SMBus device		Units	Comments
		Min	Max	Min	Max		
V _{DD}	Nominal bus voltage	–	–	1.8	5.0	V	
	Operating bus voltage	–	–	1.62	5.5	V	Nominal ±10%
V _{IL}	LOW level input voltage	–	–	–	0.8	V	Fixed input level
		-0.5	0.3·V _{DD}	–	–	V	V _{DD} related input level
V _{IH}	HIGH level input voltage	–	–	1.35	V _{DD}	V	Fixed input level
		0.7·V _{DD}	Note 1	–	–	V	V _{DD} related input level
V _{HYS}	Hysteresis voltage of Schmitt trigger inputs	–	–	0.08	–	V	

System Management Bus (SMBus) Specification Version 3.2

Symbol	Parameter	Std I ² C mode device		100 kHz Class SMBus device		Units	Comments
		Min	Max	Min	Max		
V _{OL}	LOW level output voltage	–	–	–	0.4	V	I _{OL} = -3 mA
		–	0.4	–	–		I _{OL} = -4 mA
I _{OL}	LOW level output current	-3	–	–	–	mA	V _{OL} = 0.4 V
I _{LEAK-BUS}	Input leakage per bus segment	–	–	-200	200	μA	
C _{PIN}	Capacitance for clock or data pin	–	10	–	–	pF	
C _{BUS}	Capacitive load per bus segment	–	400	–	–	pF	
f _{SMB} , f _{SCL}	Bus operating frequency	–	100	10	100	kHz	
t _{TIMEOUT}	Detect clock low timeout	–	–	25	35	ms	
t _{HIGH}	Clock high period	4.0	–	4.0	50	μs	
t _{LOW:TEXT}	Cumulative clock low extend time (target device)	–	–	–	25	ms	
t _{LOW:CEXT}	Cumulative clock low extend time (controller device)	–	–	–	10	ms	
t _{OF}	Output voltage fall time	–	250	–	–	ns	Note 2
t _F	Output voltage fall time	–	300	–	300 Note 3	ns	
t _{POR}	Time in which a device must be operational after power-on reset	–	–	–	500	ms	

Table 15: DC parameter differences between Fast-mode I²C and 400 kHz Class SMBus

Symbol	Parameter	Fast-mode Plus I ² C mode device		400 kHz Class SMBus device		Units	Comments
		Min	Max	Min	Max		
V _{DD}	Nominal bus voltage	–	–	1.8	5.0	V	
	Operating bus voltage	–	–	1.62	5.5	V	Nominal ±10%
V _{IL}	Fixed input level	–	–	–	0.8	V	
	V _{DD} related input level	-0.5	0.3 V _{DD}	–	–	V	
V _{IH}	Fixed input level	–	–	1.35	V _{DD}	V	
	V _{DD} related input level	0.7·V _{DD}	V _{DD,MAX} +0.5	–	–	V	

System Management Bus (SMBus) Specification Version 3.2

Symbol	Parameter	Fast-mode Plus I ² C mode device		400 kHz Class SMBus device		Units	Comments
		Min	Max	Min	Max		
V _{HYS}	Hysteresis voltage of Schmitt trigger inputs	0.05 × V _{DD}	–	0.08	–	V	
V _{OL}	LOW level output voltage	–	–	–	0.4	V	I _{OL} = -6 mA
		–	0.4	–	–	V	I _{OL} = -3 mA; V _{DD} > 2 V
		–	0.2 × V _{DD}	–	–	V	I _{OL} = -2 mA; V _{DD} ≤ 2 V
I _{OL}	LOW level output current	-3	–	–	–	mA	V _{OL} = 0.4 V
		-6	–	–	–	mA	V _{OL} = 0.6 V Note 4
I _{LEAK-BUS}		–	–	-200	200	µA	
f _{SMB} , f _{SCL}	Bus operating frequency	–	400	10	400	kHz	
t _{TIMEOUT}	Detect clock low timeout	–	–	25	35	ms	
t _{HIGH}	Clock high period	0.6	–	0.6	50	µs	
t _{LOW:TEXT}	Cumulative clock low extend time (target device)	–	–	–	25	ms	
t _{LOW:CEXT}	Cumulative clock low extend time (controller device)	–	–	–	10	ms	
t _{OF}	Output voltage fall time	20 × (V _{DD} /5.5 V)	250 Note 2	–	–	ns	
t _F	Output voltage fall time	20 × (V _{DD} /5.5 V)–	300 Note 2	–	300 Note 3	ns	
t _{POR}	Time in which a device must be operational after power-on reset	–	–	–	500	ms	

Table 16: DC parameter differences between Fast-mode Plus I²C and 1 MHz Class SMBus

Symbol	Parameter	Fast-mode Plus I ² C mode device		1 MHz Class SMBus device		Units	Comments
		Min	Max	Min	Max		
V _{DD}	Nominal bus voltage	–	–	1.8	5.0	V	
	Operating bus voltage	–	–	1.62	5.5	V	Nominal ±10%
V _{IL}	Fixed input level	–	–	–	0.8	V	

System Management Bus (SMBus) Specification Version 3.2

Symbol	Parameter	Fast-mode Plus I ² C mode device		1 MHz Class SMBus device		Units	Comments
		Min	Max	Min	Max		
	V _{DD} related input level	-0.5	0.3 V _{DD}	–	–	V	
V _{IH}	Fixed input level	–	–	1.35	V _{DD}	V	
	V _{DD} related input level	0.7·V _{DD}	V _{DD,MAX} +0.5	–	–	V	
V _{HYS}		0.05 × V _{DD}	-	0.08		V	
V _{OL}	LOW level output voltage	–	–	–	0.4	V	I _{OL} = -20 mA
		–	0.4	–	–	V	I _{OL} = -3 mA; V _{DD} > 2 V
		–	0.2 × V _{DD}	–	–	V	I _{OL} = -2 mA; V _{DD} ≤ 2 V
I _{OL}	LOW level output current	-20	–	–	–	mA	V _{OL} = 0.4 V
I _{LEAK-BUS}	Input leakage per bus segment	–	–	-200	200	μA	
C _{BUS}	Capacitive load per bus segment	–	550	–	400	pF	
f _{SMB} , f _{SCL}	Bus operating frequency	–	1000	10	1000	kHz	
t _{TIMEOUT}	Detect clock low timeout	–	–	25	35	ms	
t _{HIGH}	Clock high period	0.26	–	0.26	50	μs	
t _{LOW:TEXT}	Cumulative clock low extend time (target device)	–	–	–	25	ms	
t _{LOW:CEXT}	Cumulative clock low extend time (controller device)	–	–	–	10	ms	
t _{OF}	Output voltage fall time	20 × (V _{DD} /5.5 V)	120 Note 2	–	–	ns	
t _F	Output voltage fall time	20 × (V _{DD} /5.5 V)–	120 Note 2	–	120 Note 3	ns	
t _{POR}	Time in which a device must be operational after power-on reset	–	–	–	500	ms	

Note 1: The maximum input high voltage is the lesser of 5.5 V or V_{DD,MAX} + 0.5 V.

Note 2: The I²C specification has several specifications for the clock and data signal fall time. One specification, t_{OF}, is measured at the pins of the driving device. The other specification, t_F, is measured on the bus. For details, see the notes attached to Table 9 of the I²C specification.

System Management Bus (SMBus) Specification Version 3.2

Note 3: See Note 7 attached to Table 2 for the voltage limits used to measure rise and fall time.

Note 4: From the I²C specification: “In order to drive full bus load at 400 kHz, 6 mA I_{OL} is required at 0.6 V VOL. Parts not meeting this specification can still function, but not at 400 kHz and 400 pF.”

System Management Bus (SMBus) Specification Version 3.2

Appendix C. SMBus Device Address Assignments

Table 17 lists the pre-assigned and reserved SMBus device assignments.

Table 17: Reserved and pre-assigned SMBus addresses

Target Address Bits [7:1]	R/W# Bit [0]	Description	Specification
0000 000	0	General Call Address	I ² C-Bus Specification And User Manual [R01]
0000 000	1	START byte	I ² C-Bus Specification And User Manual [R01]
0000 001	X	CBUS address	I ² C-Bus Specification And User Manual [R01]
0000 010	X	Address reserved for different bus format	I ² C-Bus Specification And User Manual [R01]
0000 011	X	Reserved for future use	I ² C-Bus Specification And User Manual [R01]
0000 1XX	X	HS Mode Controller Code	I ² C-Bus Specification And User Manual [R01]
0001 000	X	SMBus Host	System Management Bus Specification V 1.1, December 1998
0001 001	X	Smart Battery Charger	Smart Battery Charger Specification V 1.1, December 1998
0001 010	X	Smart Battery Selector Smart Battery System Manager	Smart Battery Selector Specification V 1.1, December 1998 Smart Battery System Manager Specification V 1.0B, August 1999
0001 011	X	Smart Battery	Smart Battery Data Specification V 1.1, December 1998
0001 100	X	SMBus Alert Response Address	System Management Bus Specification V 1.1, December 1998
0101 000	1	PMBus™ ZONE READ	PMBus Power System Management Protocol Specification, Part I, Revision 1.3
0101 100	X	Reserved by previous versions of the SMBus specification for LCD Contrast Controller. This address may be reassigned in future versions of the SMBus specification.	
0101 101	X	Reserved by previous versions of the SMBus specification for CCFL Backlight Driver. This address may be reassigned in future versions of the SMBus specification.	

System Management Bus (SMBus) Specification Version 3.2

Target Address Bits [7:1]	R/W# Bit [0]	Description	Specification
0110 111	0	PMBus™ ZONE WRITE	PMBus Power System Management Protocol Specification, Part I, Revision 1.3
1000 0XX	X	Reserved by previous versions of the SMBus specification for PCMCIA Socket Controllers (4 addresses). These addresses may be reassigned in future versions of the SMBus specification.	
1000 100	X	Reserved by previous versions of the SMBus specification for (VGA) Graphics Controller. This address may be reassigned in future versions of the SMBus specification.	
1001 0XX	X	Prototype Addresses	System Management Bus Specification V2.0, August 3, 2000
1100 001	X	SMBus Device Default Address	System Management Bus Specification V2.0, August 3, 2000
1111 0XX	X	10-bit target addressing	
1111 1XX	X	Reserved for future use	

Appendix D. Change History

DISCLAIMER: The section is provided for reference only and for the convenience of the reader. No suggestion, statement or guarantee is made that the description of the changes listed below is sufficient to design a device compliant with this document.

D.1 Revision 3.2

The following is a list of the significant changes from Revision 3.1 to 3.2. Corrections of small spelling, typographic, or format errors are not listed here.

- Throughout the document “master” was replaced by “controller” and “slave” was replaced by “target”. This was an extensive change to the text and figures. Acronyms such as “DSA (Default Slave Address)” were updated as needed (e.g. to “DTA (Default Target Address)”). Where necessary the text was updated to accommodate this change, such as when “master” was used as a verb.
- Throughout the document the use of “host” has been made consistent with the definition of “Host” as a device that responds to the Host Notify Address. Generic references to “host” have been changed to “controller”.
- Section 2.4: Definition of SMBALERT# was updated to clarify what device is sending the SMBALERT# signal
- Section 2.5.3: Changed definitions for “Address” symbols to be more generic.
- Section 2.5.3: Symbol added for “Don’t Care” bit send to controller as part of the Host Notify protocol
- Section 2.5.3: Symbols added for Device Address used as part of Host Notify protocol (Figure 41) and as part of the response to a read to the Alert Response Address (ARA) (Figure 65 and Figure 66)
- Section 5.3.2. Additional text explaining Figure 16 added.
- Figure 16 was changed to better show the overlap of the START conditions from Device 1 and Device 2. The previous figure showed the START condition driven by Device 2 coming after the START condition from Device 1 was completed. This change was based on comments received on the email help line that the previous figure was confusing to some.
- Section 6.5.9: The text was updated to reflect that the Host Notify protocol can be used by a normally target device to any SMBus controller and not just those that are specifically SMBus Hosts as defined in Section 6.1.3. Figure 41 changed “SMB Host...” to “SMBus Host...”
- Section 6.6.1.3, Table 8: Added values for SMBus Version 3.1 and 3.2
- Section 6.6.3.7, Figure 59: Changed “Target Address” to “Address” to match the other ARP command diagrams. Changed the “8” over the Device Address block to “7”.
- Section 6.6.3.8 Figure 60: Minor text changes. Changed the addresses in Figure 60 to match the description in the text (“Target Address (0001 000b)” to “SMBus Host Address” and “Device Address (1100 001b)” to “Device Address”.
- Section 6.6.3.8 Figure 60: Changed all occurrences of indicating a hexadecimal number with a leading “0X” to a trailing “h” to be consistent with the rest of the document.
- Figure 61 and Figure 62: Changed all occurrences of indicating a hexadecimal number with a leading “0x” to a trailing “h” to be consistent with the rest of the document.
- Figure 65: “Address” changed to “Device Address” to be consistent with Figure 66.

System Management Bus (SMBus) Specification Version 3.2

- Appendix D.4.3, Data Hold Time, was rewritten.
- Section 6.6.3.12, Item 15: Text was changed from “make sure its Address Valid (if non-PSA or DSA) and Address Resolved flags are cleared” to “make sure its Address Valid and Address Resolved flags are set or cleared as shown in Table 9”
- Changed the text in Section A.2 from “After receiving an acknowledge (ACK) from the controller in response to its address, that device must stop pulling down on the SMBALERT# signal.” To “After receiving a NACK that signifies the end of a read transfer from the controller in response to target device address, that device must stop pulling down on the SMBALERT# signal.” This updates the text to match the description and diagrams as originally shown in SMBus 2.0.
- Several other minor corrections to the text as figures.

D.2 Changes In Revision 3.1

The following is a list of the significant changes from Revision 3.0 to 3.1. Corrections of small spelling, typographic, or format errors are not listed here.

- Table 2, Note 7: “0.15” was changed to “0.15 V”
- Figure 5, The high and low thresholds in Figure 5 have been changed to match the values in Note 7 of Table 2
- Figure 39, Corrected figure to remove improper STOP condition before REPEATED START condition
- Figure 40, Corrected figure to remove improper STOP condition before REPEATED START condition
- Figure 42, Corrected figure to add ACK after the initial R/W# bit
- Figure 43, Corrected figure to add ACK after the initial R/W# bit
- Figure 46, Corrected figure to add ACK after the initial R/W# bit
- Figure 47, Corrected figure to add ACK after the initial R/W# bit
- Figure 48, Corrected figure to add ACK after the initial R/W# bit
- Figure 49, Corrected figure to add ACK after the initial R/W# bit
- Figure 56, Corrected figure to change second and incorrect “UDIC Byte 6” to “UDID Byte 4”
- Figure 57, Corrected figure to change second and incorrect “UDIC Byte 6” to “UDID Byte 4”
- Figure 58, Corrected figure to change second and incorrect “UDIC Byte 6” to “UDID Byte 4”
- Revision Table, Added Robert Dunstan as editor of Revisions 1.0, 1.2, and 2.0
- Section 2.4, In the definition of reserved, “read at 0” is changed to “read as 0”
- Table 15, Change Maximum Bus Operating Frequency specification from incorrect 100 kHz to correct 400 KHz
- Appendix B.2, The text “maximum about of time” is changed to “maximum amount of time”

D.3 New In Revision 3.1: Default Target Address

In the Address Resolution Protocol (ARP) a new address type, “Default Target Address”, was added through the following changes.

- Section 2.4, Default Target Address Request: Added definition of “Default Target Address” as “A manufacturer-assigned, read-only target address that is loaded from ROM after the device power on.”

System Management Bus (SMBus) Specification Version 3.2

- Section 2.4, Default Target Address Request: Added definition of "DSA" as "Default Target Address"
- Table 9, Default Target Address Request: Update Table 9 to add a new device type, "DSA (Default Target Address)"
- Section 6.6.3.3, Default Target Address Request: Added text "The DSA devices must assume their Default Target Addresses and clear their AR flag."
- Section 6.6.3.3, Default Target Address Request: Changed text "AV Flag: if (non-PSA) then CLEAR; else NO CHANGE" to "AV Flag: if (non-PSA) then CLEAR; if (DSA) then SET; else NO CHANGE"
- Section 6.6.3.7, Default Target Address Request: Added text "The DSA devices must assume its Default Target Addresses and clear their AR flag."
- Section 6.6.3.7, Default Target Address Request: Changed text "AV Flag: if (non-PSA) then CLEAR; else NO CHANGE" to "AV Flag: if (non-PSA) then CLEAR; if (DSA) then SET; else NO CHANGE"
- Section 6.6.3.12, Step 1, Default Target Address Request: Changed text "After exiting the power on reset state, a device that supports the Persistent Target Address (PSA) will go to step 2 to see if it is valid. If the device does not support the PSA, it will proceed to step 5." to "After exiting the power on reset state, a device that supports the Persistent Target Address (PSA) or Default Target Address (DSA) will go to step 2 to see if it is valid. Otherwise, it will proceed to step 5."
- Section 6.6.3.12, Step 2, Default Target Address Request: Changed text "A device supporting PSA must check its Address Valid flag which is a nonvolatile. If that flag is set then it has previously received an assigned target address and proceeds to step 4. If the Address Valid flag is cleared then it must proceed to step 3" to "A device supporting PSA must check its Address Valid flag which is a nonvolatile. If that flag is set then it has a valid target address and proceeds to step 4. If the Address Valid flag is cleared then it must proceed to step 3."
- Section 6.6.3.12, Step 4, Default Target Address Request: Changed text "has a valid PSA" to "has a valid target address in NVR or ROM"
- Section 6.6.3.12, Step 15, Default Target Address Request: Changed text "(if non-PSA)" to "(if non PSA or DSA)"
- "Section 6.6.3.12, Step 18, Default Target Address Request: Added text ""DSA devices store address in volatile storage that is reset to Default Target Address after device power-on reset.""
- Figure 62, Step 1, Default Target Address Request: Changed text "Persistent Target Address Supported?" to "PSA or DSA Supported?"
- Figure 62, Step 2, Default Target Address Request: Changed text "Persistent Target Address Supported?" to "Address Valid?"
- Figure 62, Step 4, Default Target Address Request: Changed text "Set The Target Address To PSA And Clear The Address Resolved Flag" to "Set The Target Address From PSA Or DSA Respectively And Clear The Address Resolved Flag"

D.4 Changes From Revision 2.0 To Revision 3.0

A summary of the changes from Revision 2.0 to Revision 3.0 of the SMBus specification is given below. This is not an exact list of every change made between the two documents; rather, it is a summary of the changes deemed significant by the editor.

System Management Bus (SMBus) Specification Version 3.2

D.4.1 Maximum Bus Frequency

In SMBus 2.0, the maximum bus frequency was 100 kHz. In this revision, three classes of bus speeds are introduced with maximum bus frequencies of 100 kHz, 400 kHz, and 1 MHz (Section 4.2 and Table 2)

D.4.2 Electrical Drive Levels

The organization of the electrical drive levels was changed to accommodate the higher bus frequencies. The Low Power levels were retained (Table 3) but the High Power drive levels were updated to match the new higher operating frequencies (Table 4).

D.4.3 Data Hold Time

In both the SMBus and I²C specifications the Data Hold Time, $t_{HD:DAT}$, is the time from when the clock signal becomes low and to the time when the data signal starts to change. This is illustrated in Figure 67.

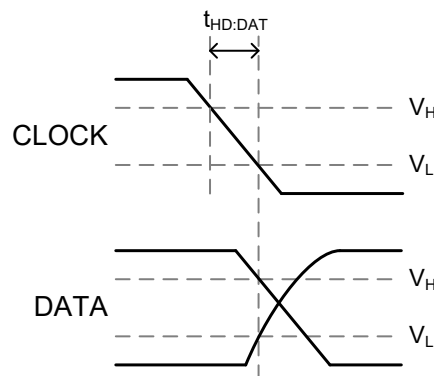


Figure 67: Data Hold Time

In SMBus Version 2.0 and previous revisions the data hold time was specified as a minimum of 300 ns. However, the I²C specification for the data hold time was 0 ns but with the note:

“A device must internally provide a hold time of at least 300 ns for the SDA signal (with respect to the $V_{IH}(\min)$ of the SCL signal) to bridge the undefined region of the falling edge of SCL.”

This meant that a device driving the data line had to assure that it did not start driving the data line unit at least 300 ns after the clock signal had become low.

With the note in the I²C specification for data hold time the specification for data hold time in the SMBus and I²C specifications were effectively the same. However, the difference in wording led to some confusion among device manufacturers and users. To eliminate this confusion the specification of the data hold time in SMBus 3.0 was changed to 0 ns match that of the I²C specification and a note similar to the note in the I²C was added.

D.4.4 T_{SPIKE} In Place Of V_{NOISE}

In Revision 2.0 of the SMBus specification, the High Power DC Specifications (Table 3) included the parameter V_{NOISE} which described a minimum immunity to noise on the clock and data lines. As best the PMBus/SMBus Specification Working Group could ascertain no supplier of SMBus devices or any system OEM using SMBus ever tested for compliance to this parameter. The Working Group decided to drop this parameter from the Revision 3.0 specification.

System Management Bus (SMBus) Specification Version 3.2

It was replaced by the t_{SPIKE} parameter (Table 2) which is based on a similar specification in the I²C specification. This brings the SMBus PHY specification more into line with the I²C specification simplifying design of the devices and systems.

D.4.5 Zone Read And Write Protocols

The addresses reserved for the ZONE READ and ZONE WRITE protocols, introduced in Revision 1.3 of the PMBus™ specification ([R06]) were added (Section Table 17).

D.4.6 255 Bytes in Process Call

The maximum number of bytes allowed in the Block Write-Block Read Process Call (Section 6.5.8) was increased from 32 to 255.

D.4.7 32 And 64 Bit Protocols

Protocols were added to read and write 32 and 64 bits of data in one transaction (Sections 6.5.10, 6.5.11, 6.5.12 and 6.5.13)

D.4.8 Reformatting Of Text, Figures, And Tables

The document was reformatted to match the formatting used in the PMBus specifications. The changes include reformatting of the text, redrawing and renumbering the figures, and reformatting and renumbering the tables.